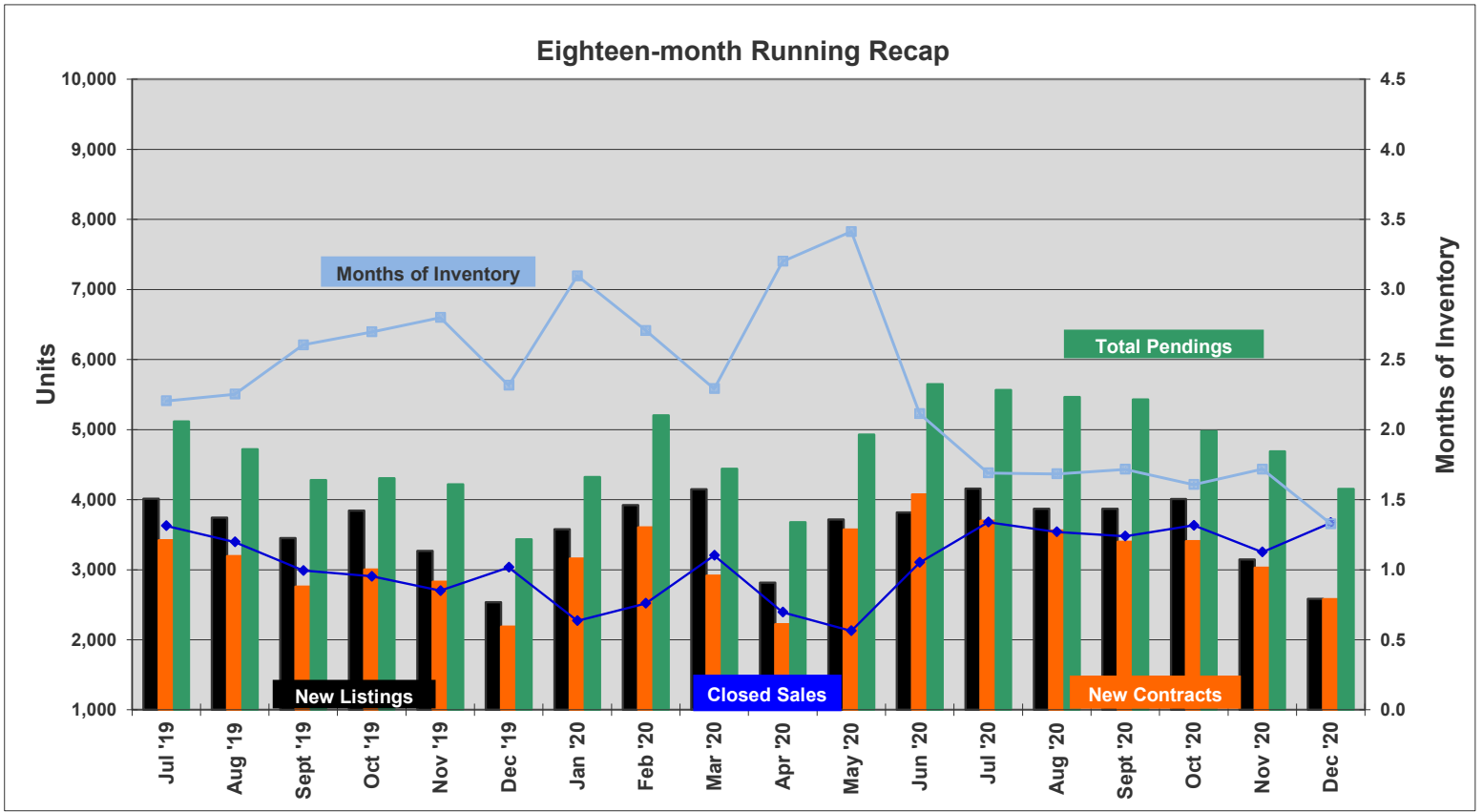
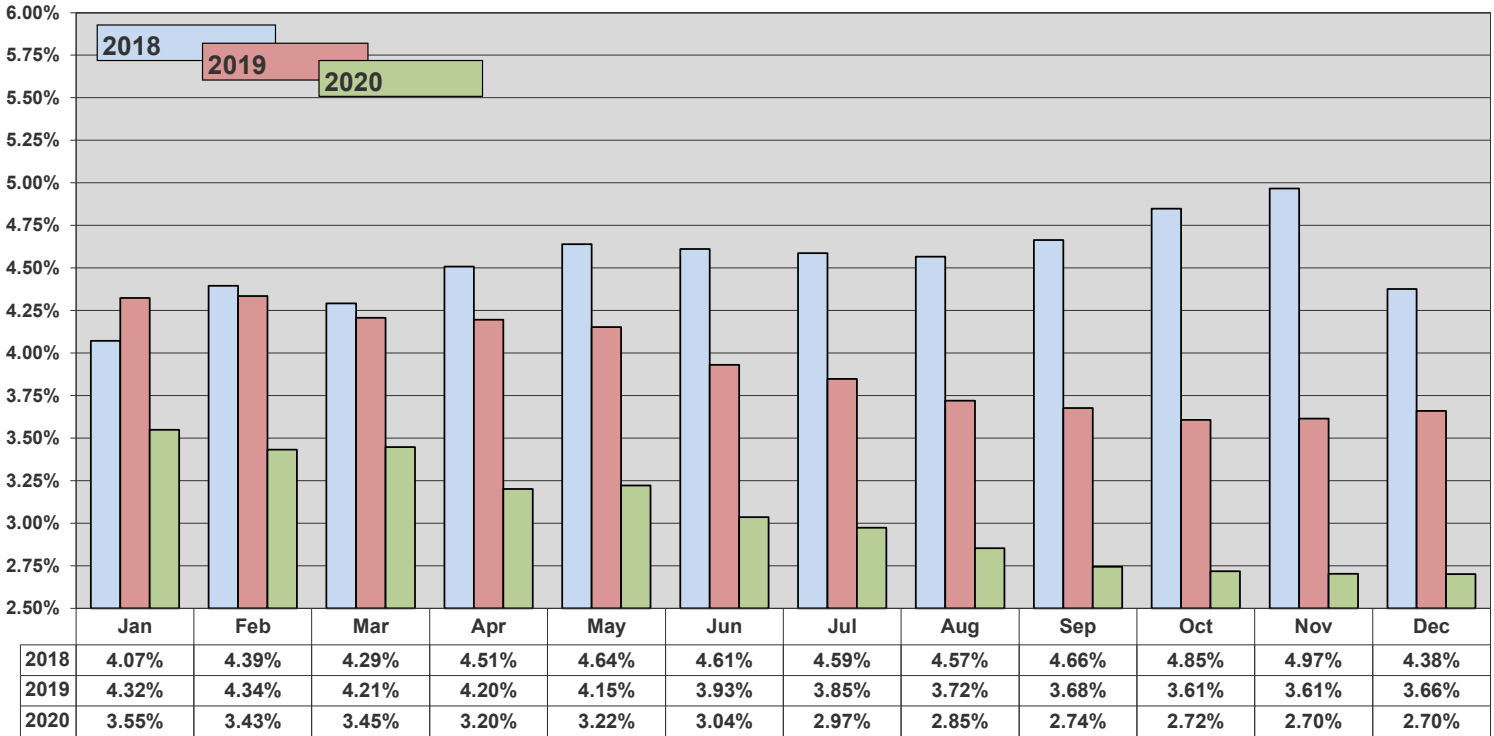
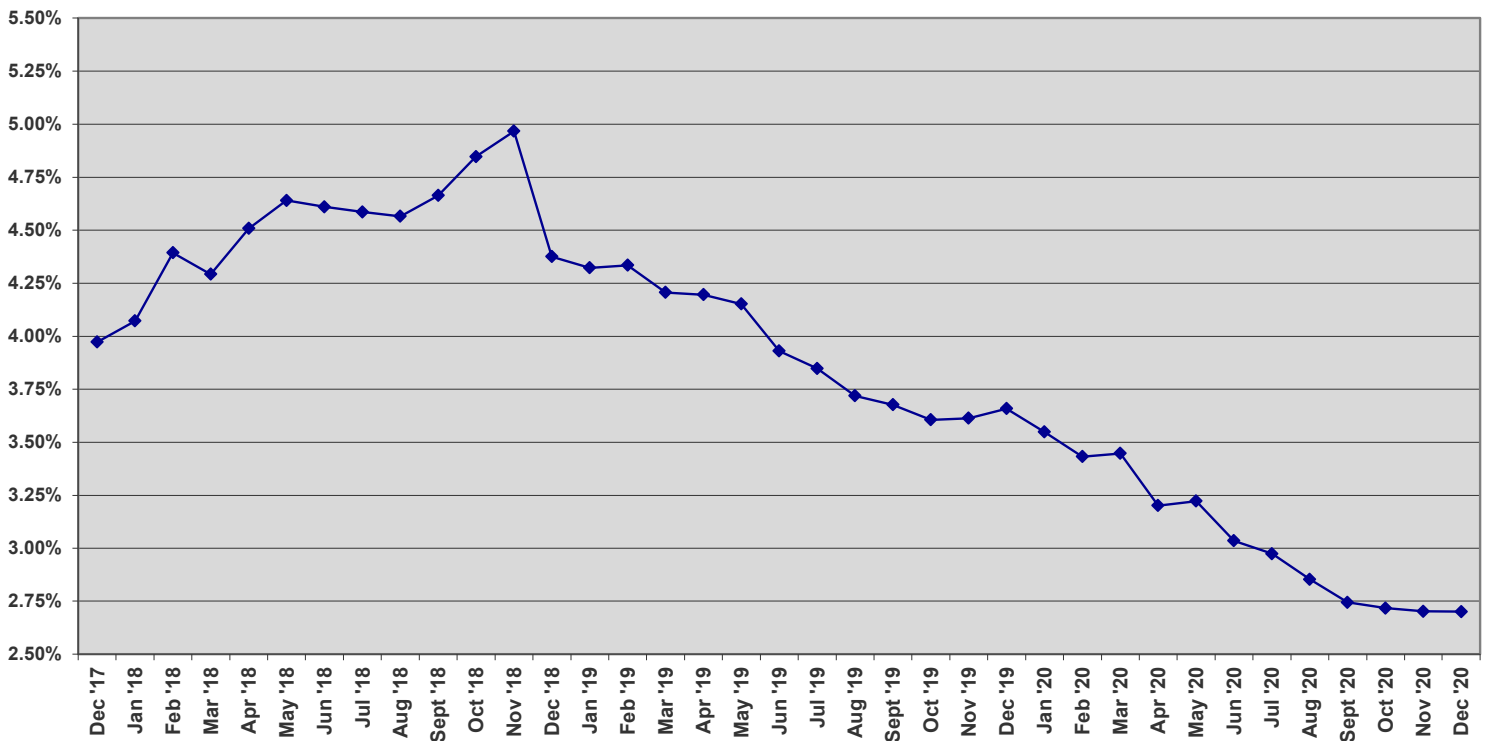


ORRA Originated Sales	Average Mtg Rate	Inventory				New Listings	New Contracts	Under Contract	Back on Market	Expired	Withdrawn	Sales Closed	Days on Market
		Total	Single Family Homes	Condos	Townhomes/Villas								
Jul '19	3.85%	7,998	6,265	1,115	618	4,012	3,421	5,118	779	218	809	3,628	49
Aug '19	3.72%	7,652	6,027	1,046	579	3,744	3,196	4,721	641	226	764	3,397	49
Sept '19	3.68%	7,784	6,102	1,049	633	3,453	2,757	4,282	654	223	749	2,989	51
Oct '19	3.61%	7,837	6,140	1,061	636	3,846	3,003	4,308	693	247	824	2,906	54
Nov '19	3.61%	7,562	5,922	1,020	620	3,268	2,830	4,217	569	229	760	2,701	54
<b>Dec '19</b>	<b>3.66%</b>	<b>7,023</b>	<b>5,426</b>	<b>1,010</b>	<b>587</b>	<b>2,538</b>	<b>2,188</b>	<b>3,434</b>	<b>488</b>	<b>431</b>	<b>633</b>	<b>3,033</b>	<b>53</b>
Jan '20	3.55%	7,030	5,394	1,040	596	3,579	3,159	4,324	586	176	726	2,270	60
Feb '20	3.43%	6,825	5,136	1,086	603	3,924	3,604	5,204	552	187	623	2,521	58
Mar '20	3.45%	7,341	5,499	1,162	680	4,150	2,914	4,439	953	136	743	3,204	54
Apr '20	3.20%	7,659	5,656	1,237	766	2,814	2,224	3,679	726	206	707	2,393	47
May '20	3.22%	7,260	5,207	1,264	789	3,717	3,572	4,930	683	230	644	2,127	48
Jun '20	3.04%	6,557	4,605	1,207	745	3,816	4,077	5,647	653	212	664	3,103	52
Jul '20	2.97%	6,220	4,219	1,242	759	4,156	3,702	5,564	568	202	698	3,679	54
Aug '20	2.85%	5,958	3,957	1,258	743	3,869	3,560	5,467	442	176	668	3,539	51
Sept '20	2.74%	5,972	3,986	1,240	746	3,870	3,400	5,429	548	190	597	3,478	48
Oct '20	2.72%	5,840	3,880	1,211	749	4,009	3,409	4,977	452	135	564	3,634	48
Nov '20	2.70%	5,583	3,592	1,261	730	3,145	3,031	4,688	414	116	517	3,251	44
<b>Dec '20</b>	<b>2.70%</b>	<b>4,875</b>	<b>3,113</b>	<b>1,132</b>	<b>630</b>	<b>2,584</b>	<b>2,582</b>	<b>4,153</b>	<b>433</b>	<b>281</b>	<b>150</b>	<b>3,672</b>	<b>45</b>
ORRA Originated Sales	Average Mtg Rate	Total	Single Family Homes	Condos	Townhomes/Villas	New Listings	New Contracts	Under Contract	Back on Market	Expired	Withdrawn	Sales Closed	Days on Market
<b>Inventory</b>													

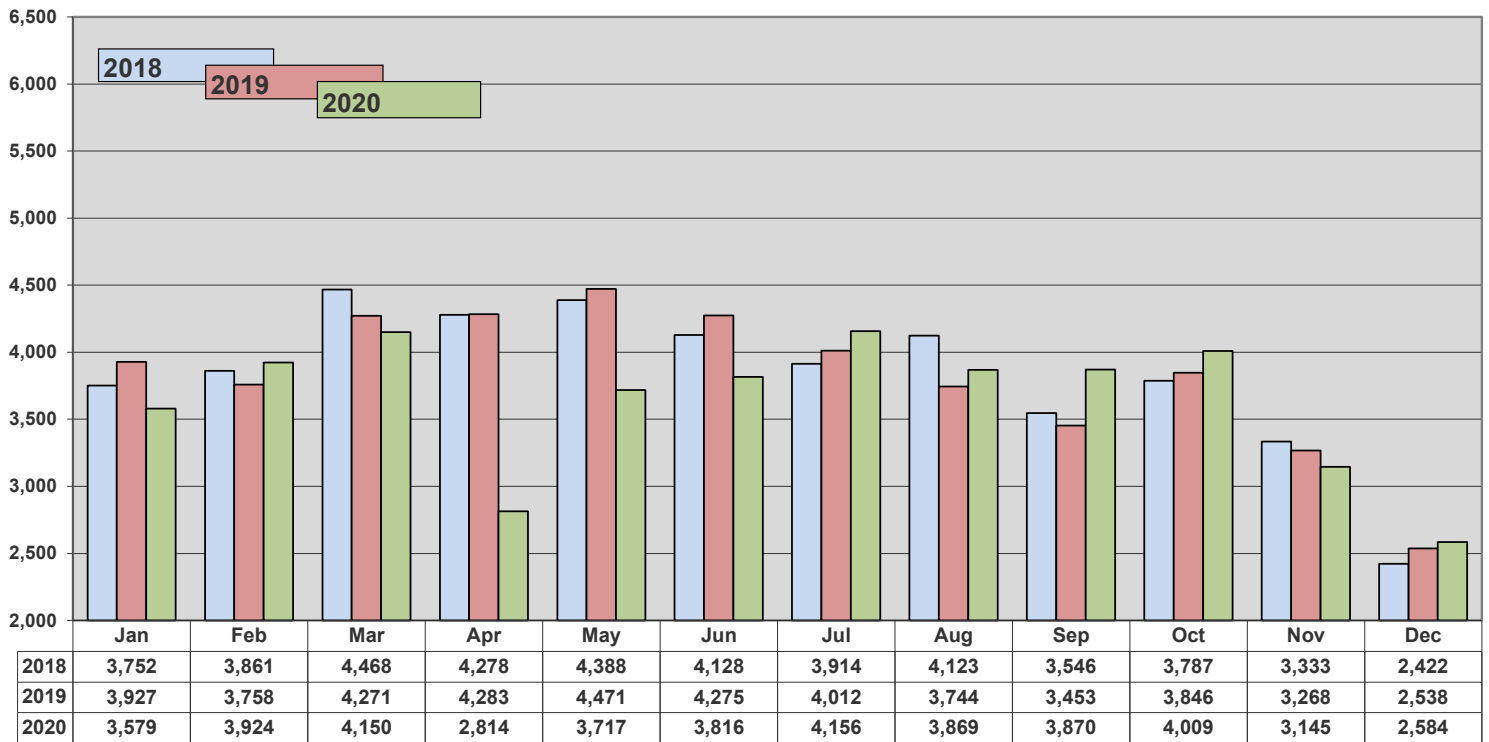
Complete stats and data may be found under Market Info at [www.orlandorealtors.org](http://www.orlandorealtors.org). Comments or suggestions? Contact Mike Blinn, Statistician.

Market Pulse™ data represents all listings taken or sold by ORRA brokers, regardless of location and is exclusive to residential property, which includes townhomes, duplexes, single-family homes, and condos. It does not include vacant land or commercial transactions.

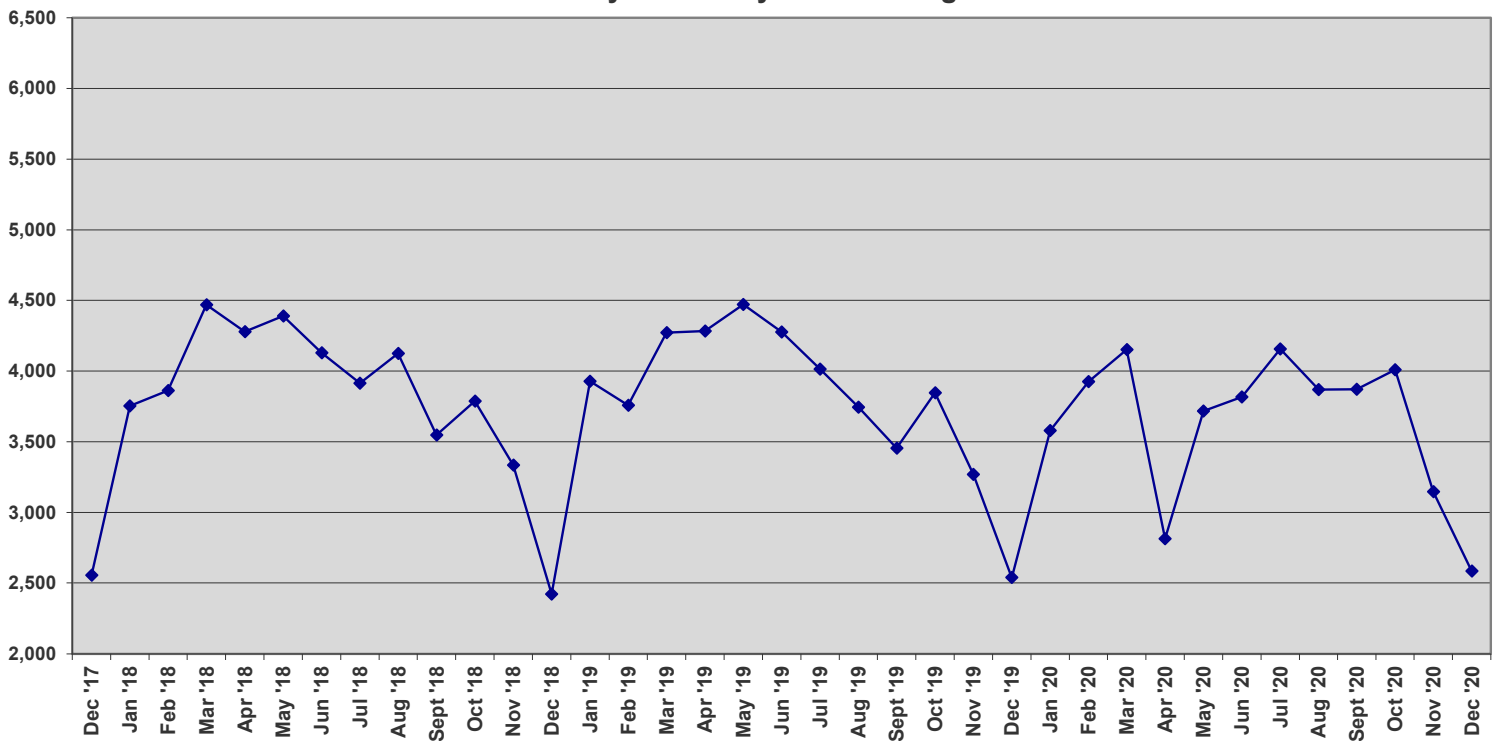


**Average Monthly Mortgage Rate**

**Three-year History - Average Monthly Mortgage Rate**


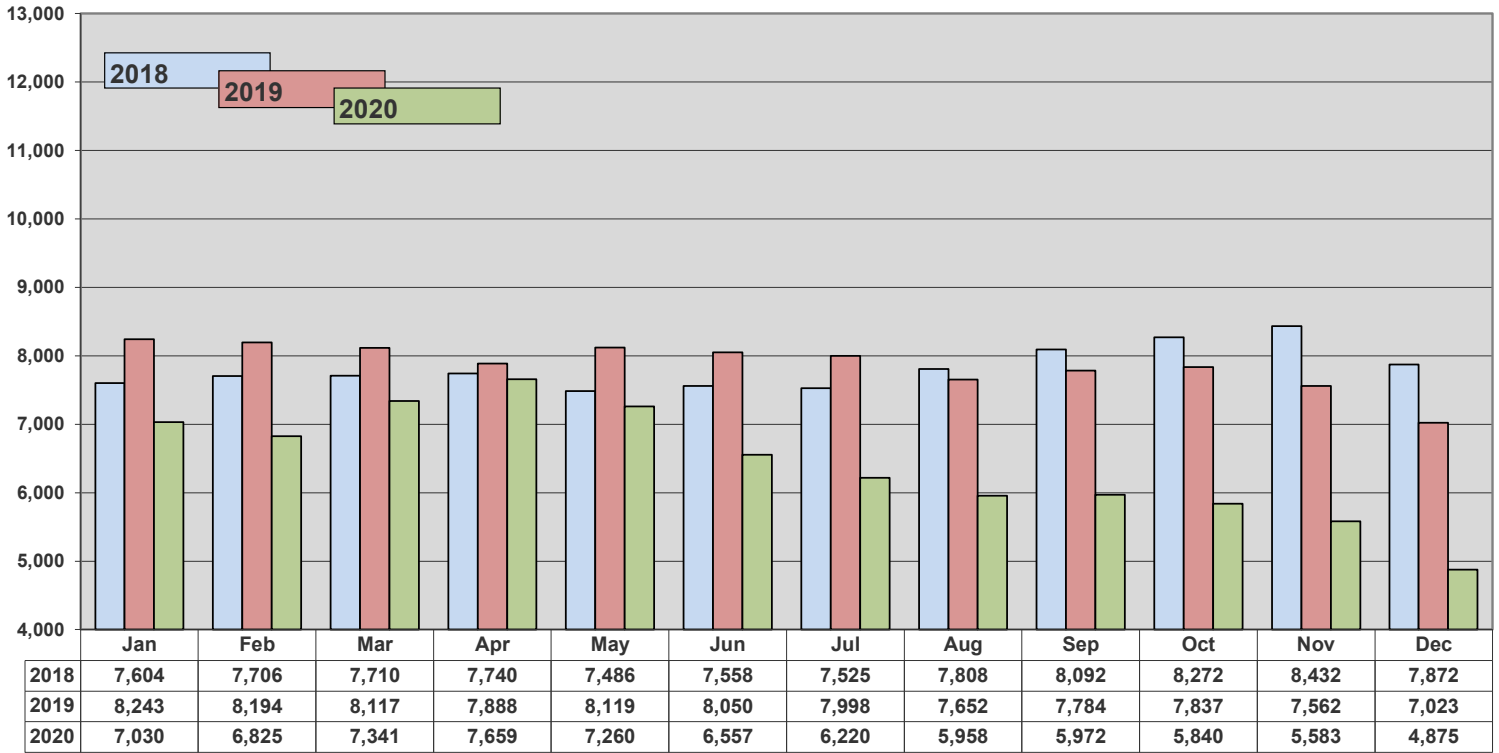
### New Listings



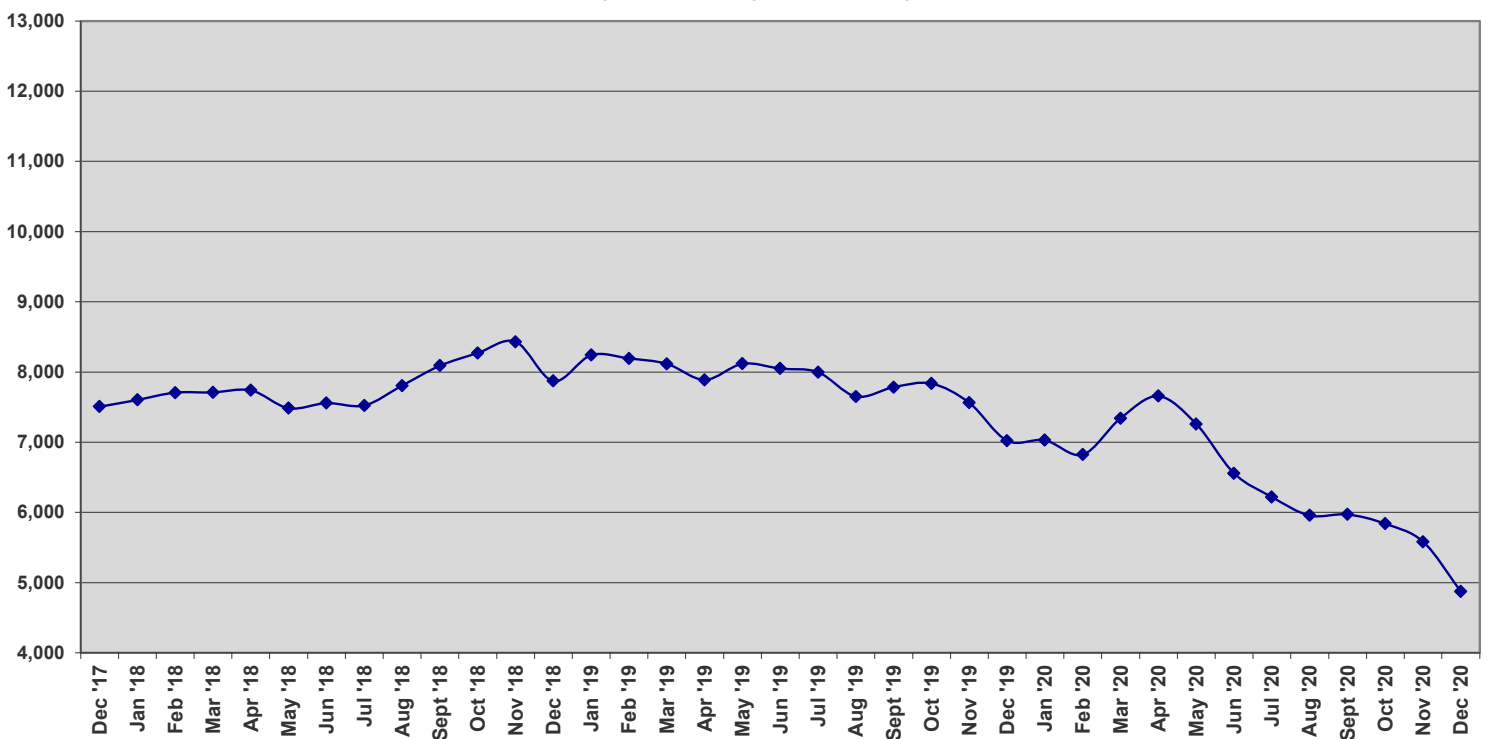
### Three-year History - New Listings



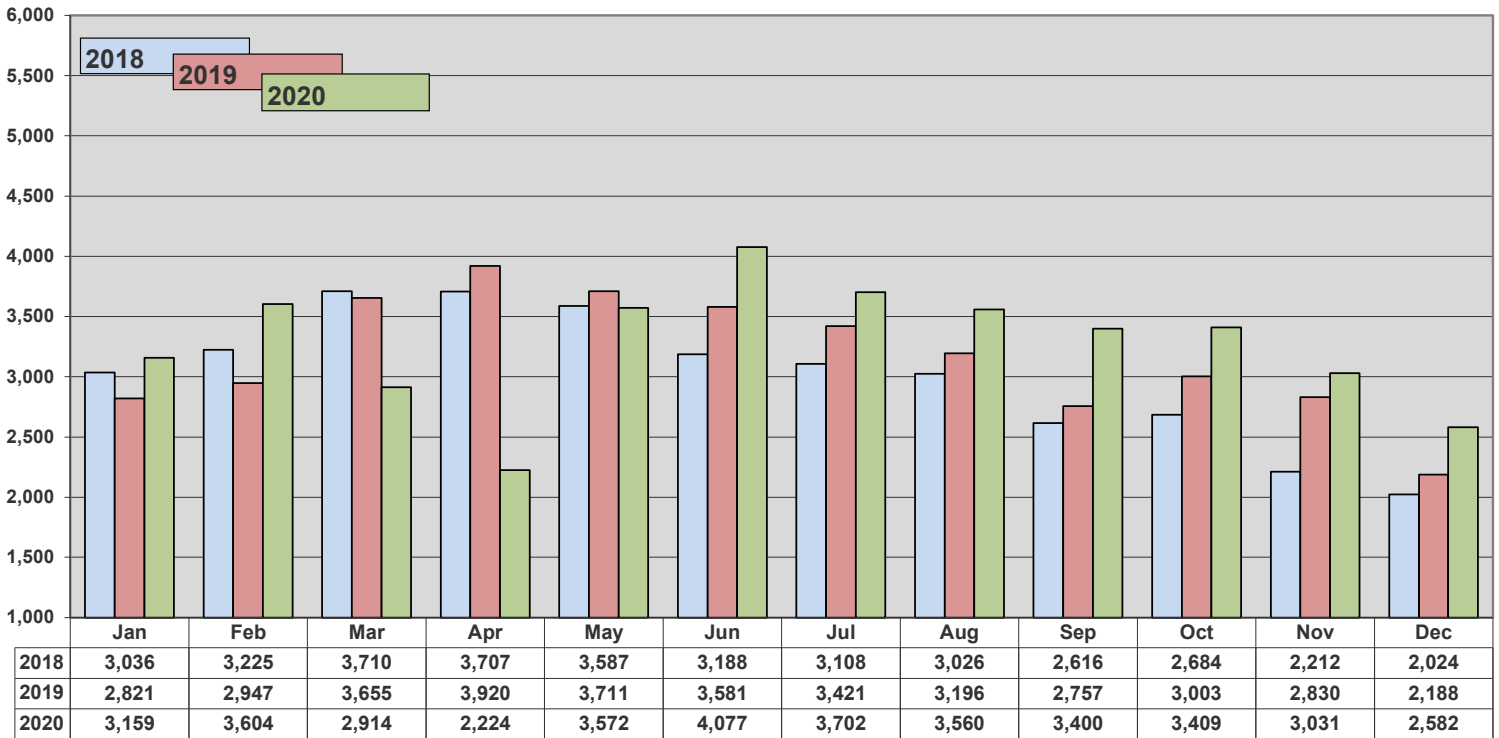
### Inventory



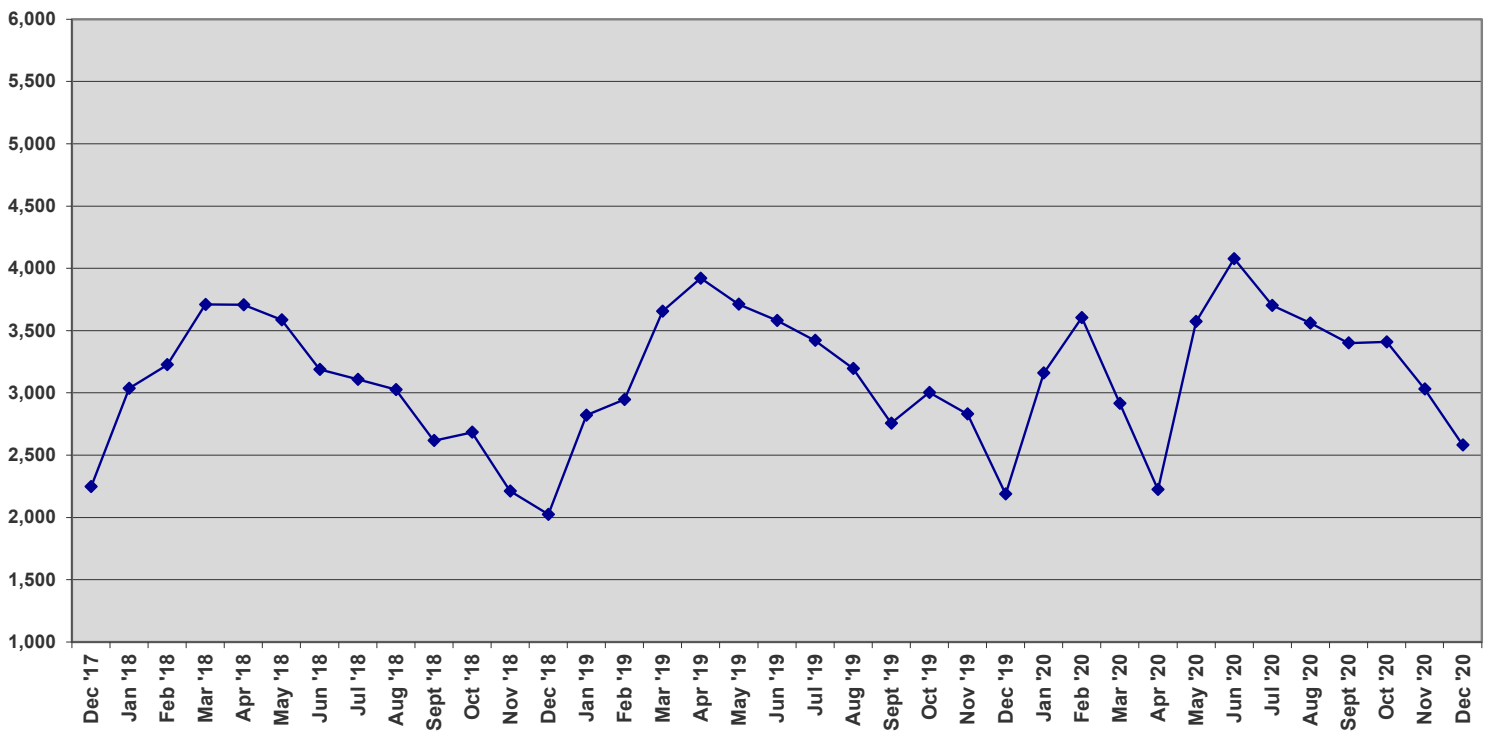
### Three-year History - Inventory

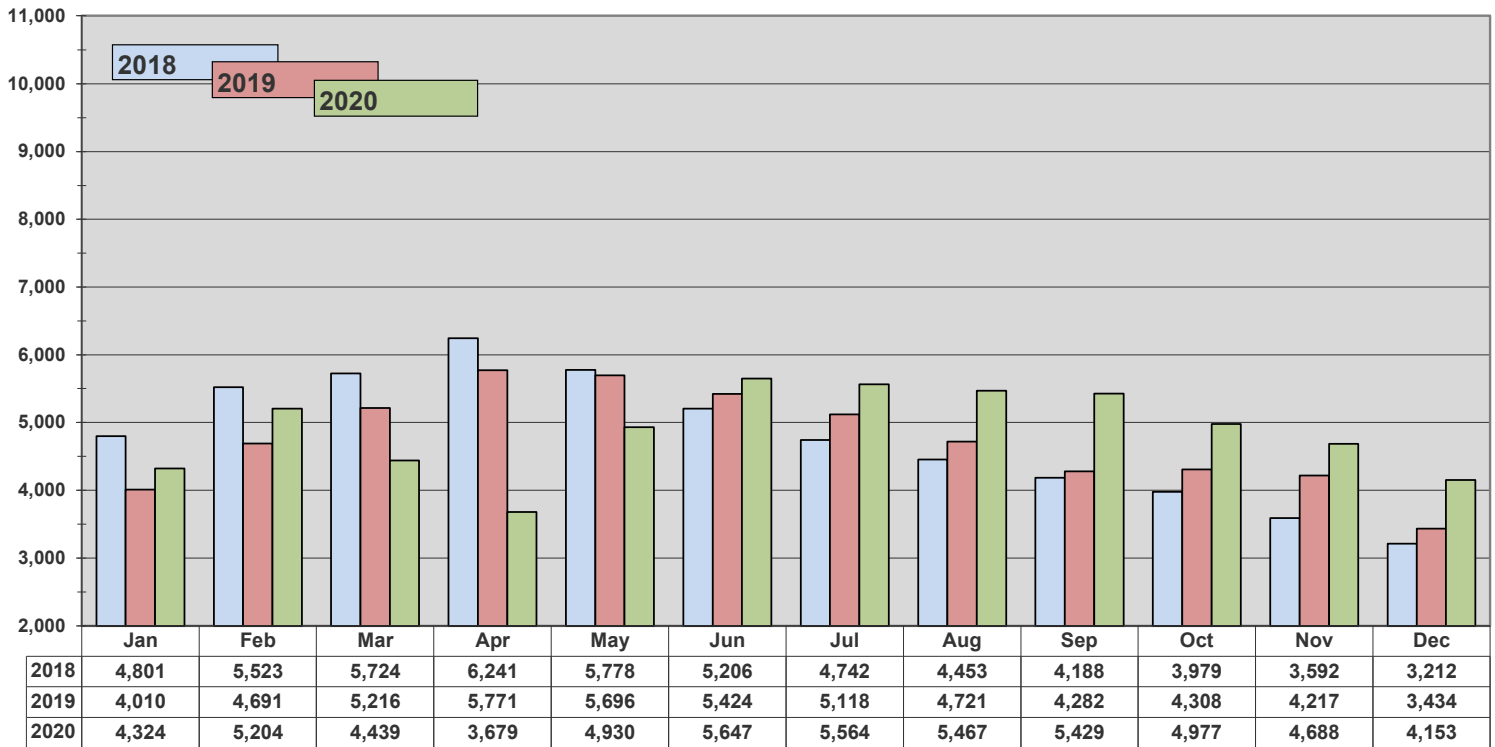
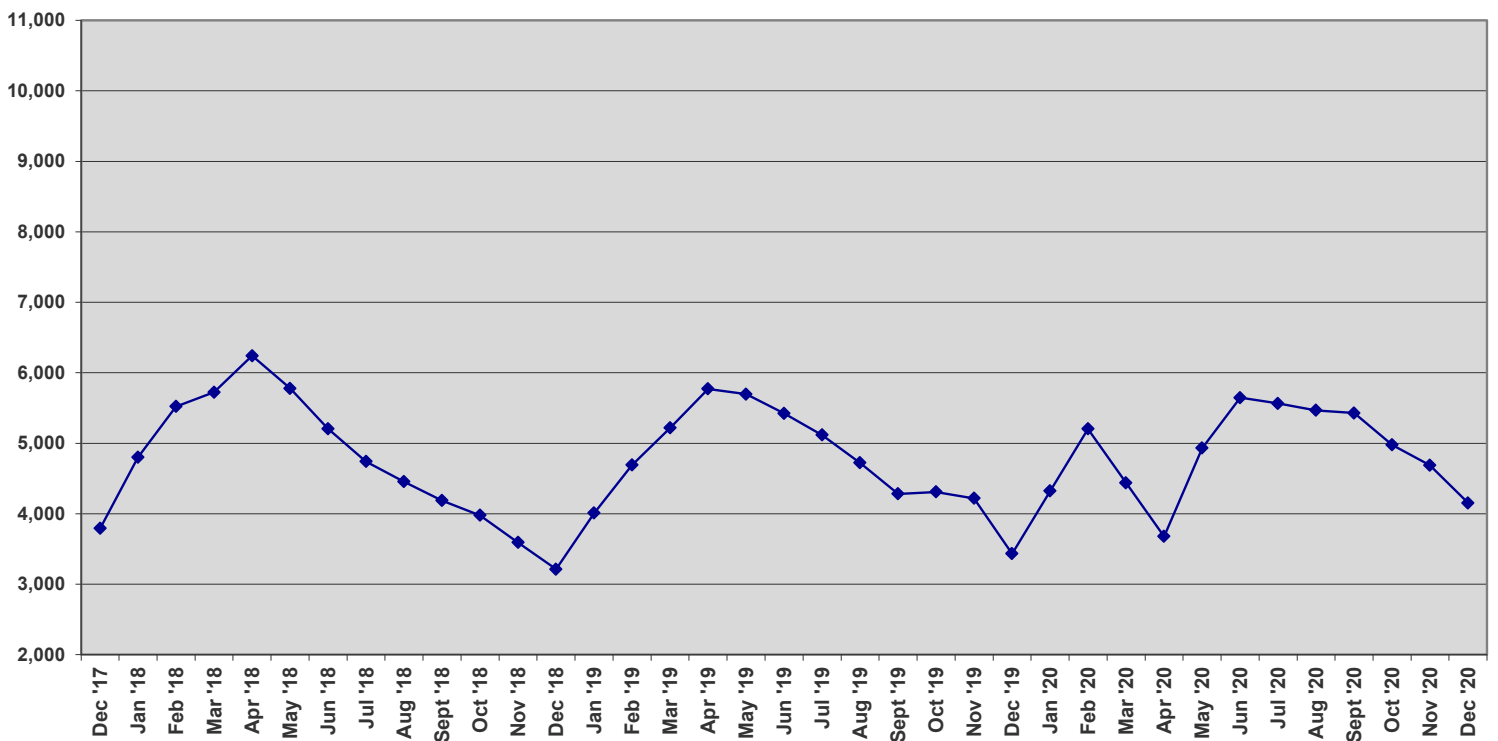


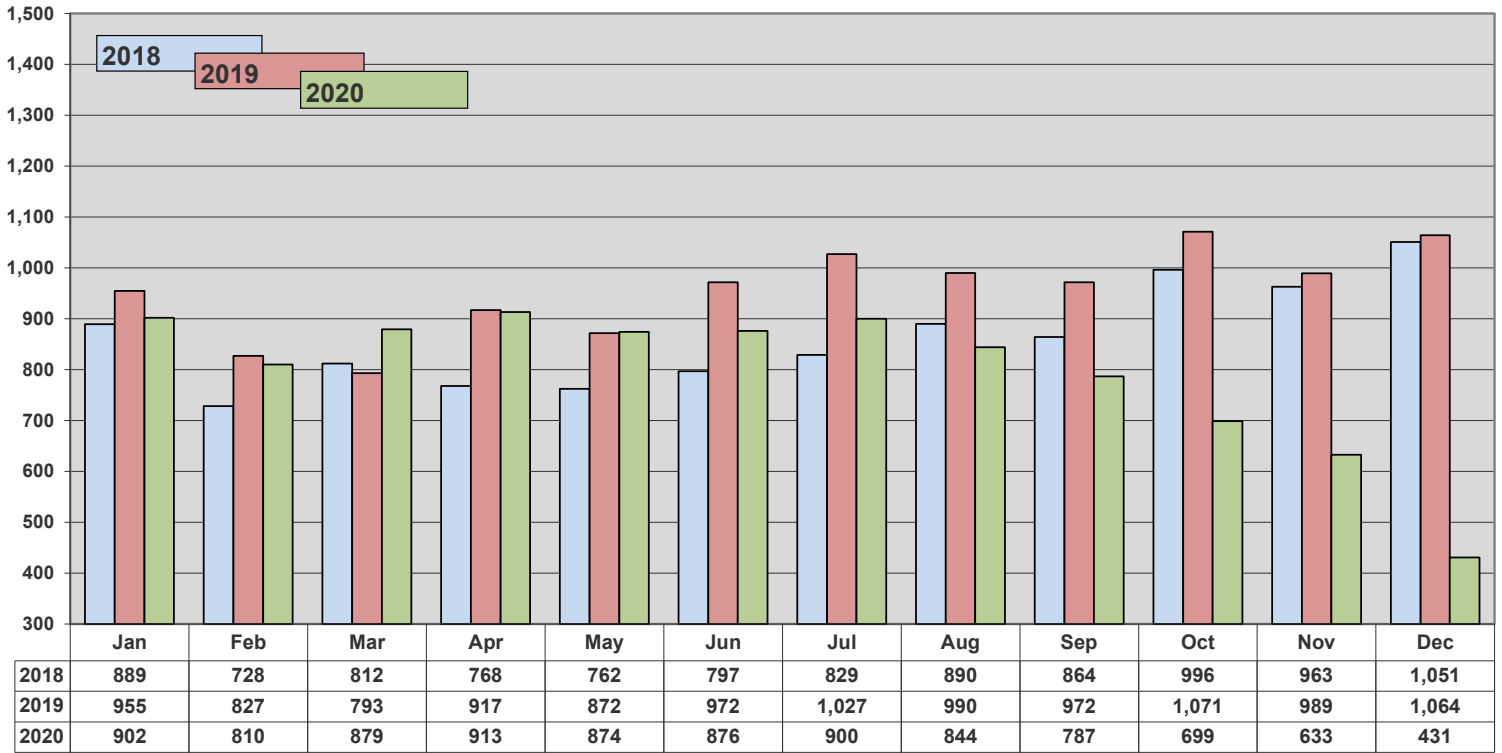
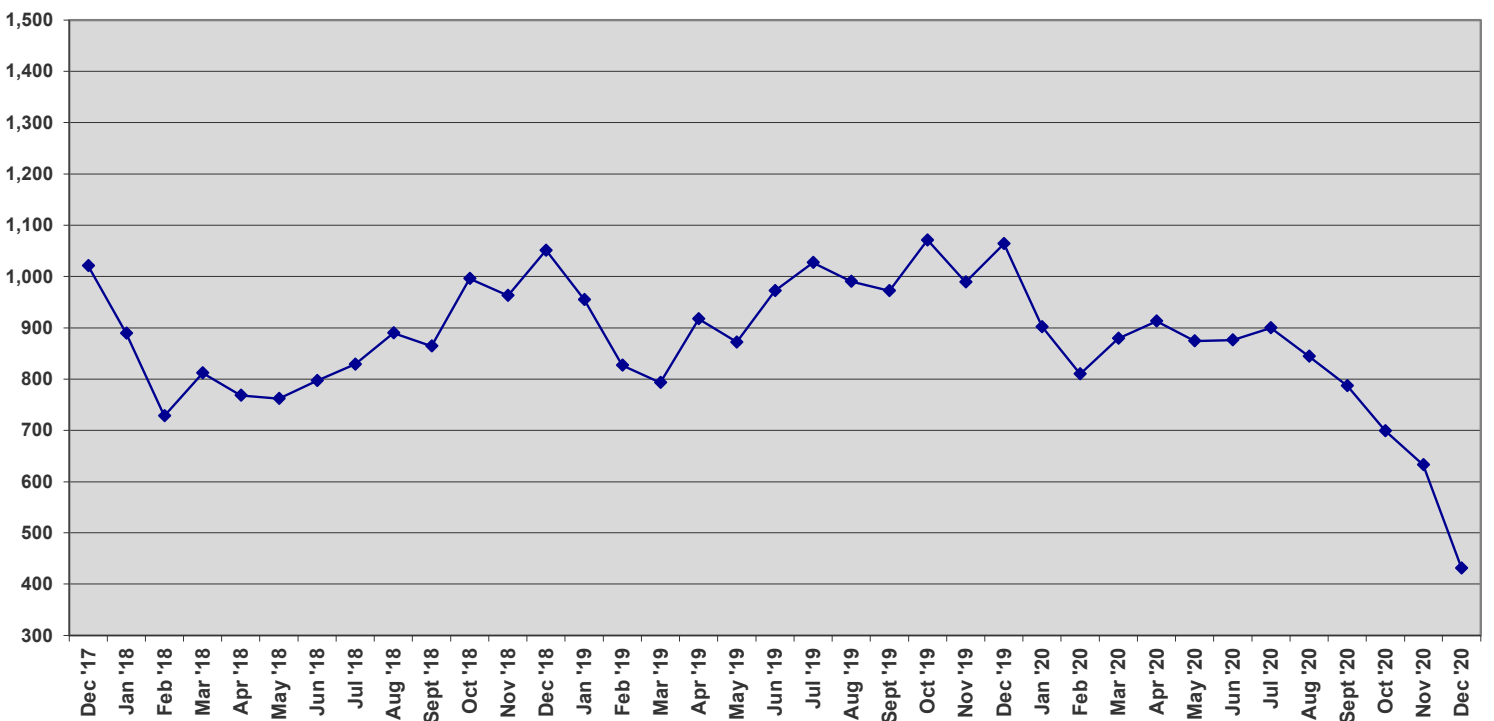
### New Contracts



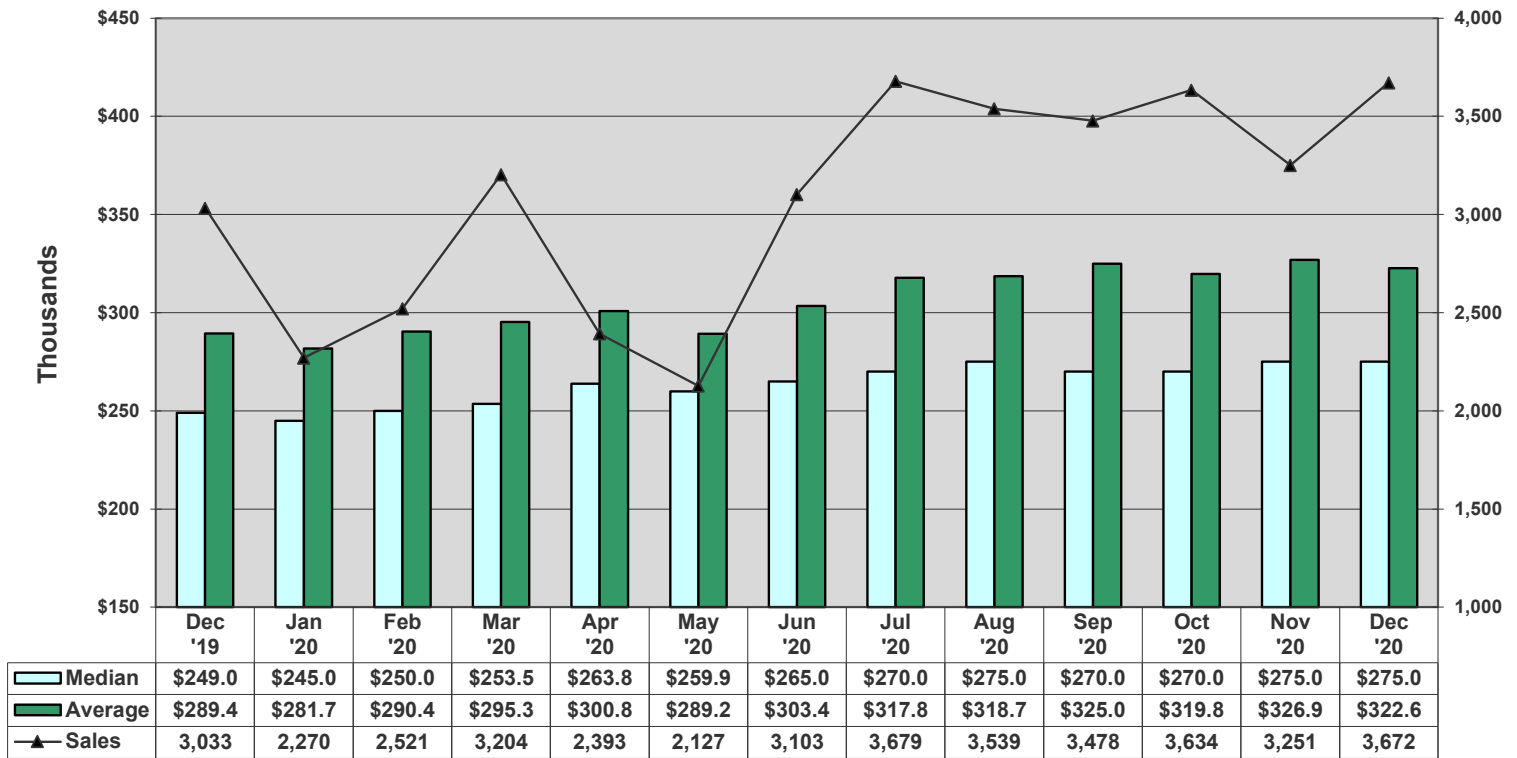
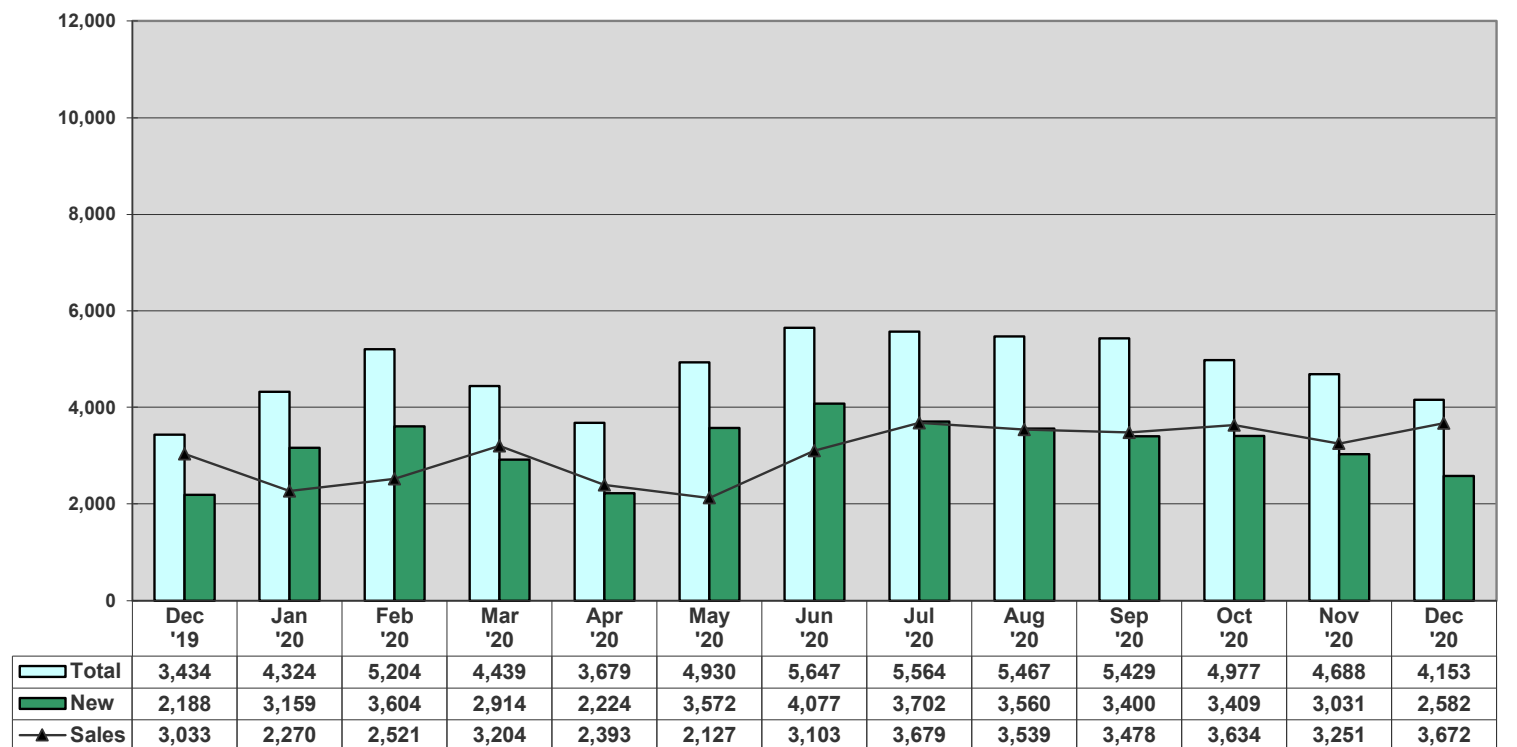
### Three-year History - New Contracts



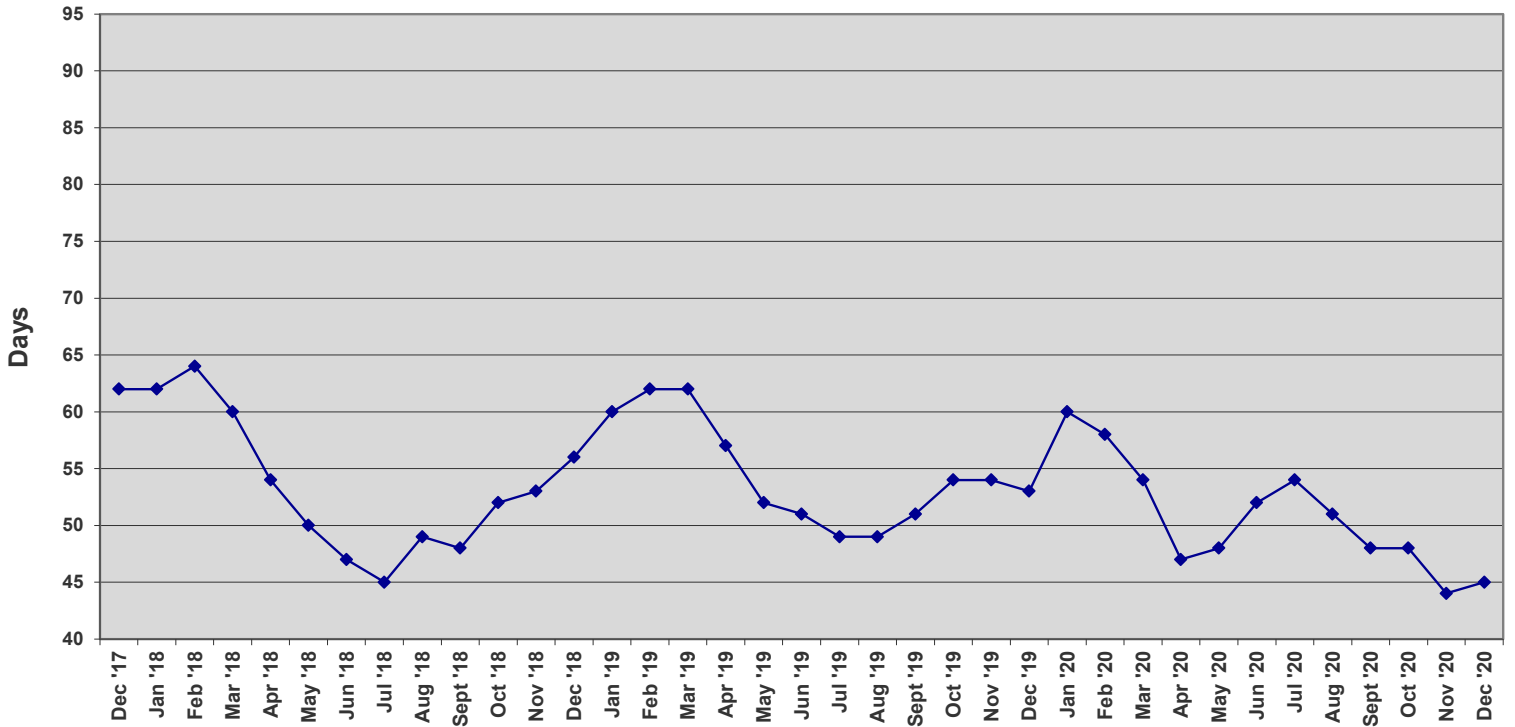
**Total Under Contract**

**Three-year History - Monthly Total Under Contract**


**Units off the Market - Withdrawn or Expired**

**Three-year History - Units off the Market - Withdrawn or Expired**




**Average vs Median Sales Price vs Sales**

**Total Contracts vs New Contracts vs Sales**


Average Days on Market - Listing to Contract



Average Days - Contract to Close

