



# MARKET PULSE

December 2020



ORLANDO REGIONAL  
**REALTOR**  
ASSOCIATION



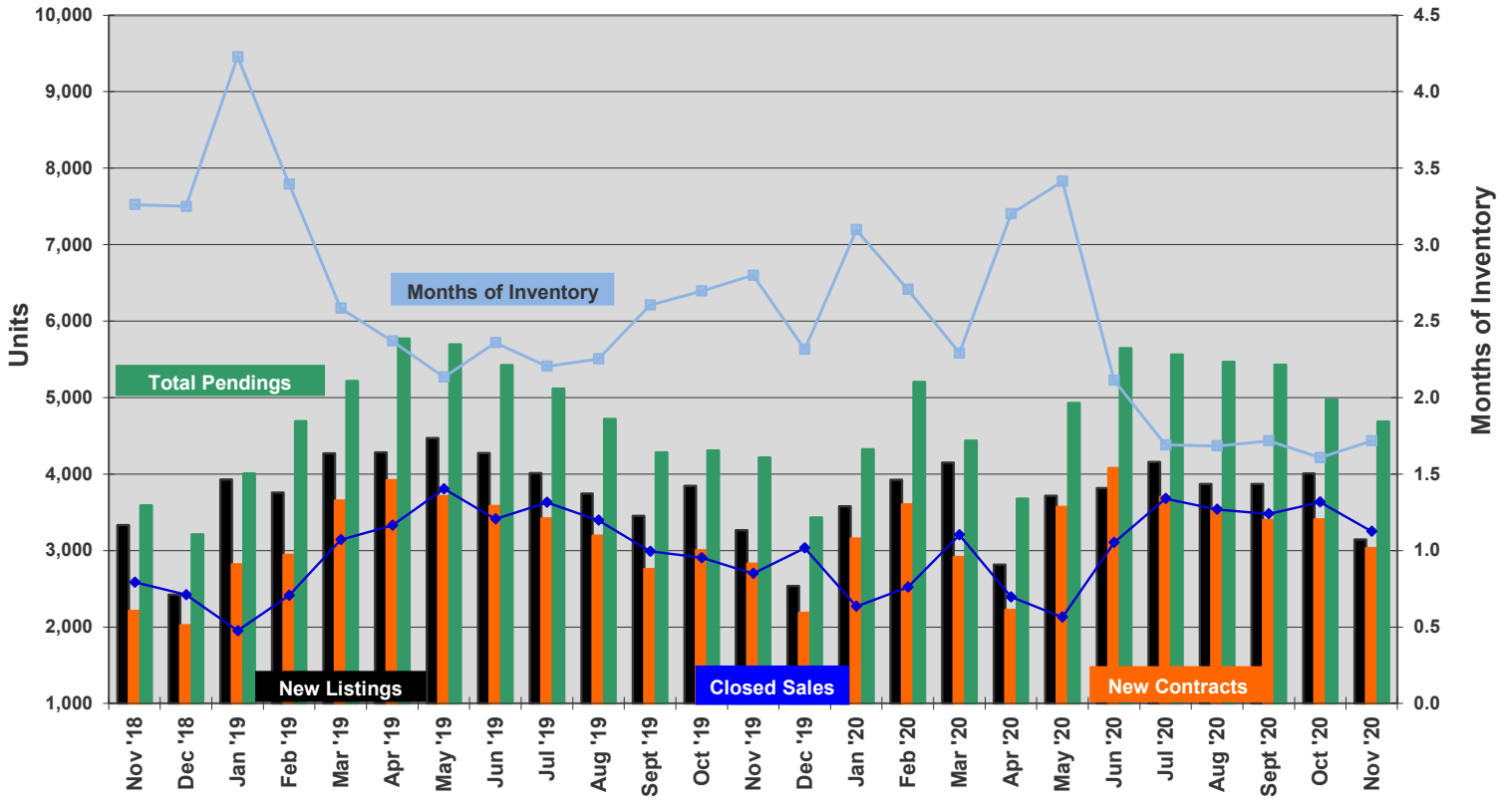
ORRA Originated Sales	Average Mtg Rate	Inventory				New Listings	New Contracts	Under Contract	Back on Market	Expired	Withdrawn	Sales Closed	Days on Market
		Total	Single Family Homes	Condos	Townhomes/Villas								
Oct '18	4.85%	8,272	6,556	1,121	595	3,787	2,684	3,979	632	241	755	2,924	52
Nov '18	<b>4.97%</b>	<b>8,432</b>	<b>6,669</b>	<b>1,163</b>	<b>600</b>	<b>3,333</b>	<b>2,212</b>	<b>3,592</b>	<b>580</b>	<b>221</b>	<b>742</b>	<b>2,585</b>	<b>53</b>
Dec '18	4.38%	7,872	6,183	1,112	577	2,422	2,024	3,212	528	397	654	2,422	56
Jan '19	4.32%	8,243	6,421	1,181	641	3,927	2,821	4,010	596	240	715	1,950	60
Feb '19	4.34%	8,194	6,412	1,222	560	3,758	2,947	4,691	523	195	632	2,414	62
Mar '19	4.21%	8,117	6,406	1,177	534	4,271	3,655	5,216	656	180	613	3,142	62
Apr '19	4.20%	7,888	6,193	1,157	538	4,283	3,920	5,771	687	216	701	3,329	57
May '19	4.15%	8,119	6,382	1,154	583	4,471	3,711	5,696	732	120	752	3,806	52
Jun '19	3.93%	8,050	6,289	1,135	626	4,275	3,581	5,424	677	218	754	3,412	51
Jul '19	3.85%	7,998	6,265	1,115	618	4,012	3,421	5,118	779	218	809	3,628	49
Aug '19	3.72%	7,652	6,027	1,046	579	3,744	3,196	4,721	641	226	764	3,397	49
Sept '19	3.68%	7,784	6,102	1,049	633	3,453	2,757	4,282	654	223	749	2,989	51
Oct '19	3.61%	7,837	6,140	1,061	636	3,846	3,003	4,308	693	247	824	2,906	54
Nov '19	<b>3.61%</b>	<b>7,562</b>	<b>5,922</b>	<b>1,020</b>	<b>620</b>	<b>3,268</b>	<b>2,830</b>	<b>4,217</b>	<b>569</b>	<b>229</b>	<b>760</b>	<b>2,701</b>	<b>54</b>
Dec '19	3.66%	7,023	5,426	1,010	587	2,538	2,188	3,434	488	431	633	3,033	53
Jan '20	3.55%	7,030	5,394	1,040	596	3,579	3,159	4,324	586	176	726	2,270	60
Feb '20	3.43%	6,825	5,136	1,086	603	3,924	3,604	5,204	552	187	623	2,521	58
Mar '20	3.45%	7,341	5,499	1,162	680	4,150	2,914	4,439	953	136	743	3,204	54
Apr '20	3.20%	7,659	5,656	1,237	766	2,814	2,224	3,679	726	206	707	2,393	47
May '20	3.22%	7,260	5,207	1,264	789	3,717	3,572	4,930	683	230	644	2,127	48
Jun '20	3.04%	6,557	4,605	1,207	745	3,816	4,077	5,647	653	212	664	3,103	52
Jul '20	2.97%	6,220	4,219	1,242	759	4,156	3,702	5,564	568	202	698	3,679	54
Aug '20	2.85%	5,958	3,957	1,258	743	3,869	3,560	5,467	442	176	668	3,539	51
Sept '20	2.74%	5,972	3,986	1,240	746	3,870	3,400	5,429	548	190	597	3,478	48
Oct '20	2.72%	5,840	3,880	1,211	749	4,009	3,409	4,977	452	135	564	3,634	48
Nov '20	<b>2.70%</b>	<b>5,583</b>	<b>3,592</b>	<b>1,261</b>	<b>730</b>	<b>3,145</b>	<b>3,031</b>	<b>4,688</b>	<b>414</b>	<b>116</b>	<b>517</b>	<b>3,251</b>	<b>44</b>
ORRA Originated Sales	Average Mtg Rate	Inventory				New Listings	New Contracts	Under Contract	Back on Market	Expired	Withdrawn	Sales Closed	Days on Market
		Total	Single Family Homes	Condos	Townhomes/Villas								

Complete stats and data may be found under Market Info at [www.orlandorealtors.org](http://www.orlandorealtors.org). Comments or suggestions? Contact Mike Blinn, Statistician.

Market Pulse™ data represents all listings taken or sold by ORRA brokers, regardless of location and is exclusive to residential property, which includes townhomes, duplexes, single-family homes, and condos. It does not include vacant land or commercial transactions.

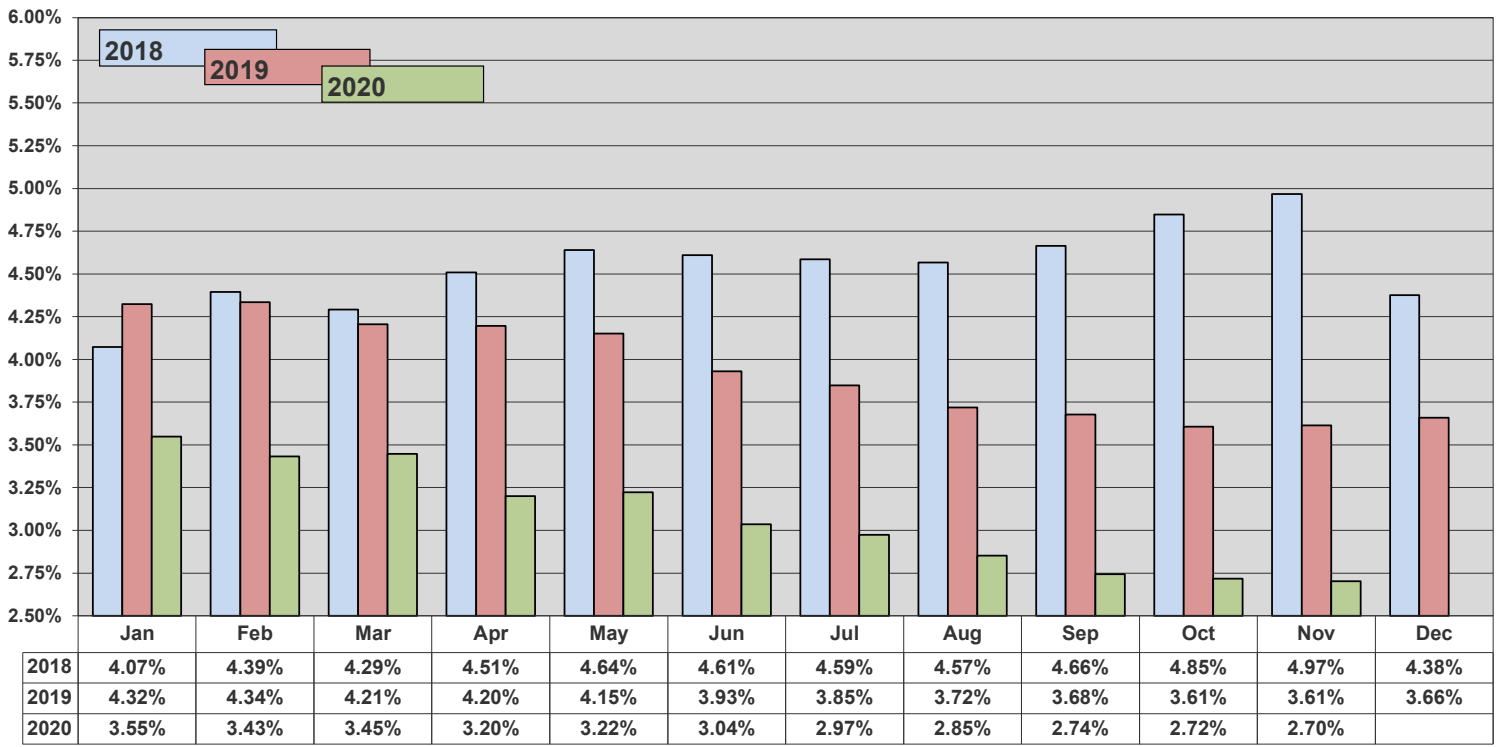


### Two-year Running Recap

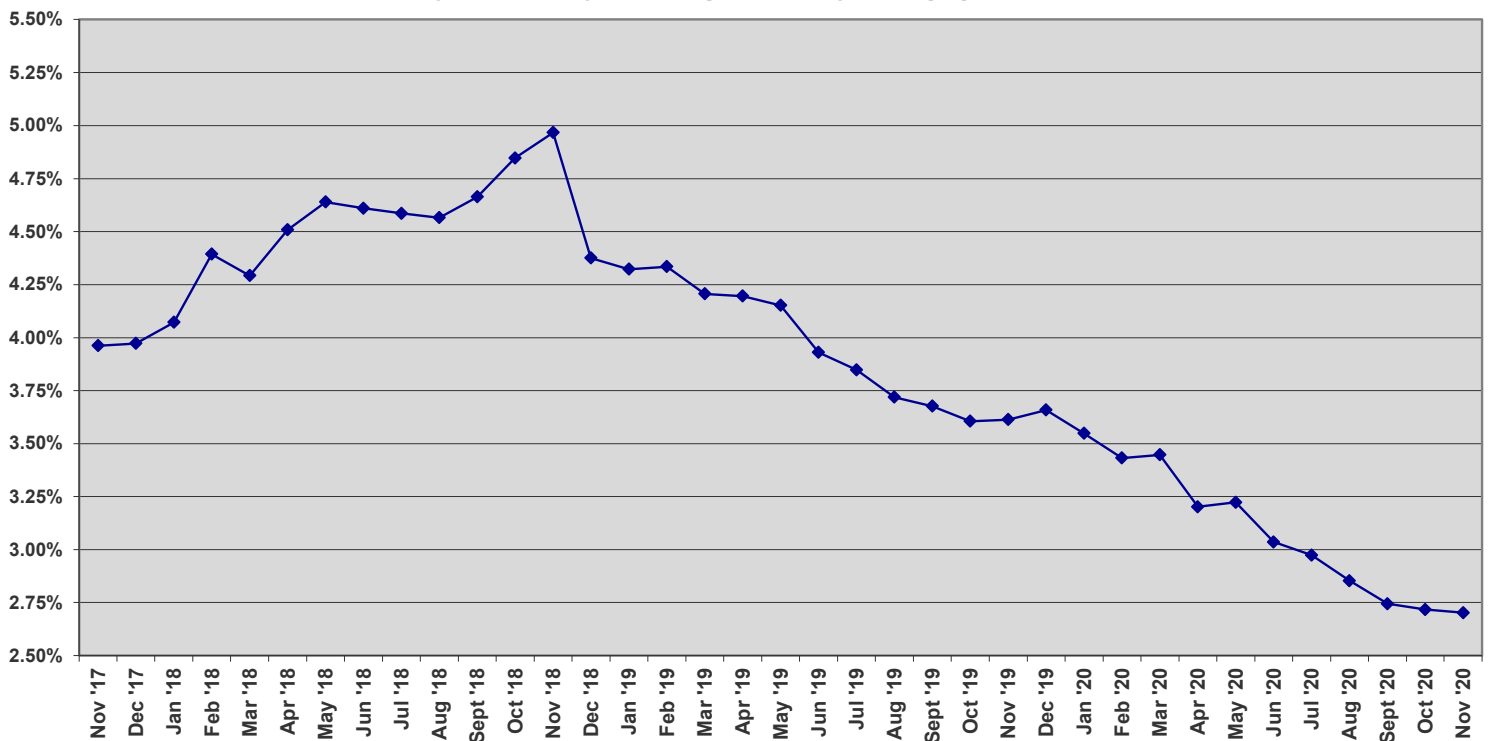




### Average Monthly Mortgage Rate

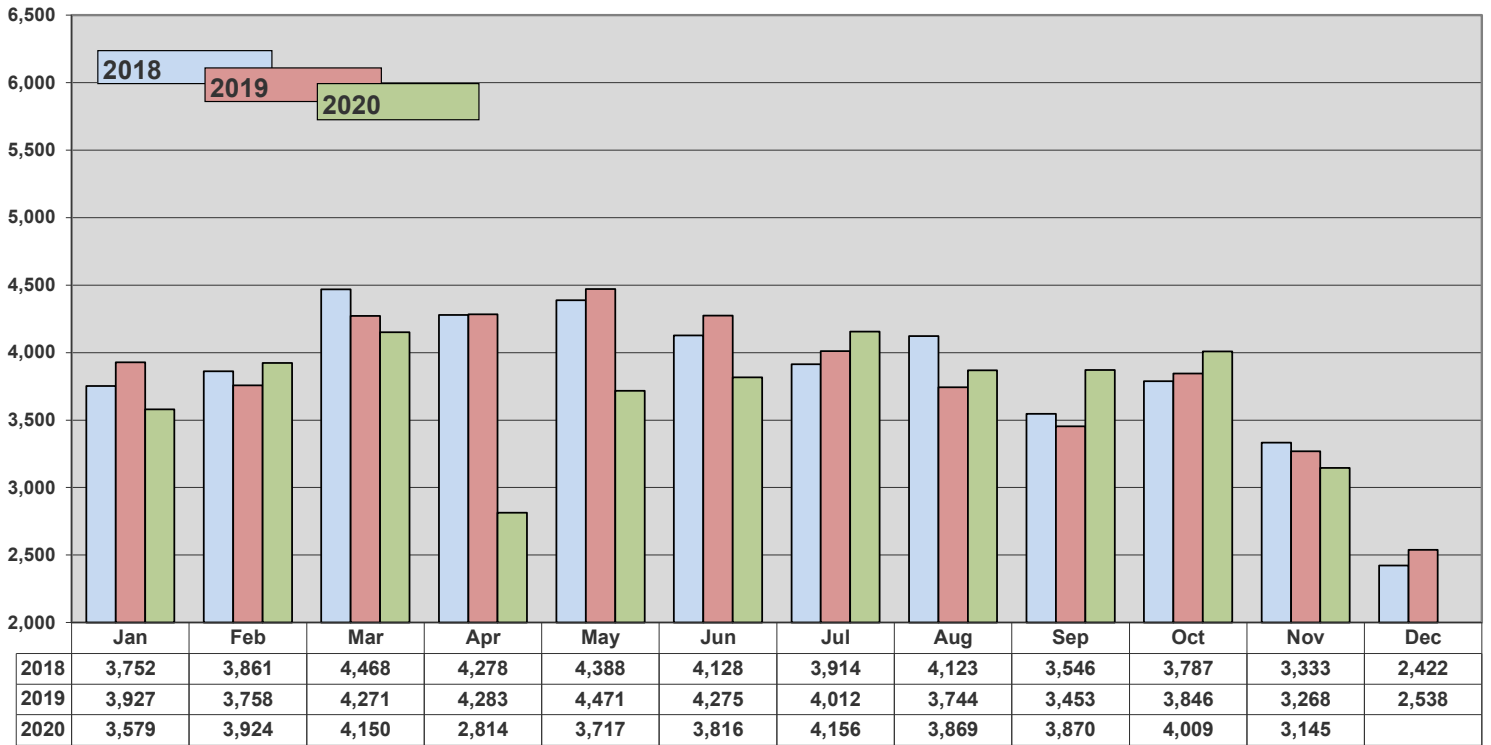


### Three-year History - Average Monthly Mortgage Rate

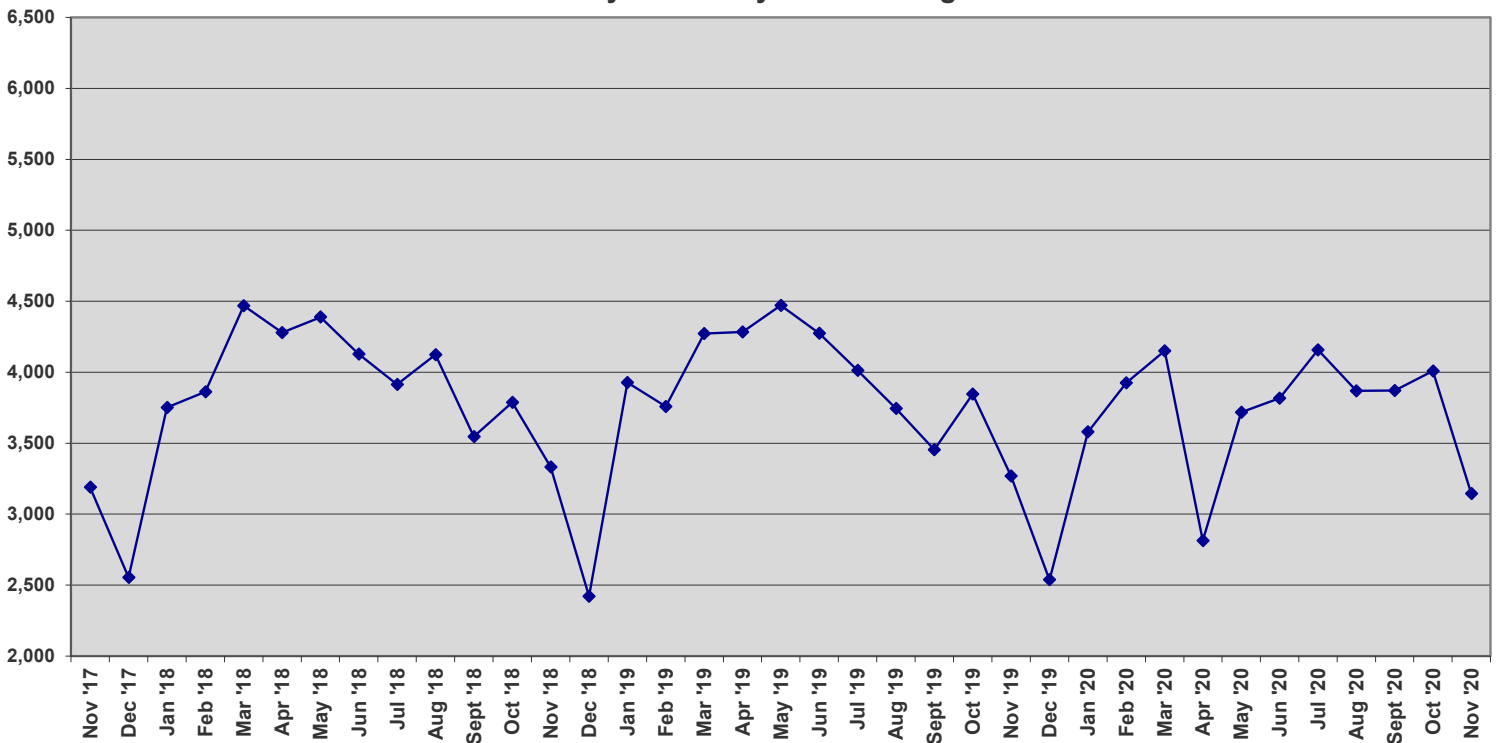




### New Listings

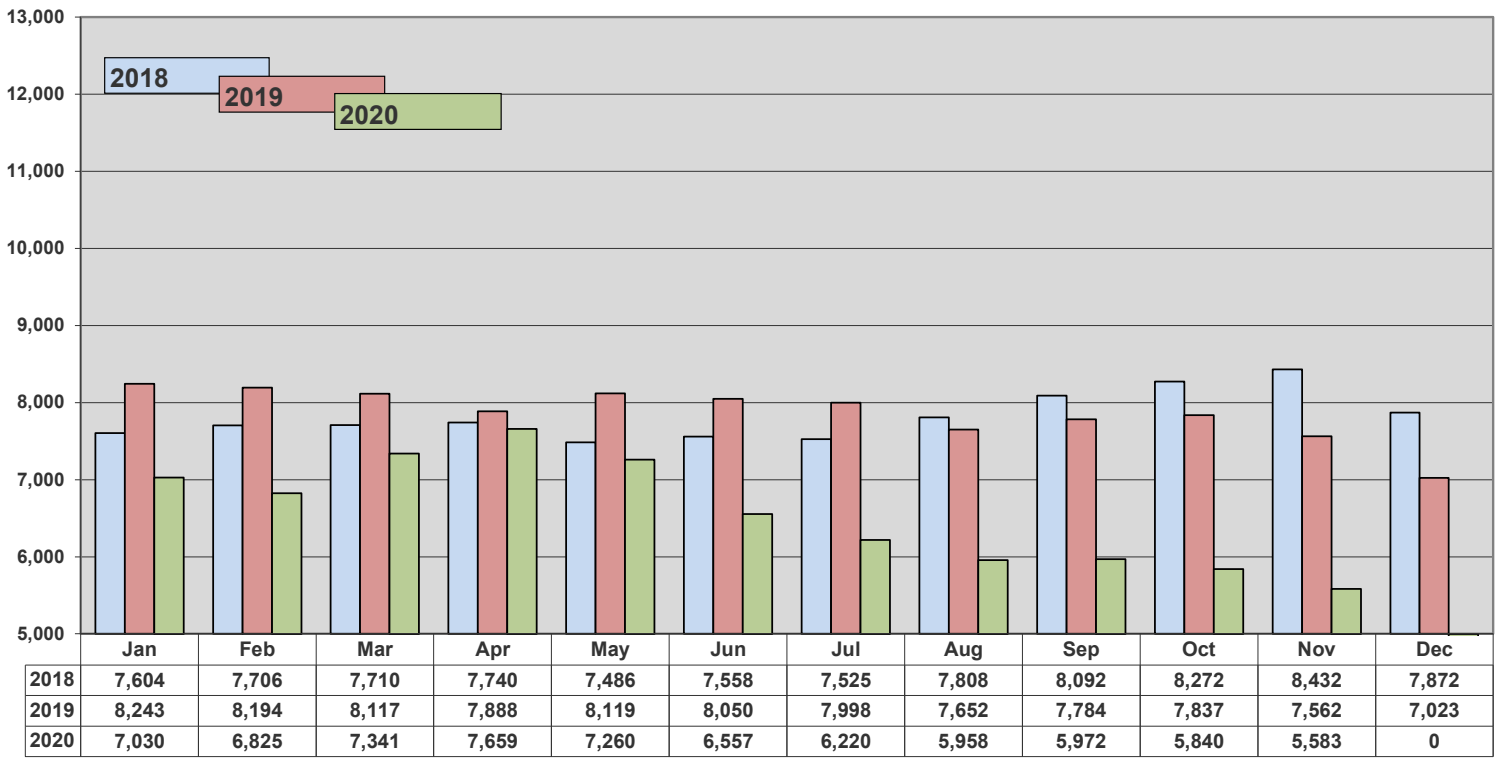


### Three-year History - New Listings

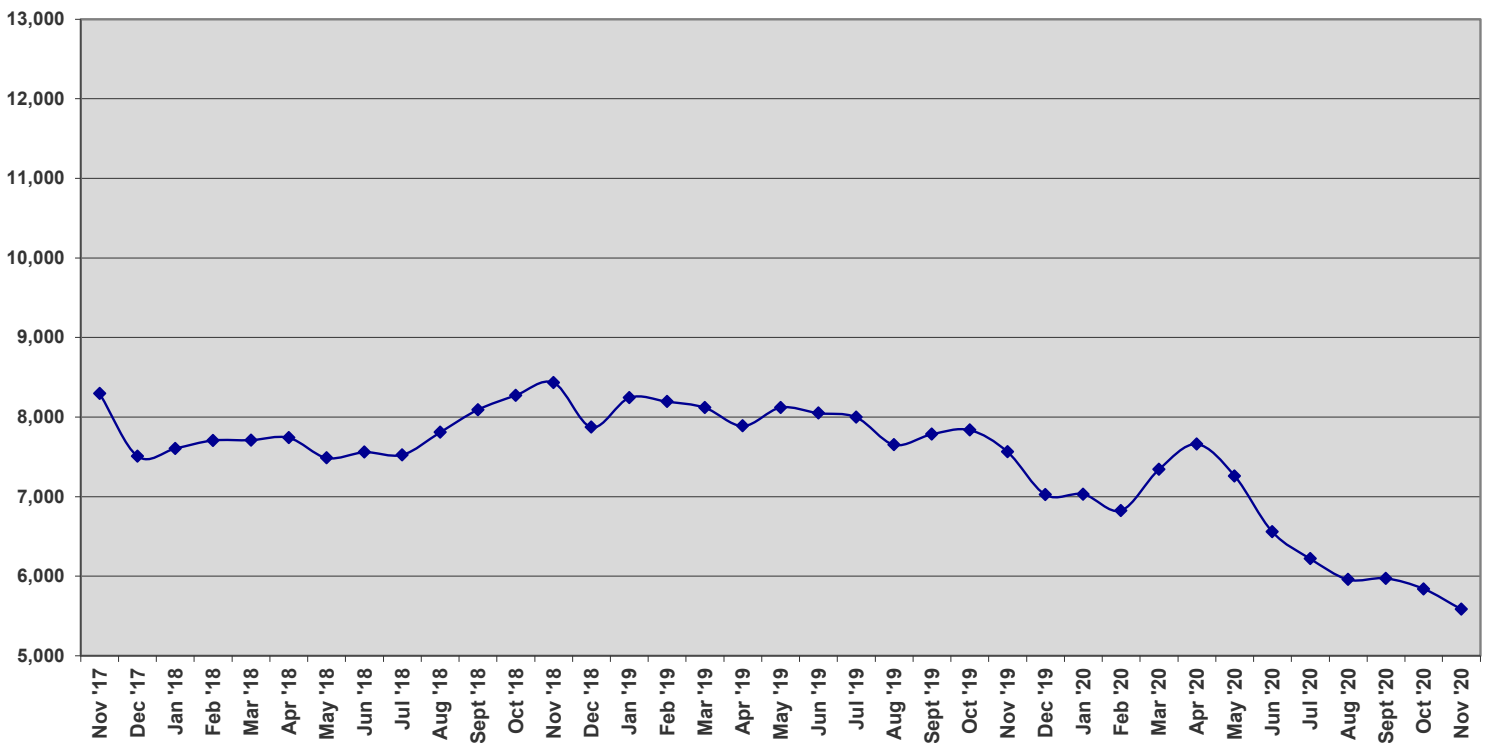




### Inventory

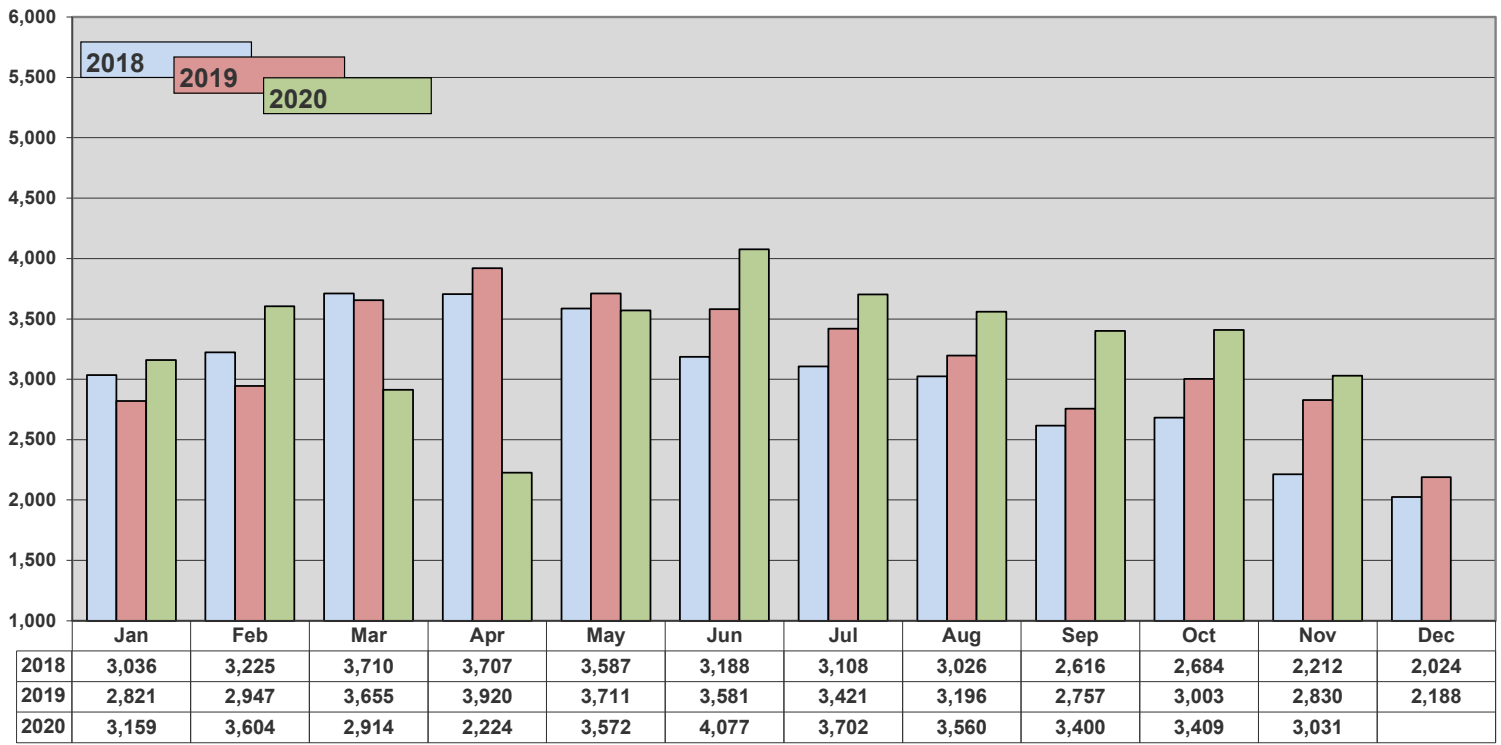


### Three-year History - Inventory

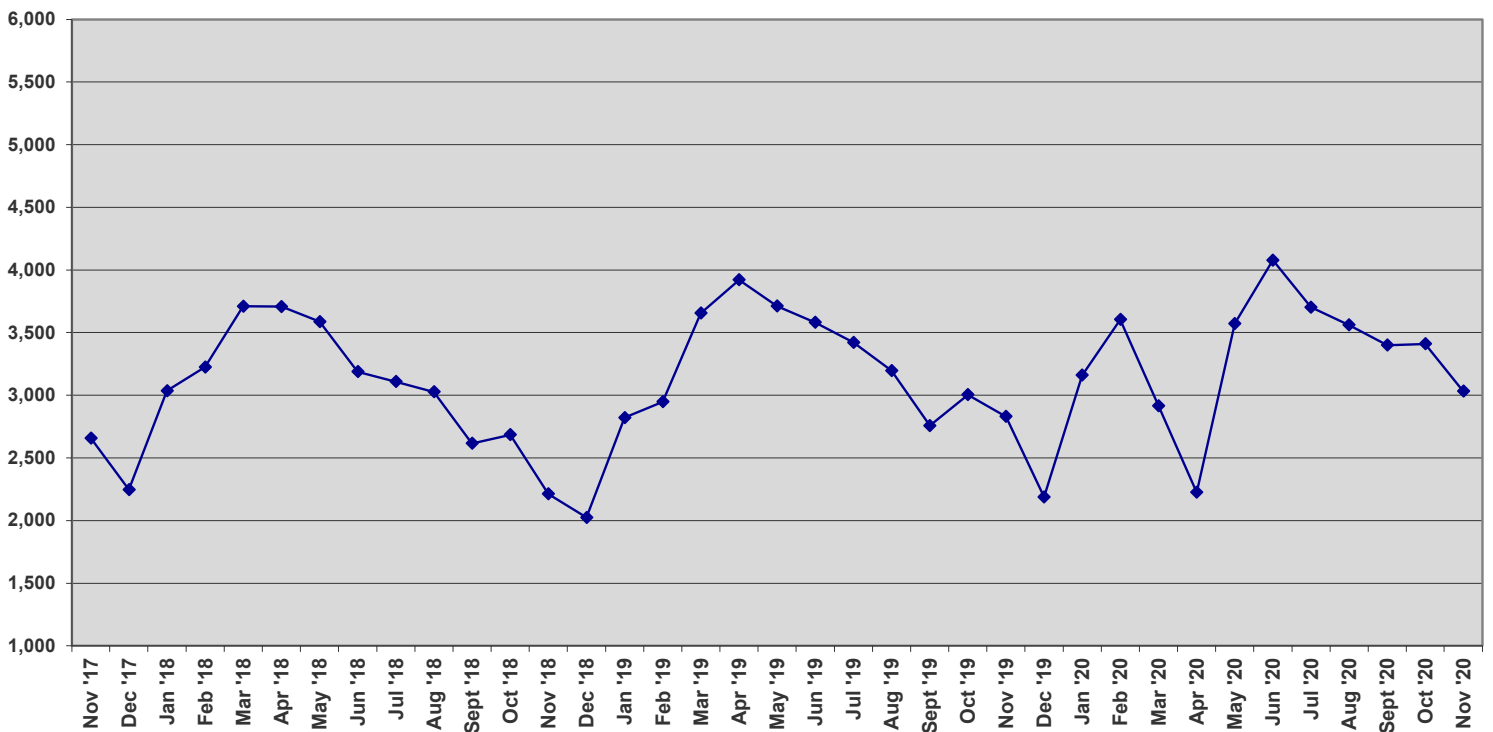




### New Contracts

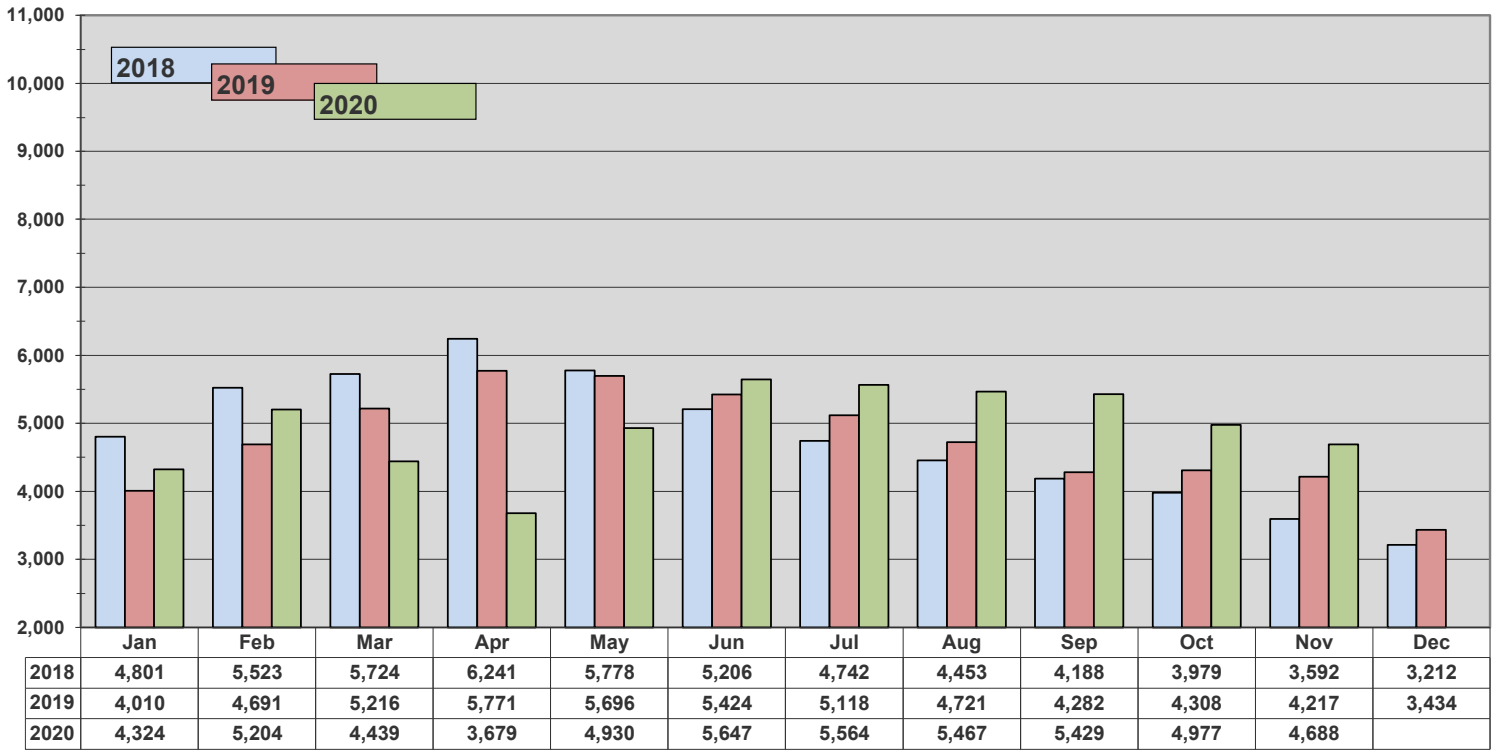


### Three-year History - New Contracts

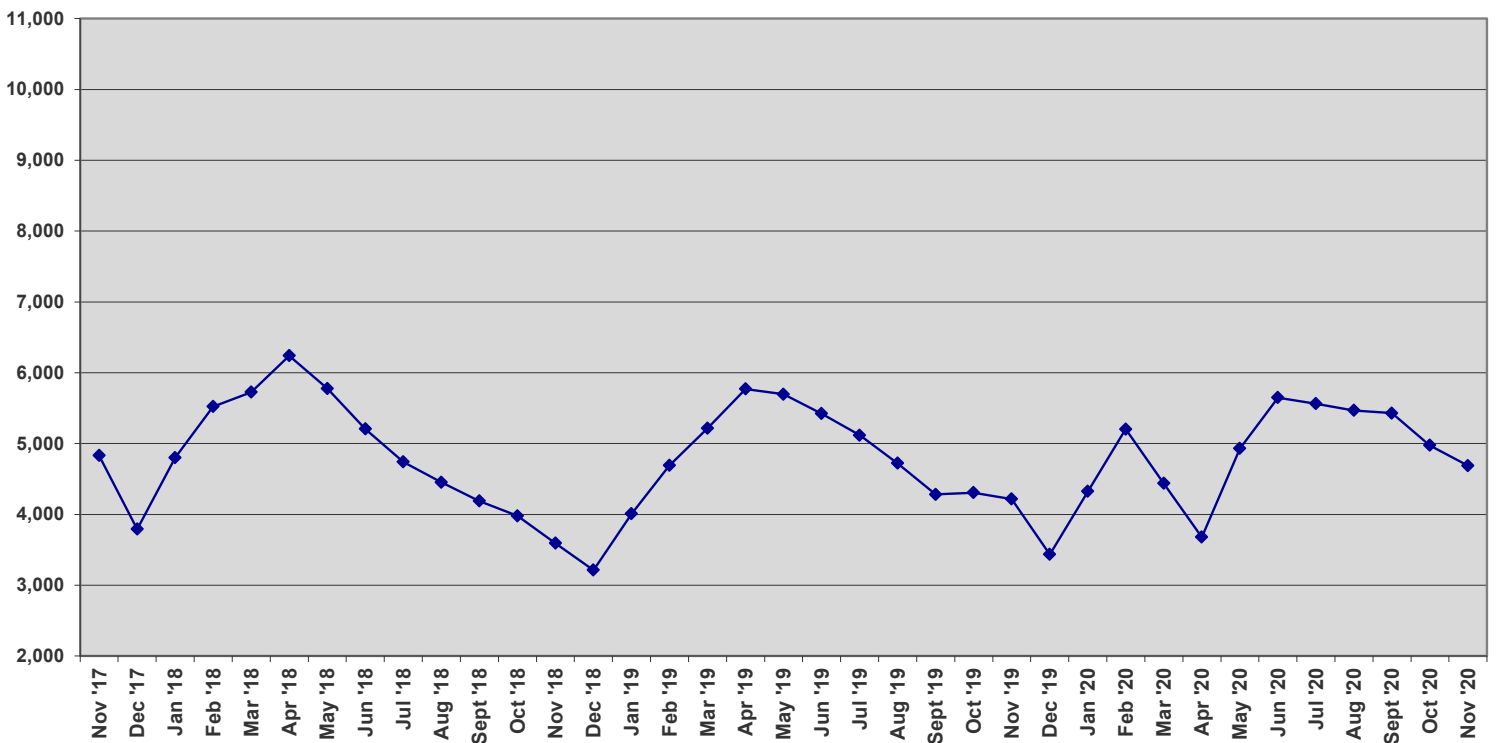




### Total Under Contract

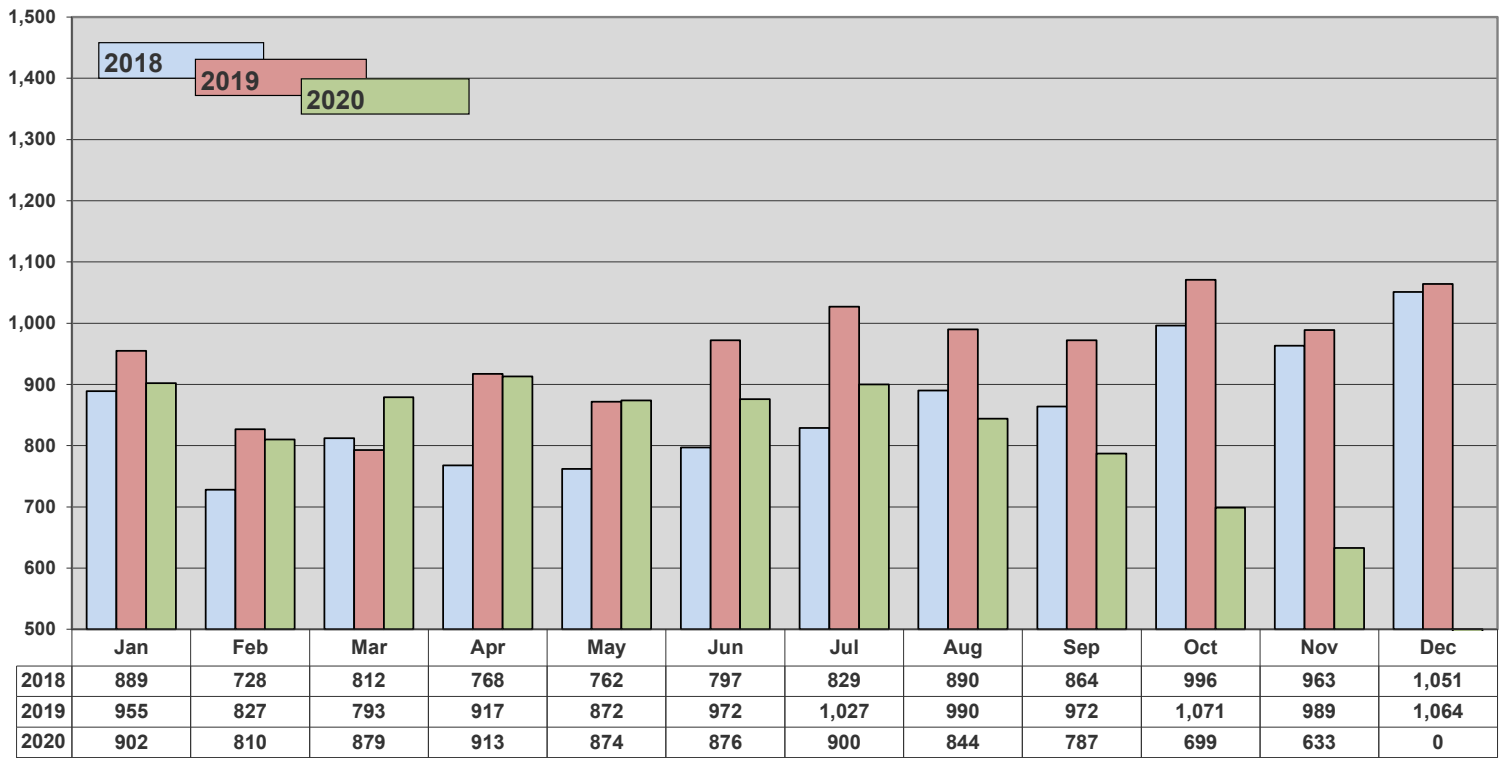


### Three-year History - Monthly Total Under Contract

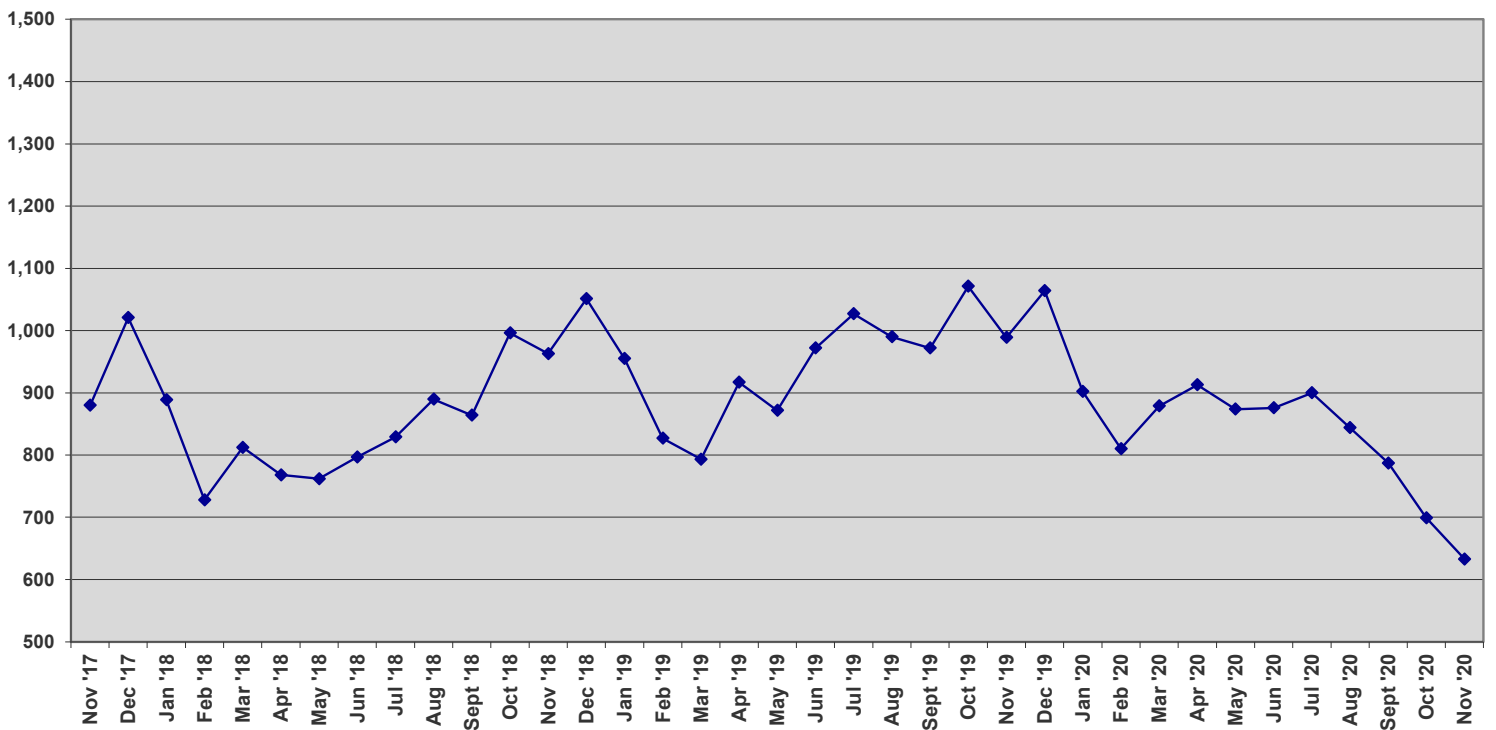




### Units off the Market - Withdrawn or Expired



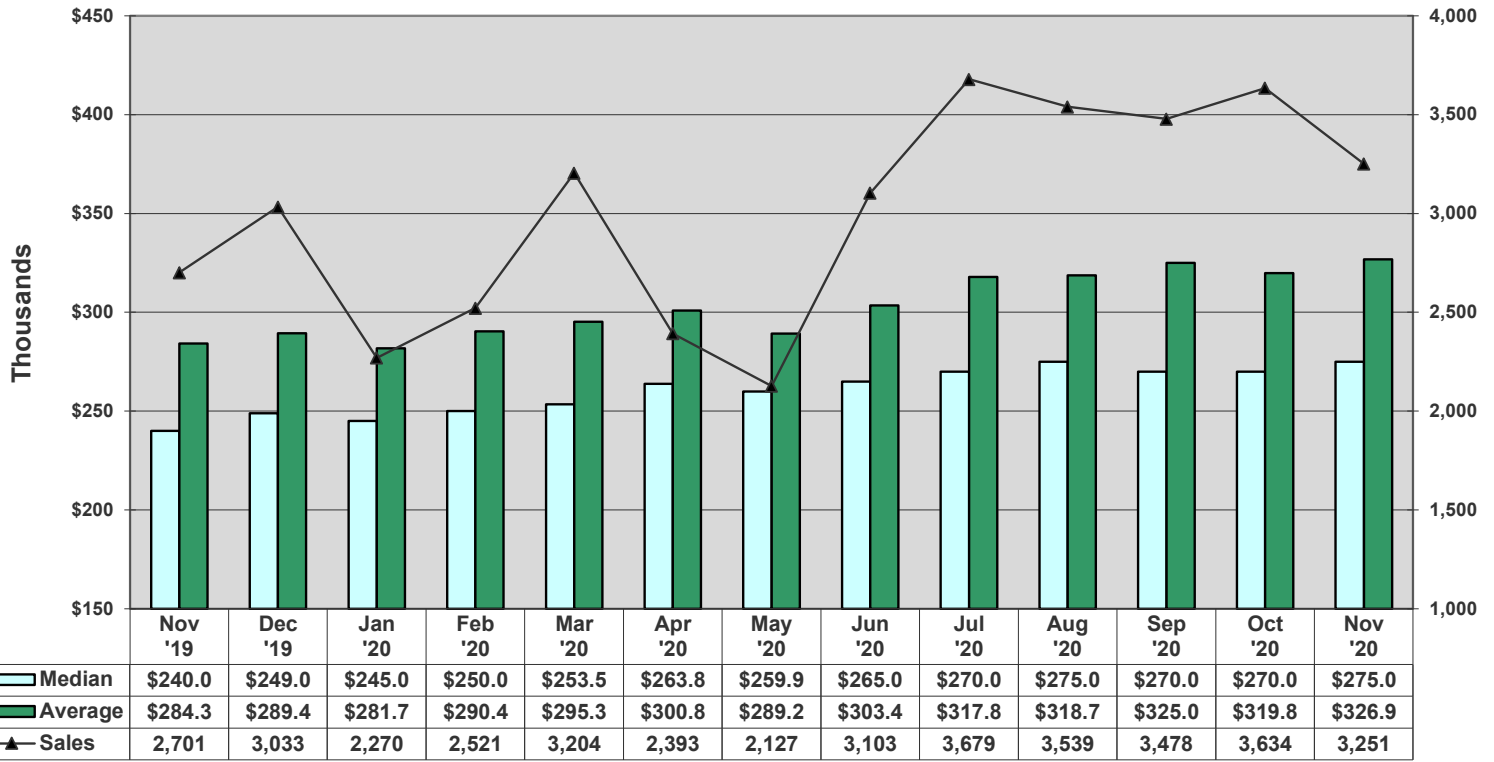
### Three-year History - Units off the Market - Withdrawn or Expired



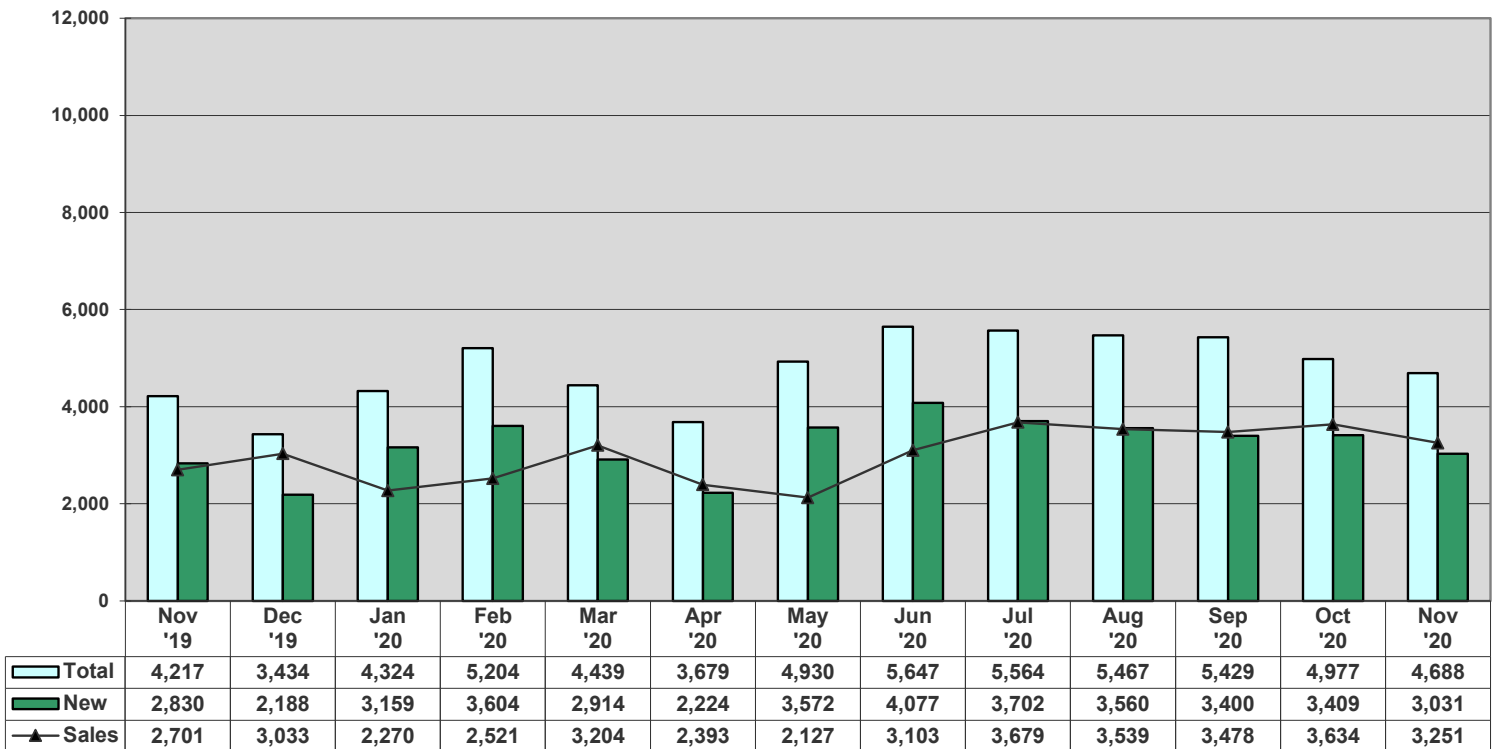




### Average vs Median Sales Price vs Sales

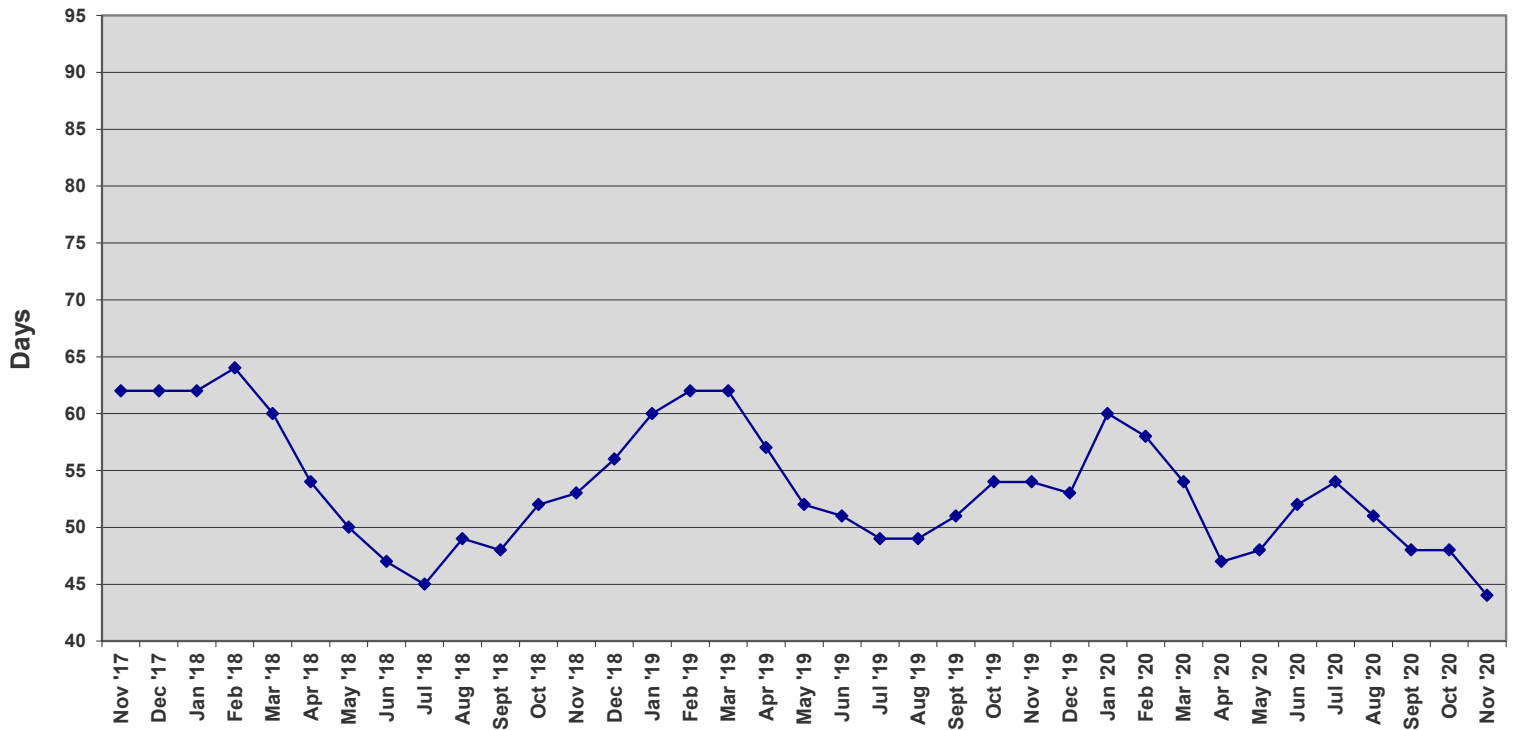


### Total Contracts vs New Contracts vs Sales





### Average Days on Market - Listing to Contract



### Average Days - Contract to Close

