



MARKET PULSE

September 2020



ORLANDO REGIONAL
REALTOR[®]
ASSOCIATION



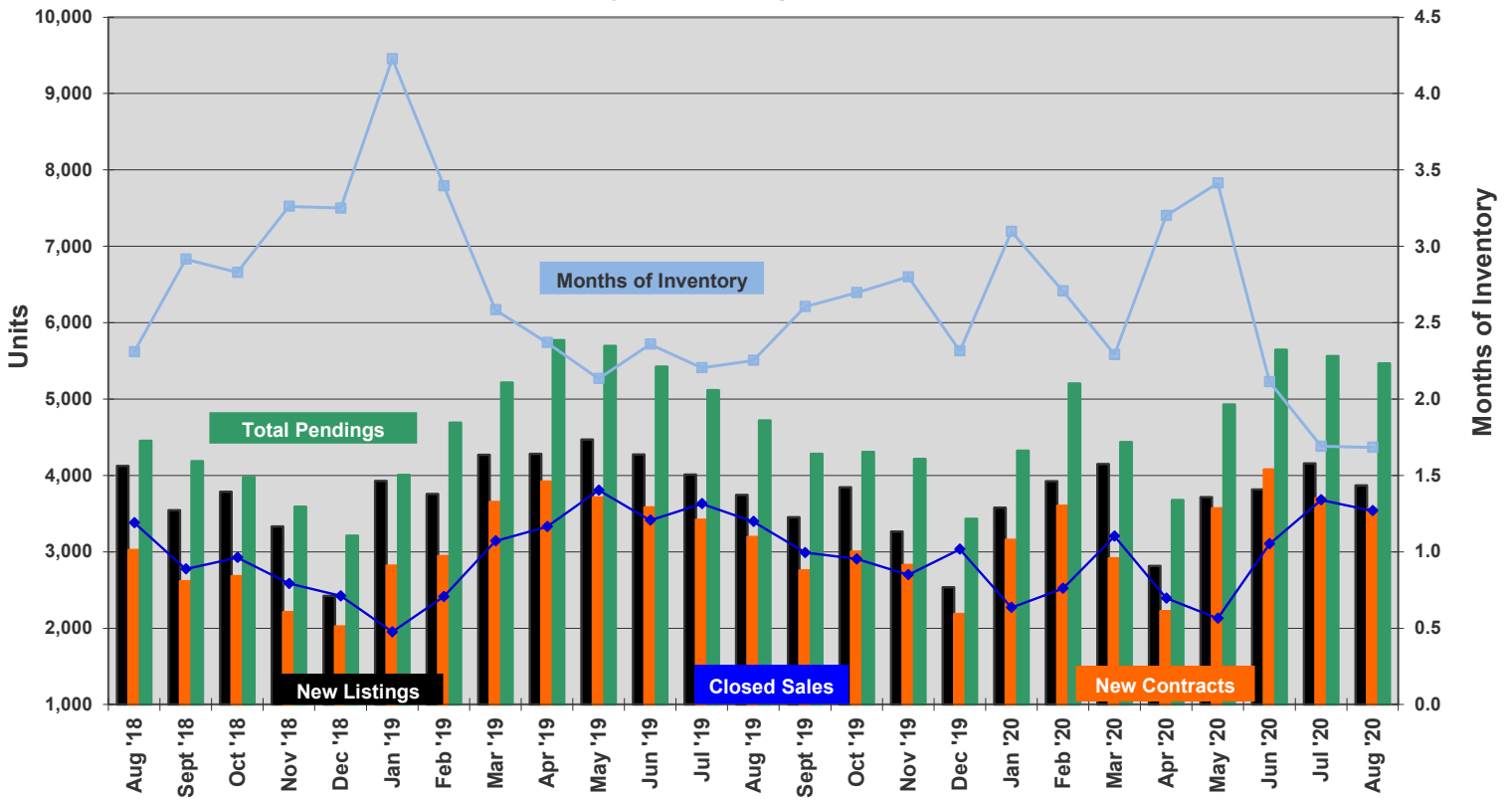
| ORRA Originated Sales | Average Mtg Rate | Inventory | | | | New Listings | New Contracts | Under Contract | Back on Market | Expired | Withdrawn | Sales Closed | Days on Market |
|-----------------------|------------------|--------------|---------------------|--------------|------------------|--------------|---------------|----------------|----------------|------------|------------|--------------|----------------|
| | | Total | Single Family Homes | Condos | Townhomes/Villas | | | | | | | | |
| Jul '18 | 4.59% | 7,525 | 6,038 | 959 | 528 | 3,914 | 3,108 | 4,742 | 681 | 186 | 643 | 3,394 | 45 |
| Aug '18 | 4.57% | 7,808 | 6,277 | 989 | 542 | 4,123 | 3,026 | 4,453 | 642 | 198 | 692 | 3,381 | 49 |
| Sept '18 | 4.66% | 8,092 | 6,471 | 1,071 | 550 | 3,546 | 2,616 | 4,188 | 655 | 217 | 647 | 2,776 | 48 |
| Oct '18 | 4.85% | 8,272 | 6,556 | 1,121 | 595 | 3,787 | 2,684 | 3,979 | 632 | 241 | 755 | 2,924 | 52 |
| Nov '18 | 4.97% | 8,432 | 6,669 | 1,163 | 600 | 3,333 | 2,212 | 3,592 | 580 | 221 | 742 | 2,585 | 53 |
| Dec '18 | 4.38% | 7,872 | 6,183 | 1,112 | 577 | 2,422 | 2,024 | 3,212 | 528 | 397 | 654 | 2,422 | 56 |
| Jan '19 | 4.32% | 8,243 | 6,421 | 1,181 | 641 | 3,927 | 2,821 | 4,010 | 596 | 240 | 715 | 1,950 | 60 |
| Feb '19 | 4.34% | 8,194 | 6,412 | 1,222 | 560 | 3,758 | 2,947 | 4,691 | 523 | 195 | 632 | 2,414 | 62 |
| Mar '19 | 4.21% | 8,117 | 6,406 | 1,177 | 534 | 4,271 | 3,655 | 5,216 | 656 | 180 | 613 | 3,142 | 62 |
| Apr '19 | 4.20% | 7,888 | 6,193 | 1,157 | 538 | 4,283 | 3,920 | 5,771 | 687 | 216 | 701 | 3,329 | 57 |
| May '19 | 4.15% | 8,119 | 6,382 | 1,154 | 583 | 4,471 | 3,711 | 5,696 | 732 | 120 | 752 | 3,806 | 52 |
| Jun '19 | 3.93% | 8,050 | 6,289 | 1,135 | 626 | 4,275 | 3,581 | 5,424 | 677 | 218 | 754 | 3,412 | 51 |
| Jul '19 | 3.85% | 7,998 | 6,265 | 1,115 | 618 | 4,012 | 3,421 | 5,118 | 779 | 218 | 809 | 3,628 | 49 |
| Aug '19 | 3.72% | 7,652 | 6,027 | 1,046 | 579 | 3,744 | 3,196 | 4,721 | 641 | 226 | 764 | 3,397 | 49 |
| Sept '19 | 3.68% | 7,784 | 6,102 | 1,049 | 633 | 3,453 | 2,757 | 4,282 | 654 | 223 | 749 | 2,989 | 51 |
| Oct '19 | 3.61% | 7,837 | 6,140 | 1,061 | 636 | 3,846 | 3,003 | 4,308 | 693 | 247 | 824 | 2,906 | 54 |
| Nov '19 | 3.61% | 7,562 | 5,922 | 1,020 | 620 | 3,268 | 2,830 | 4,217 | 569 | 229 | 760 | 2,701 | 54 |
| Dec '19 | 3.66% | 7,023 | 5,426 | 1,010 | 587 | 2,538 | 2,188 | 3,434 | 488 | 431 | 633 | 3,033 | 53 |
| Jan '20 | 3.55% | 7,030 | 5,394 | 1,040 | 596 | 3,579 | 3,159 | 4,324 | 586 | 176 | 726 | 2,270 | 60 |
| Feb '20 | 3.43% | 6,825 | 5,136 | 1,086 | 603 | 3,924 | 3,604 | 5,204 | 552 | 187 | 623 | 2,521 | 58 |
| Mar '20 | 3.45% | 7,341 | 5,499 | 1,162 | 680 | 4,150 | 2,914 | 4,439 | 953 | 136 | 743 | 3,204 | 54 |
| Apr '20 | 3.20% | 7,659 | 5,656 | 1,237 | 766 | 2,814 | 2,224 | 3,679 | 726 | 206 | 707 | 2,393 | 47 |
| May '20 | 3.22% | 7,260 | 5,207 | 1,264 | 789 | 3,717 | 3,572 | 4,930 | 683 | 230 | 644 | 2,127 | 48 |
| Jun '20 | 3.04% | 6,557 | 4,605 | 1,207 | 745 | 3,816 | 4,077 | 5,647 | 653 | 212 | 664 | 3,103 | 52 |
| Jul '20 | 2.97% | 6,220 | 4,219 | 1,242 | 759 | 4,156 | 3,702 | 5,564 | 568 | 202 | 698 | 3,679 | 54 |
| Aug '20 | 2.85% | 5,958 | 3,957 | 1,258 | 743 | 3,869 | 3,560 | 5,467 | 442 | 176 | 668 | 3,539 | 51 |
| ORRA Originated Sales | Average Mtg Rate | Total | Single Family Homes | Condos | Townhomes/Villas | New Listings | New Contracts | Under Contract | Back on Market | Expired | Withdrawn | Sales Closed | Days on Market |
| Inventory | | | | | | | | | | | | | |

Complete stats and data may be found under Market Info at www.orlandorealtors.org. Comments or suggestions? Contact Mike Blinn, Statistician.

Market Pulse™ data represents all listings taken or sold by ORRA brokers, regardless of location and is exclusive to residential property, which includes townhomes, duplexes, single-family homes, and condos. It does not include vacant land or commercial transactions.

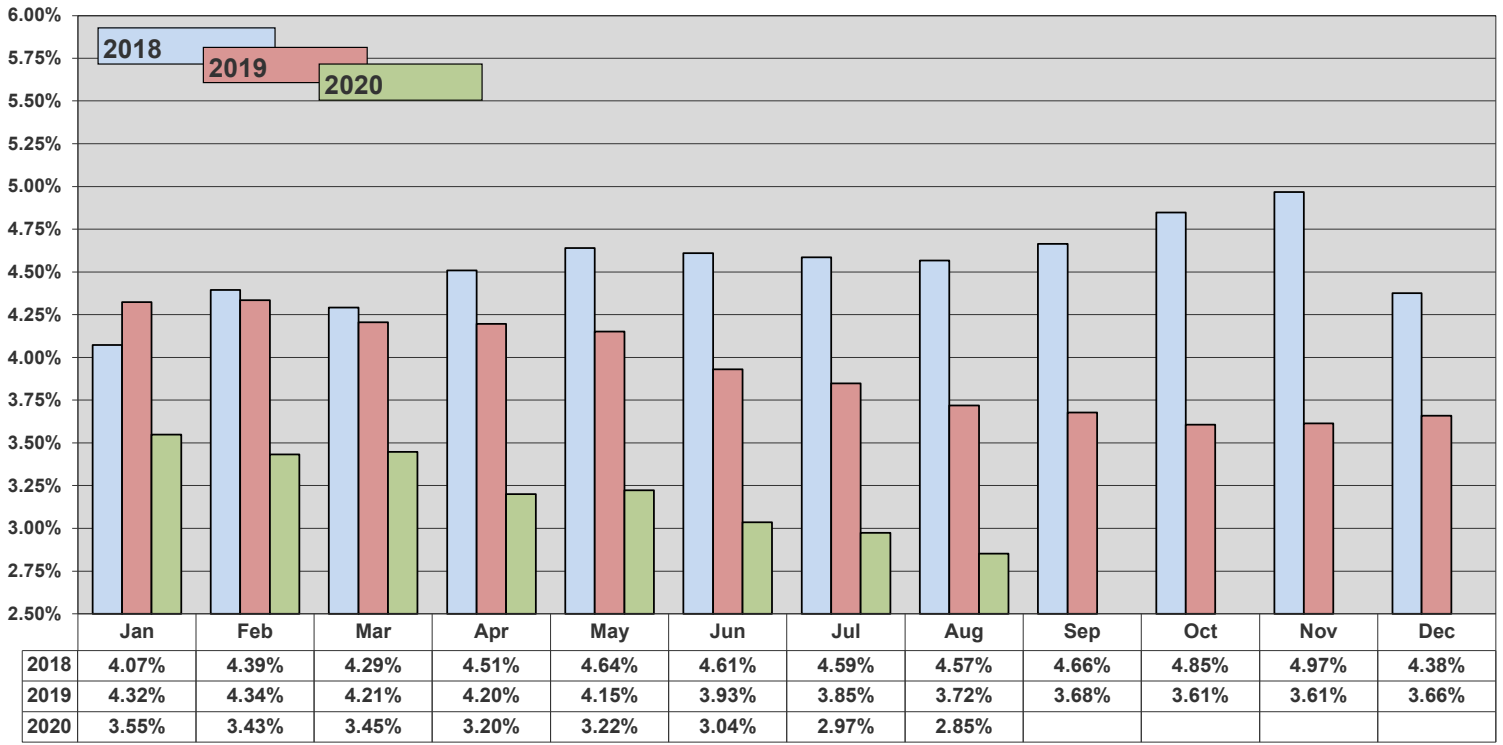


Two-year Running Recap

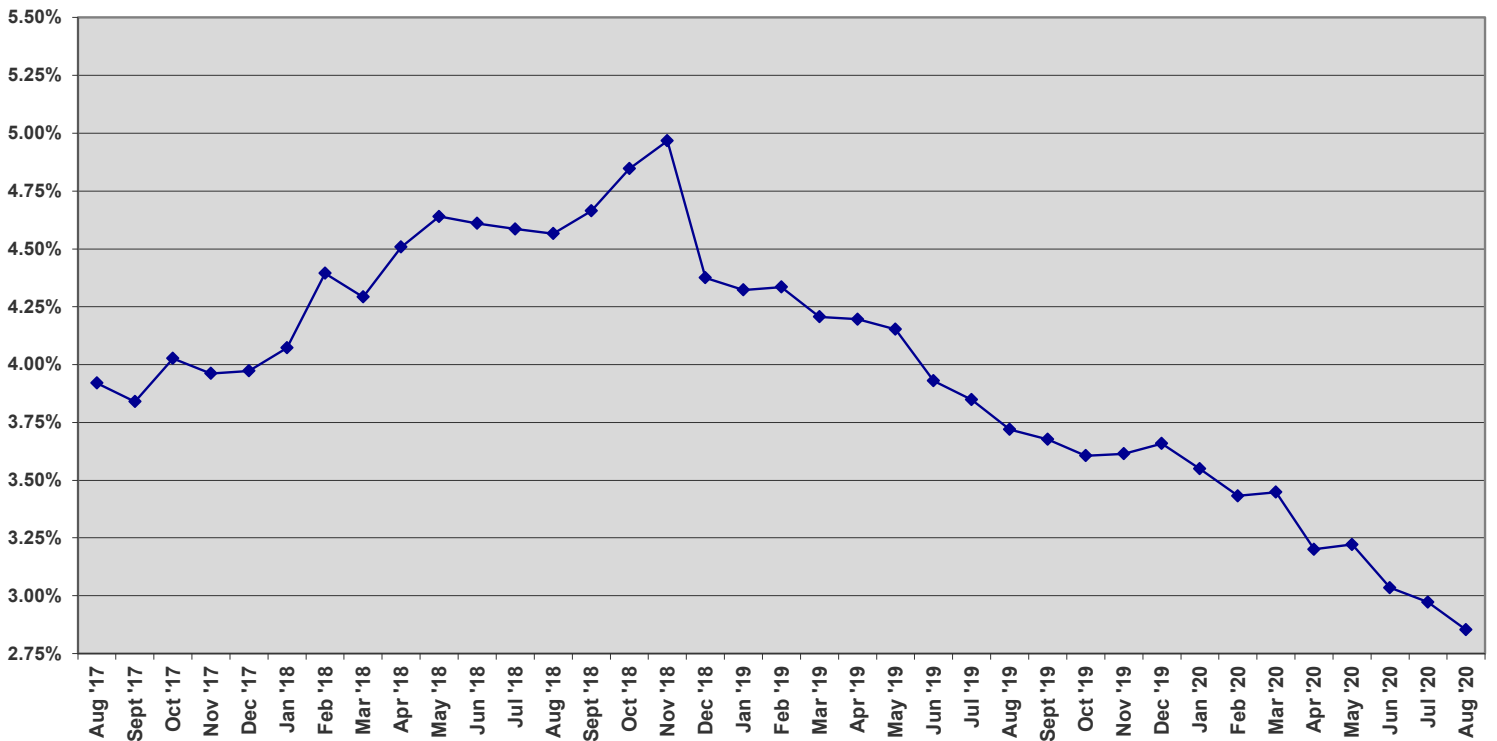




Average Monthly Mortgage Rate

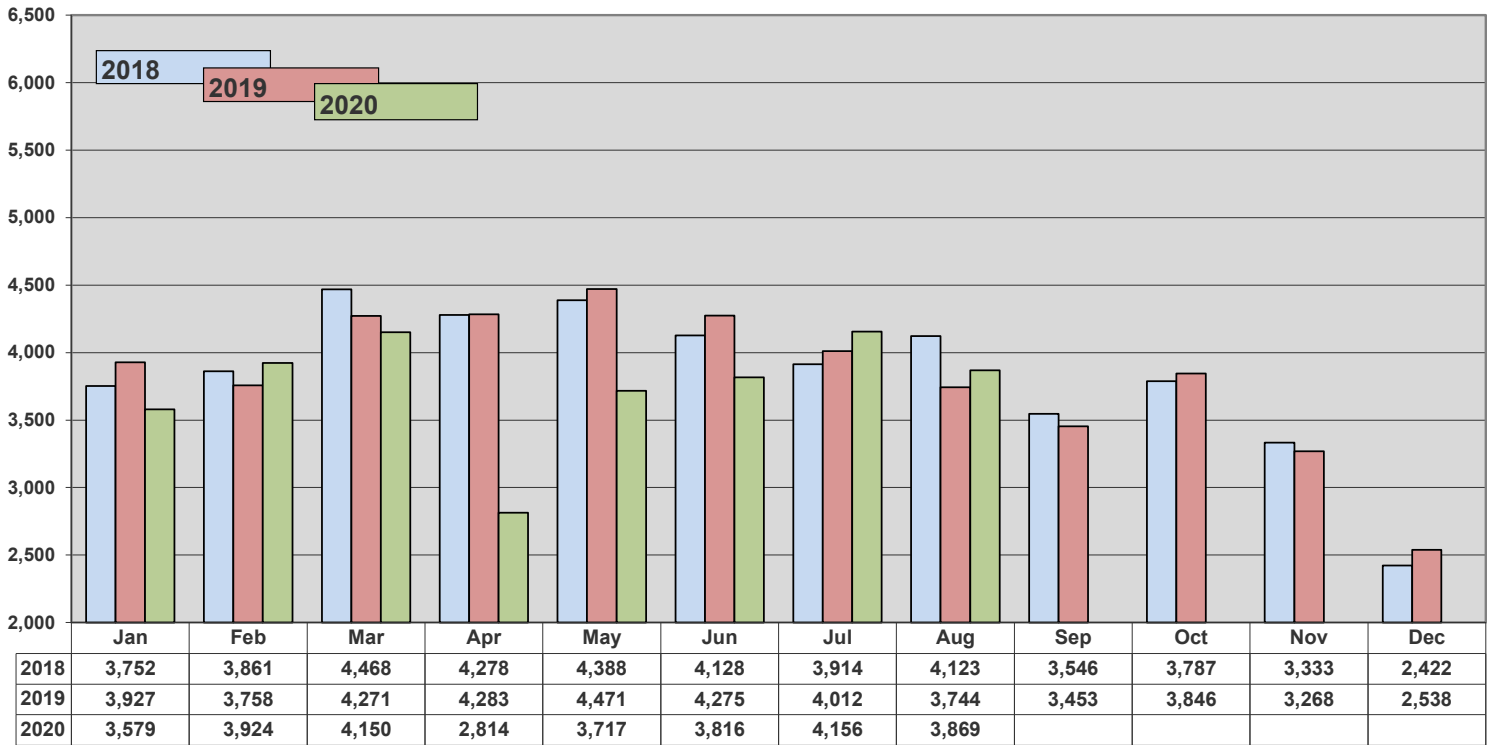


Three-year History - Average Monthly Mortgage Rate

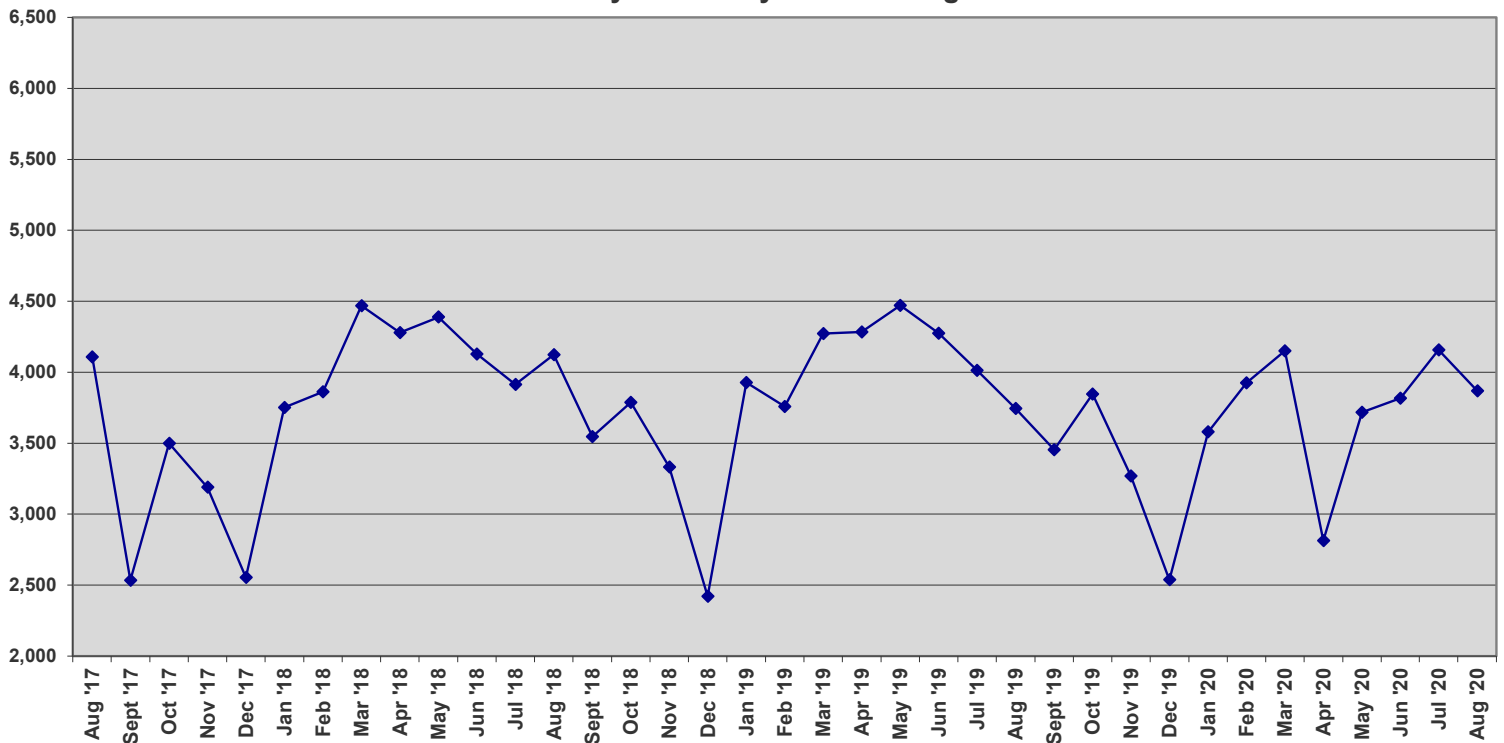




New Listings

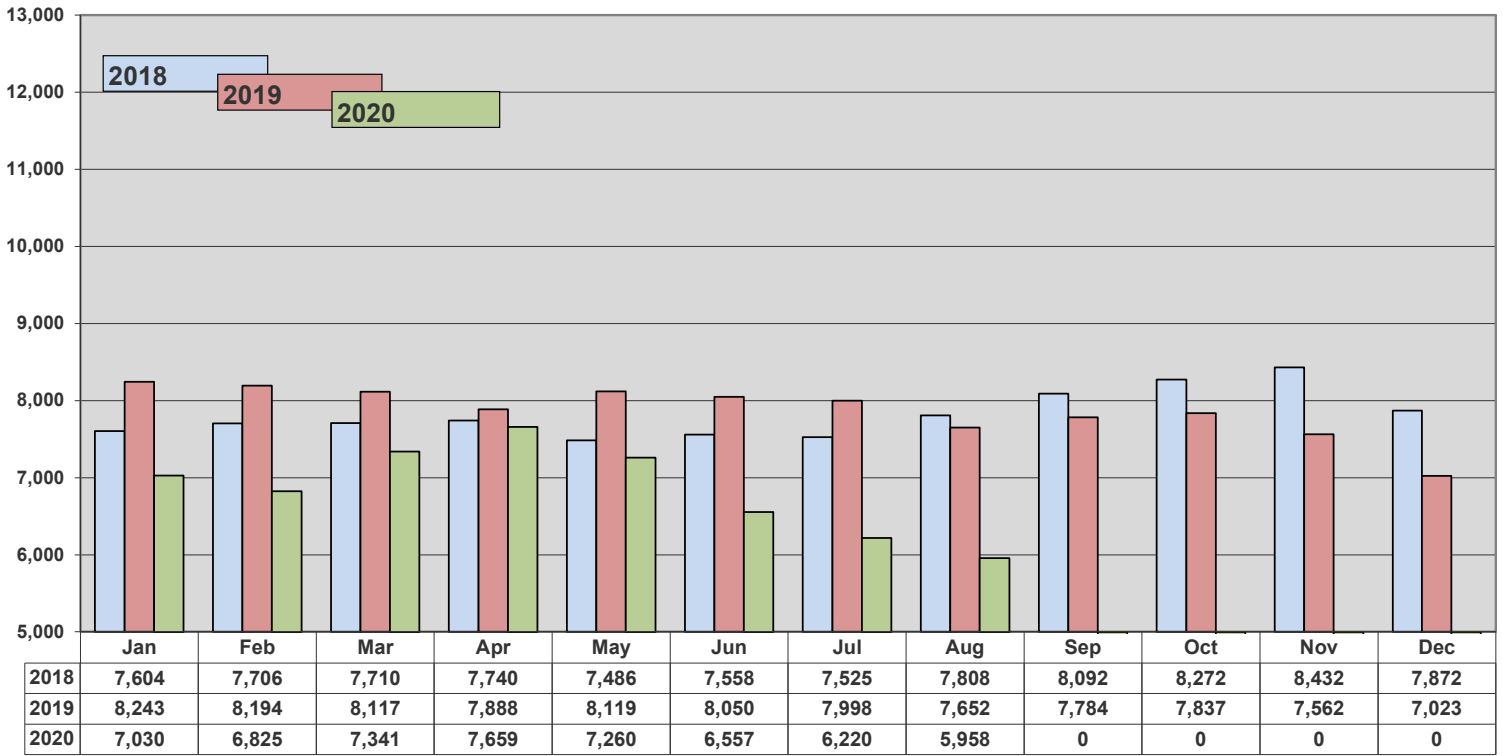


Three-year History - New Listings

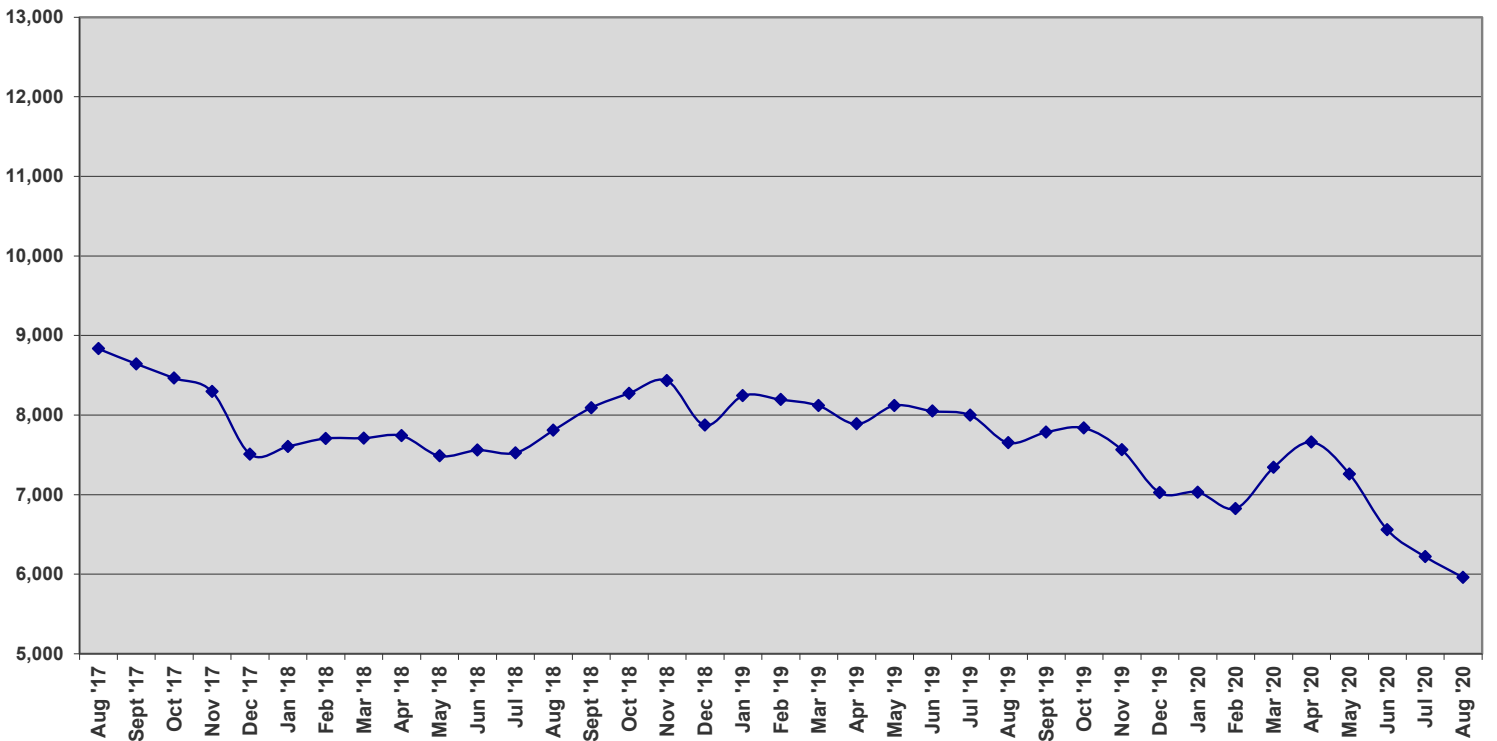




Inventory

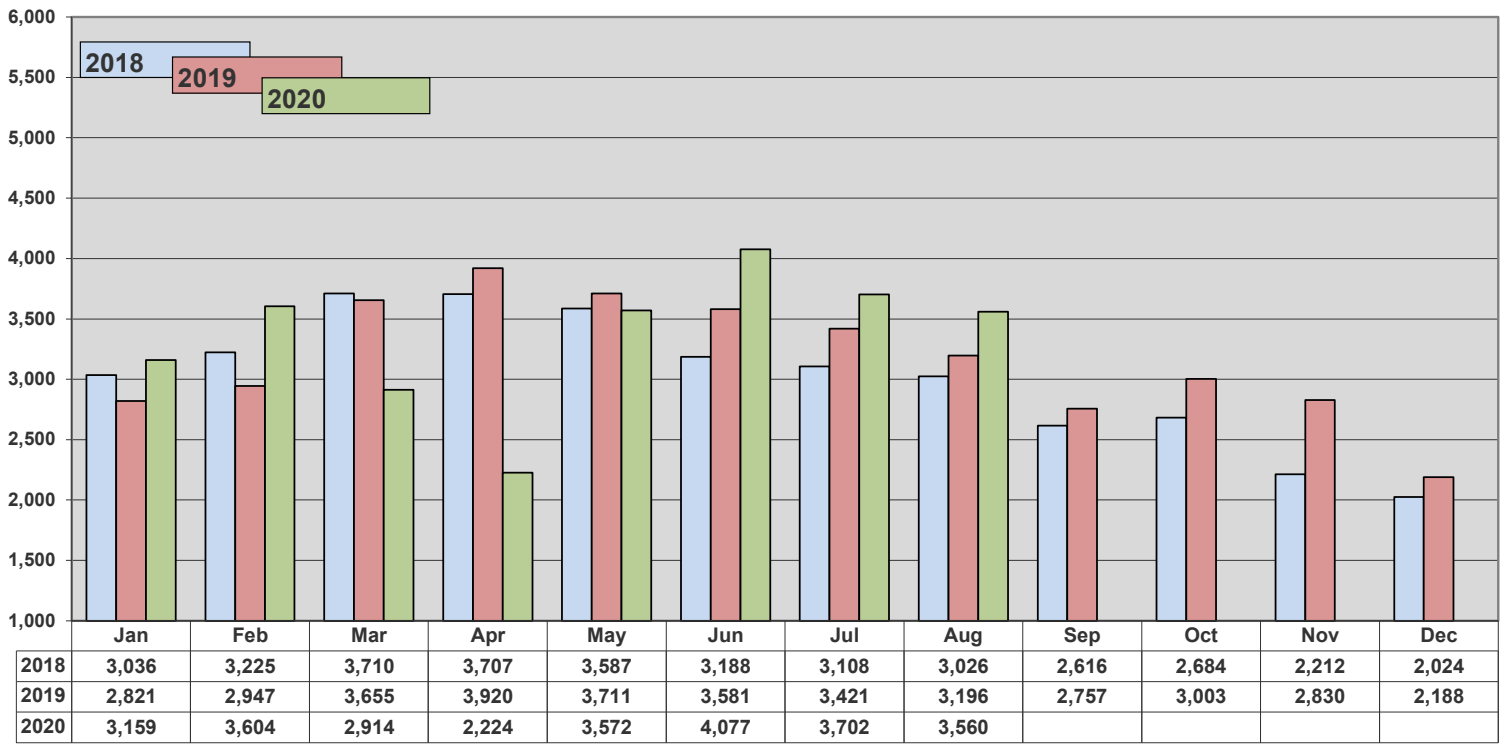


Three-year History - Inventory

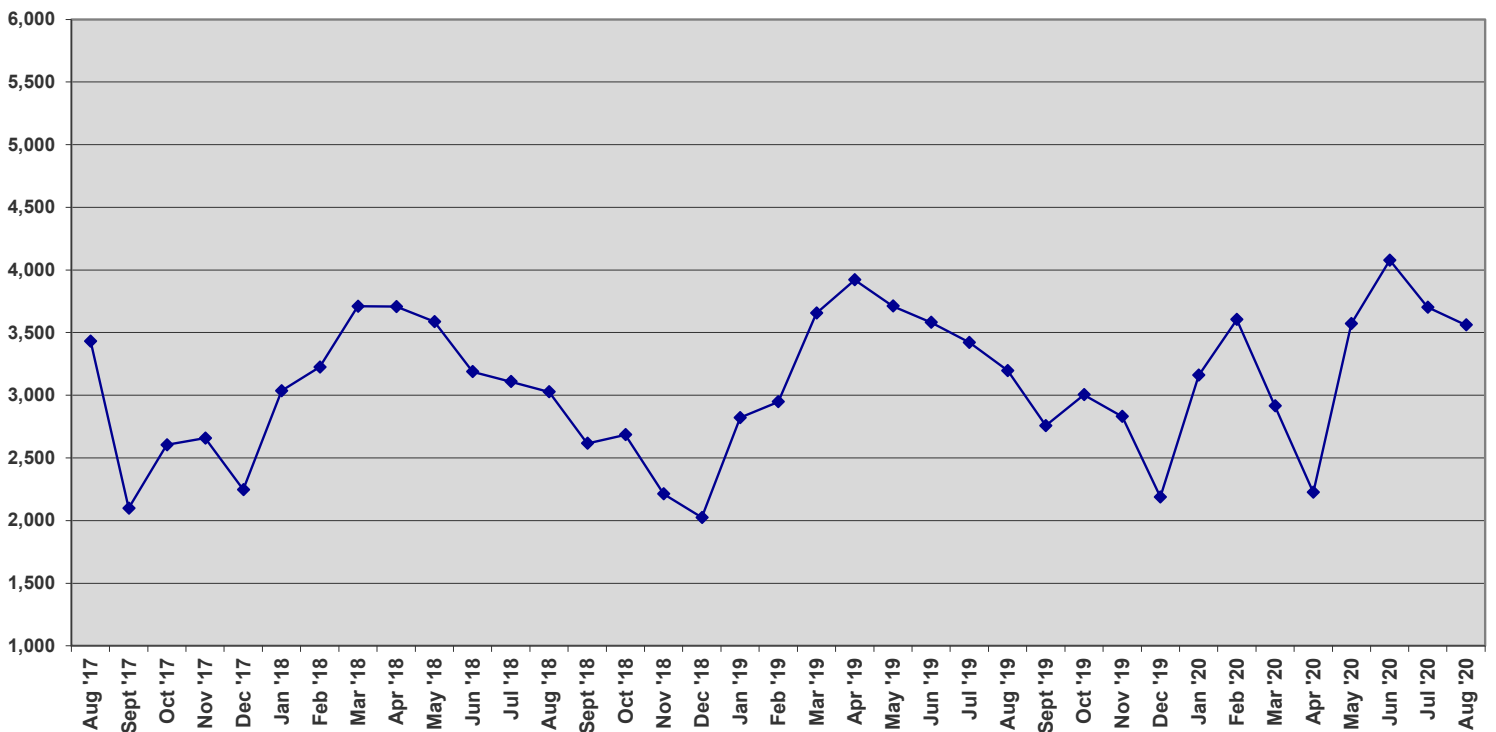




New Contracts

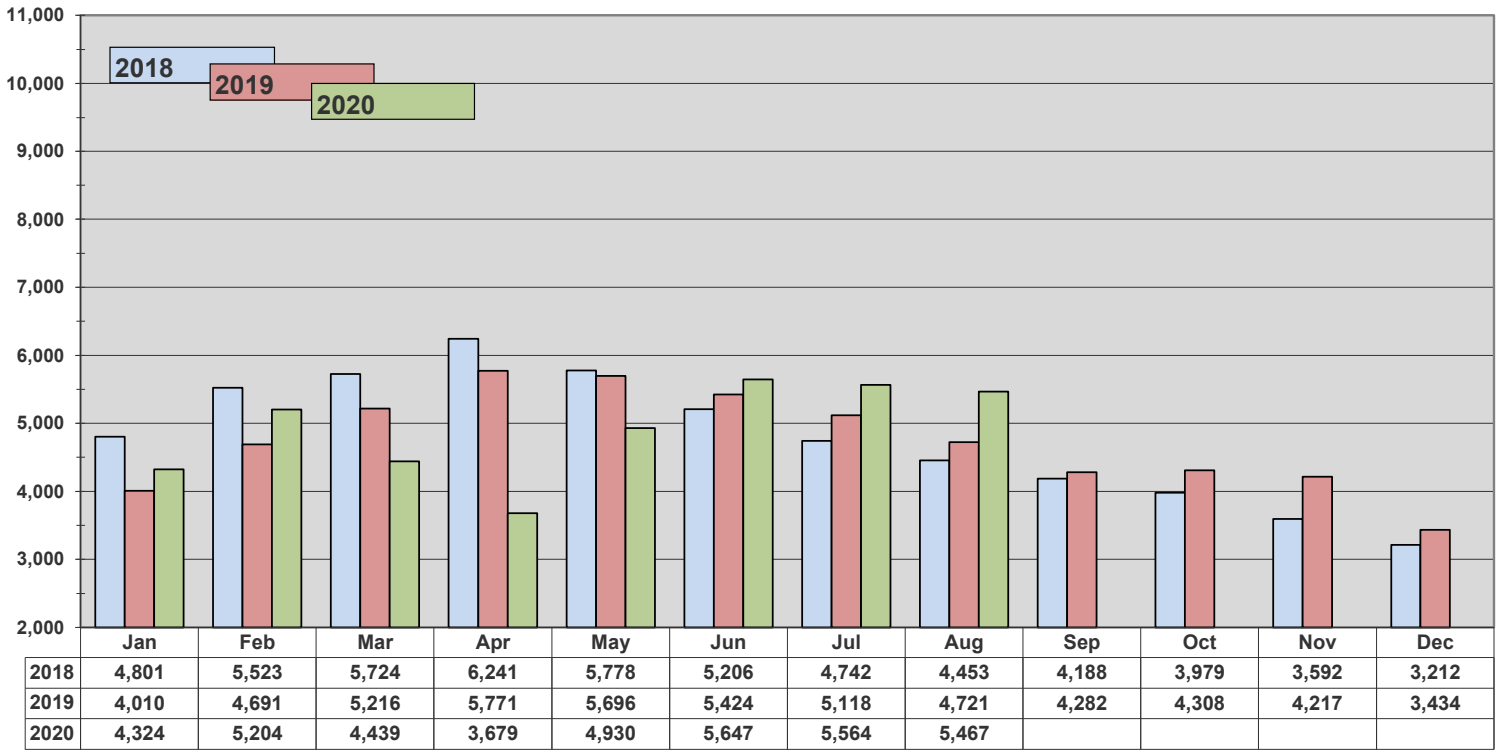


Three-year History - New Contracts

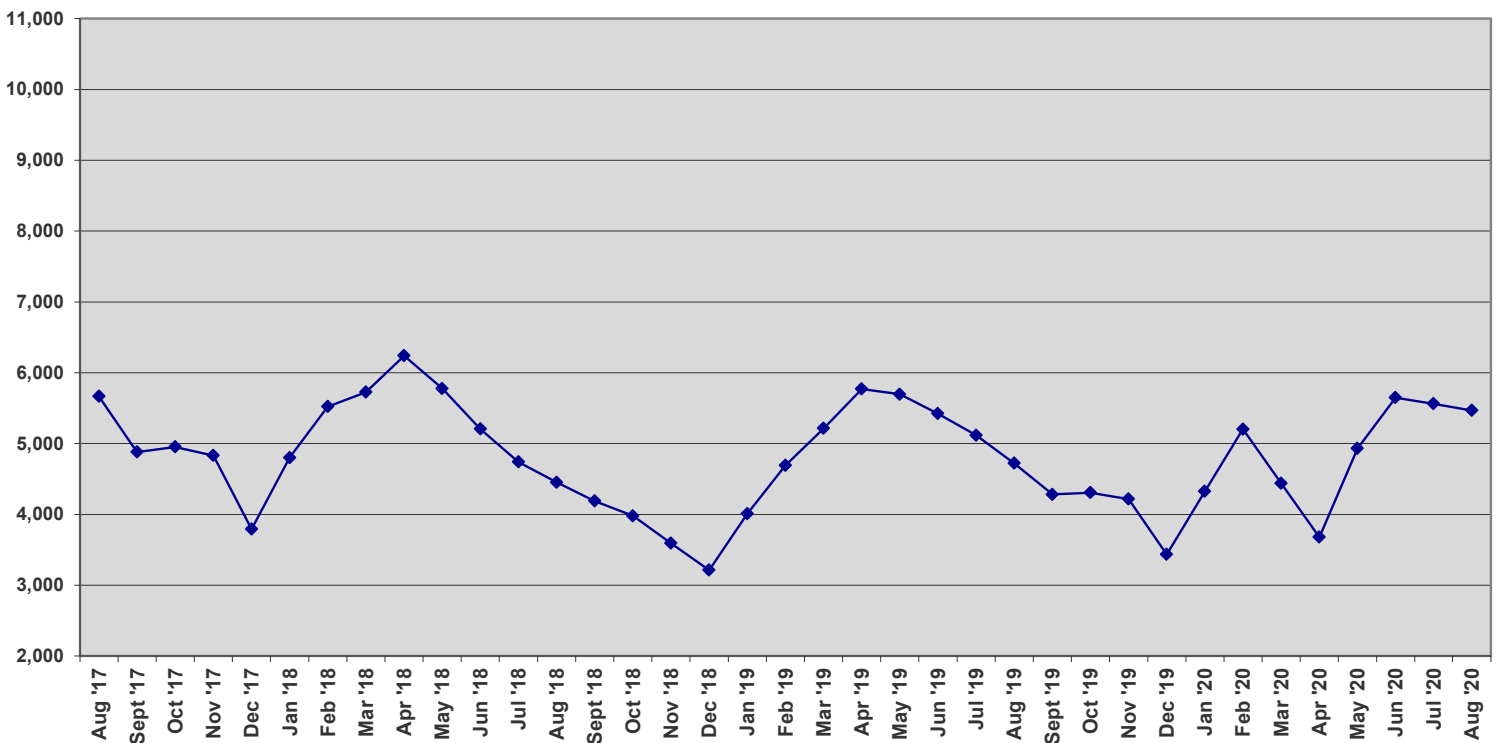




Total Under Contract

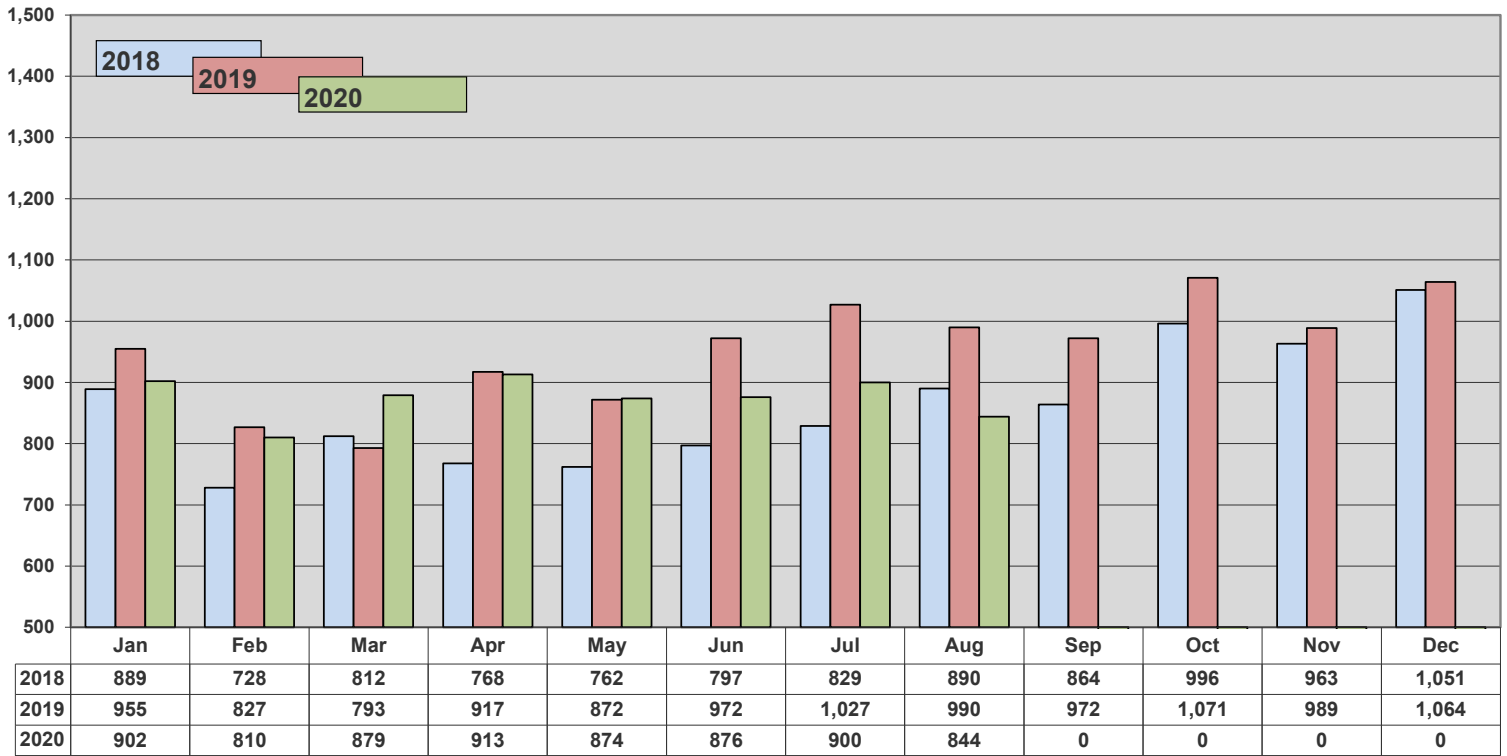


Three-year History - Monthly Total Under Contract

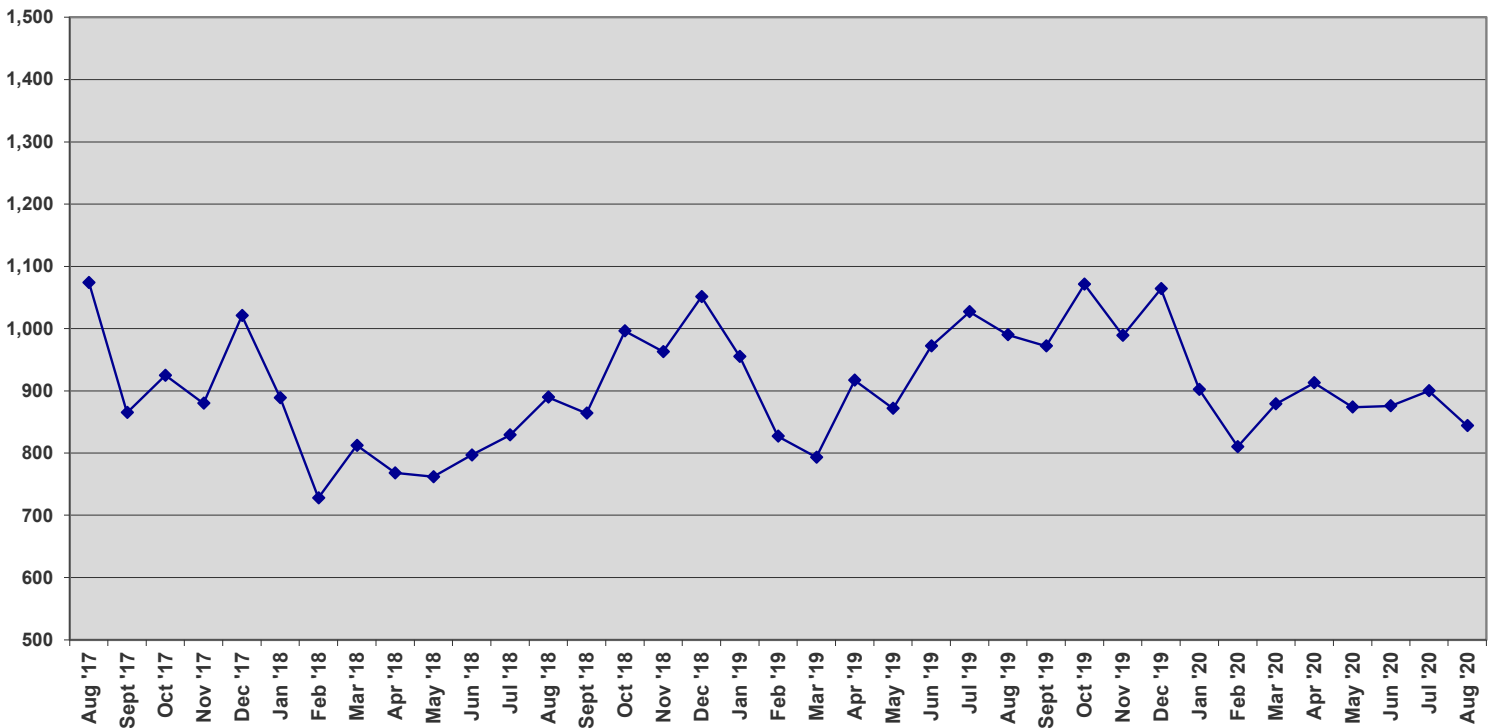




Units off the Market - Withdrawn or Expired

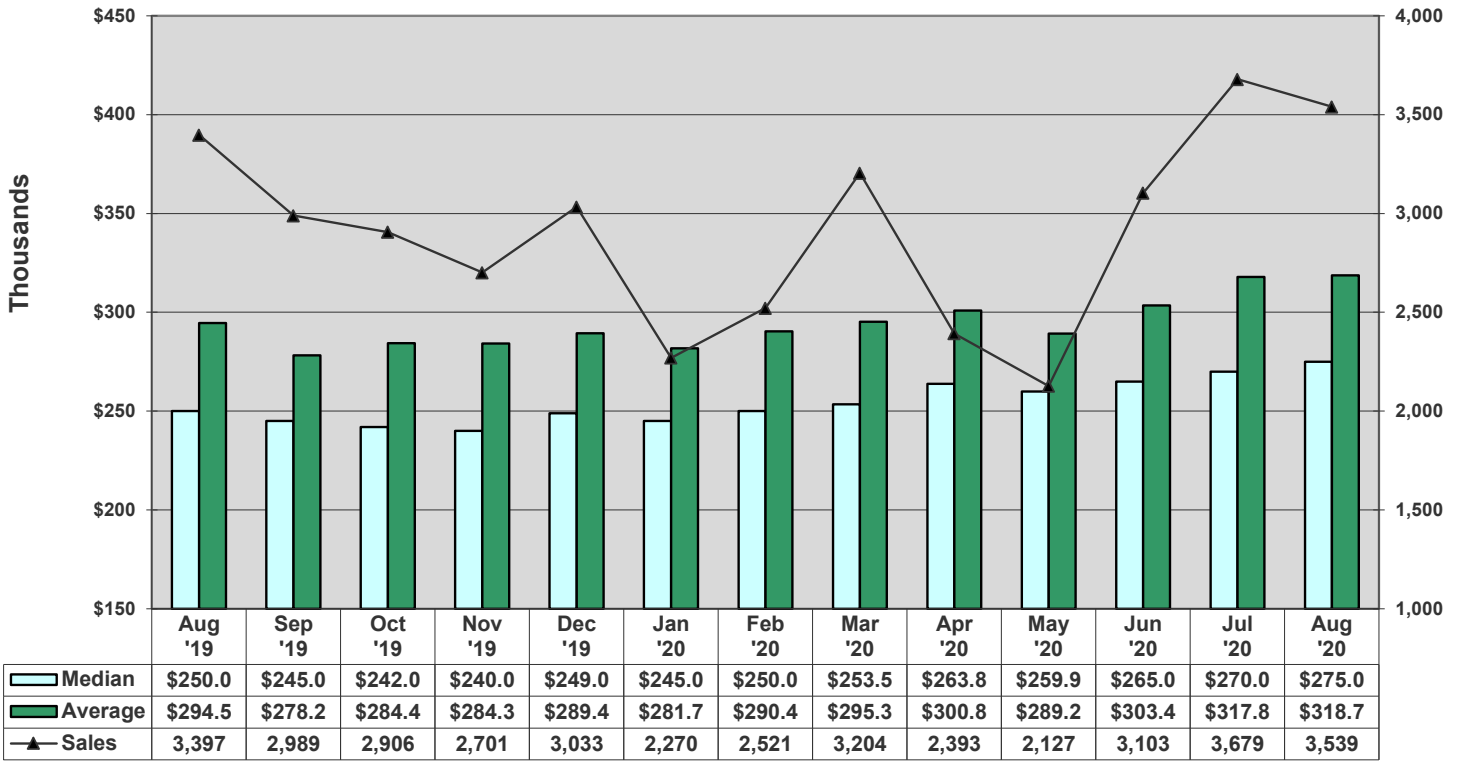


Three-year History - Units off the Market - Withdrawn or Expired

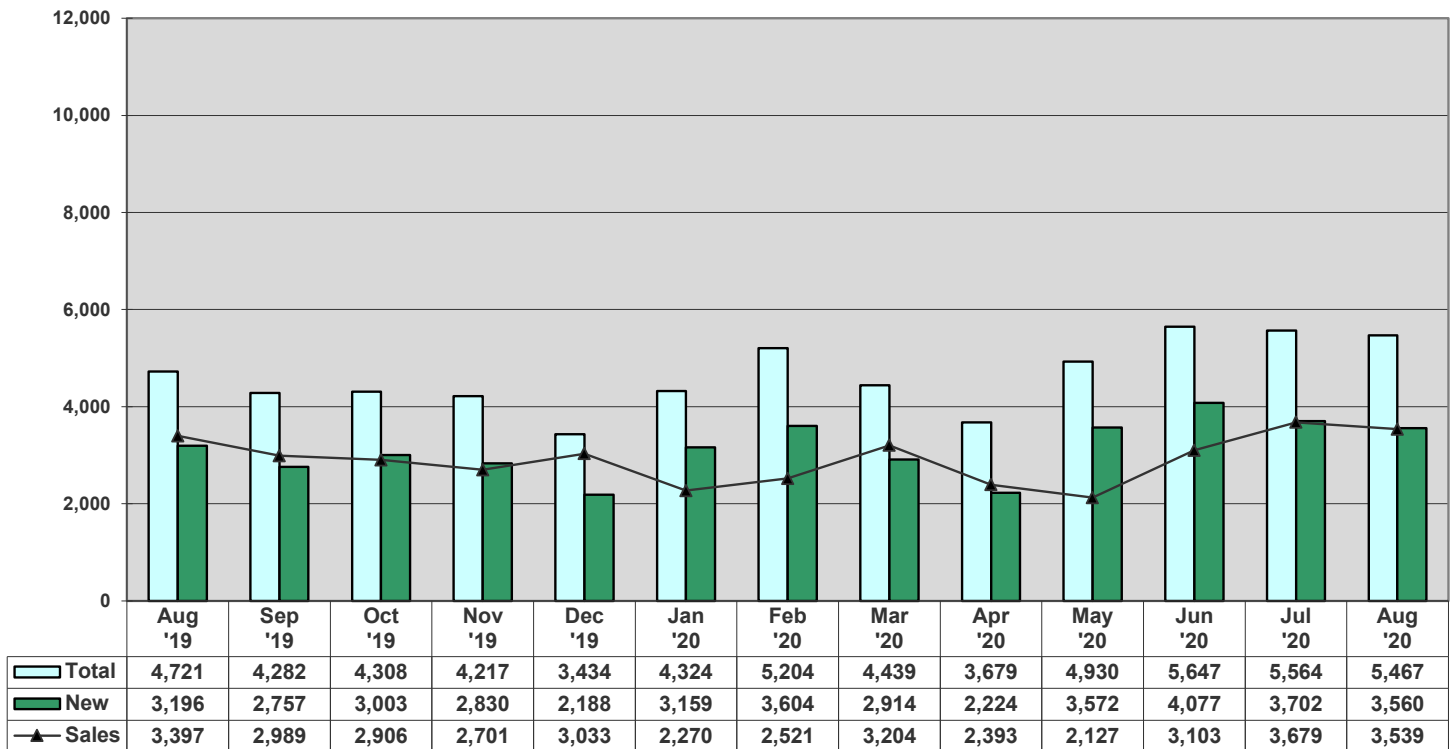




Average vs Median Sales Price vs Sales

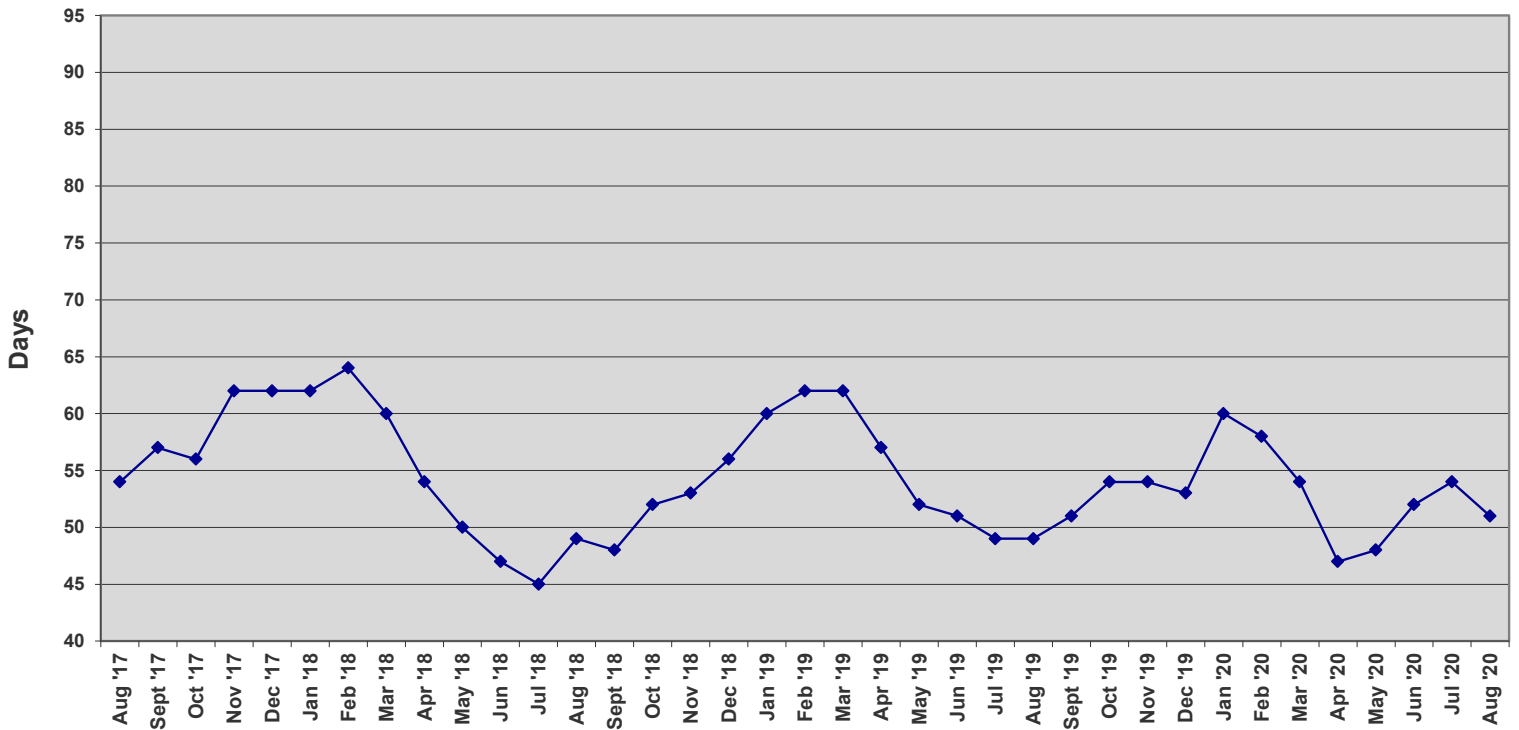


Total Contracts vs New Contracts vs Sales





Average Days on Market - Listing to Contract



Average Days - Contract to Close

