



# MARKET PULSE

November 2019



ORLANDO REGIONAL  
**REALTOR**  
ASSOCIATION

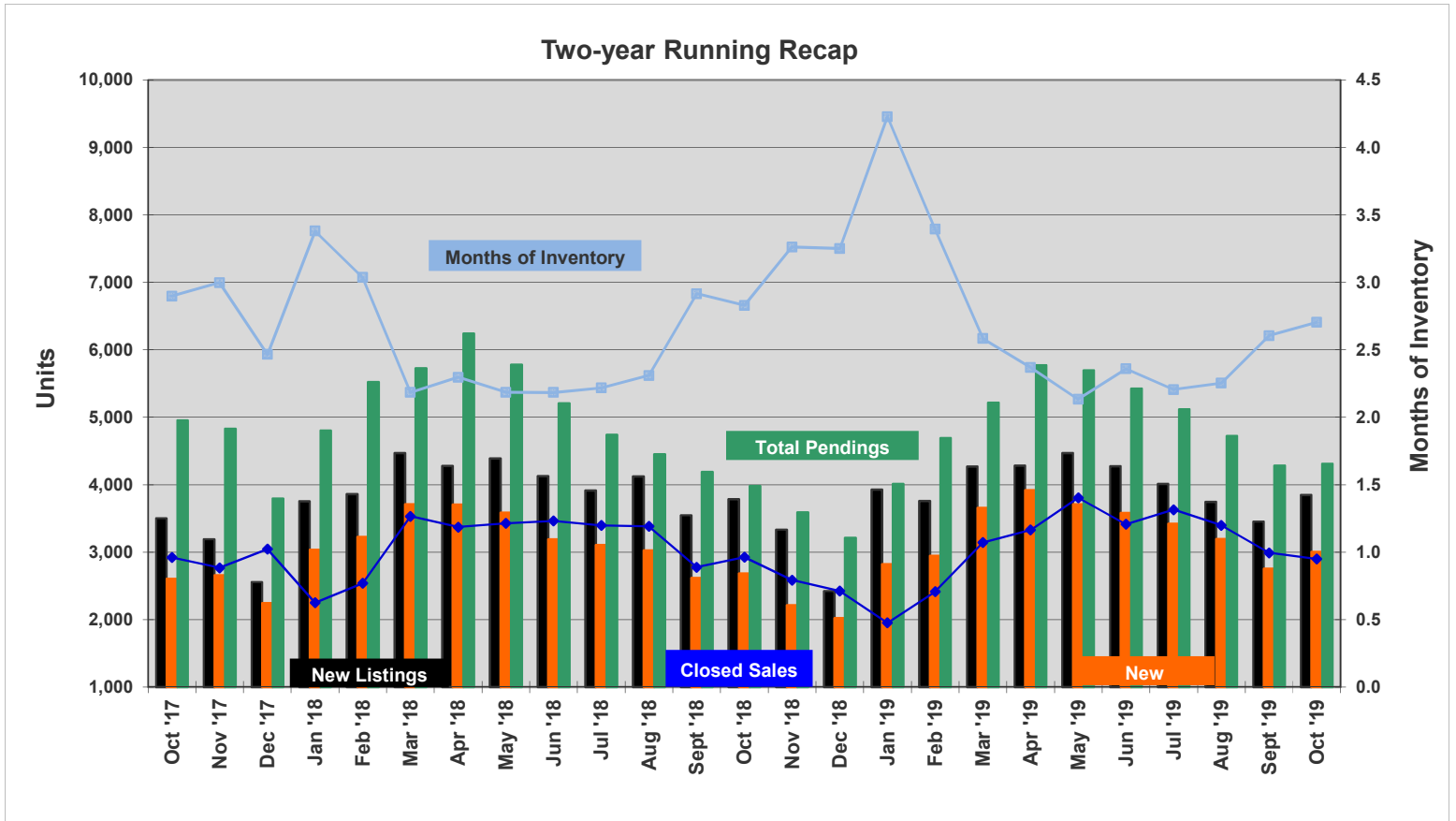


ORRA Originated Sales	Average Mtg Rate	Inventory				New Listings	New Contracts	Under Contract	Back on Market	Expired	Withdrawn	Sales Closed	Days on Market
		Total	Single Family Homes	Condos	Townhomes/Villas								
Sept '17	3.84%	8,643	6,857	1,044	742	2,534	2,098	4,881	409	268	597	2,552	57 *
<b>Oct '17</b>	<b>4.03%</b>	<b>8,464</b>	<b>6,709</b>	<b>1,049</b>	<b>706</b>	<b>3,499</b>	<b>2,604</b>	<b>4,953</b>	<b>394</b>	<b>175</b>	<b>750</b>	<b>2,921</b>	<b>56 *</b>
Nov '17	3.96%	8,294	6,540	1,043	711	3,189	2,658	4,829	365	166	714	2,767	62 *
Dec '17	3.97%	7,508	5,915	950	643	2,554	2,246	3,792	365	395	626	3,045	62 *
Jan '18	4.07%	7,604	6,010	936	658	3,752	3,036	4,801	381	256	633	2,249	62 *
Feb '18	4.39%	7,706	6,130	947	629	3,861	3,225	5,523	429	183	545	2,538	64 *
Mar '18	4.29%	7,710	6,136	959	615	4,468	3,710	5,724	427	210	602	3,530	60 *
Apr '18	4.51%	7,740	6,177	966	597	4,278	3,707	6,241	430	223	545	3,371	54 *
May '18	4.64%	7,486	6,043	915	528	4,388	3,587	5,778	481	159	603	3,426	50 *
Jun '18	4.61%	7,558	5,990	919	649	4,128	3,188	5,206	655	186	611	3,461	47 *
Jul '18	4.59%	7,525	6,038	959	528	3,914	3,108	4,742	681	186	643	3,394	45 *
Aug '18	4.57%	7,808	6,277	989	542	4,123	3,026	4,453	642	198	692	3,381	49 *
Sept '18	4.66%	8,092	6,471	1,071	550	3,546	2,616	4,188	655	217	647	2,776	48 *
<b>Oct '18</b>	<b>4.85%</b>	<b>8,272</b>	<b>6,556</b>	<b>1,121</b>	<b>595</b>	<b>3,787</b>	<b>2,684</b>	<b>3,979</b>	<b>632</b>	<b>241</b>	<b>755</b>	<b>2,924</b>	<b>52 *</b>
Nov '18	4.97%	8,432	6,669	1,163	600	3,333	2,212	3,592	580	221	742	2,585	53 *
Dec '18	4.38%	7,872	6,183	1,112	577	2,422	2,024	3,212	528	397	654	2,422	56 *
Jan '19	4.32%	8,243	6,421	1,181	641	3,927	2,821	4,010	596	240	715	1,950	60 *
Feb '19	4.34%	8,194	6,412	1,222	560	3,758	2,947	4,691	523	195	632	2,414	62 *
Mar '19	4.21%	8,117	6,406	1,177	534	4,271	3,655	5,216	656	180	613	3,142	62 *
Apr '19	4.20%	7,888	6,193	1,157	538	4,283	3,920	5,771	687	216	701	3,329	57 *
May '19	4.15%	8,119	6,382	1,154	583	4,471	3,711	5,696	732	120	752	3,806	52 *
Jun '19	3.93%	8,050	6,289	1,135	626	4,275	3,581	5,424	677	218	754	3,412	51 *
Jul '19	3.85%	7,998	6,265	1,115	618	4,012	3,421	5,118	779	218	809	3,628	49 *
Aug '19	3.72%	7,652	6,027	1,046	579	3,744	3,196	4,721	641	226	764	3,397	49 *
Sept '19	3.68%	7,784	6,102	1,049	633	3,453	2,757	4,282	654	223	749	2,989	51 *
<b>Oct '19</b>	<b>3.61%</b>	<b>7,837</b>	<b>6,140</b>	<b>1,061</b>	<b>636</b>	<b>3,846</b>	<b>3,003</b>	<b>4,308</b>	<b>693</b>	<b>247</b>	<b>824</b>	<b>2,899</b>	<b>54</b>
ORRA Originated Sales	Average Mtg Rate	Total	Single Family Homes	Condos	Townhomes/Villas	New Listings	New Contracts	Under Contract	Back on Market	Expired	Withdrawn	Sales Closed	Days on Market
<b>Inventory</b>													

\* Corrected monthly sales.

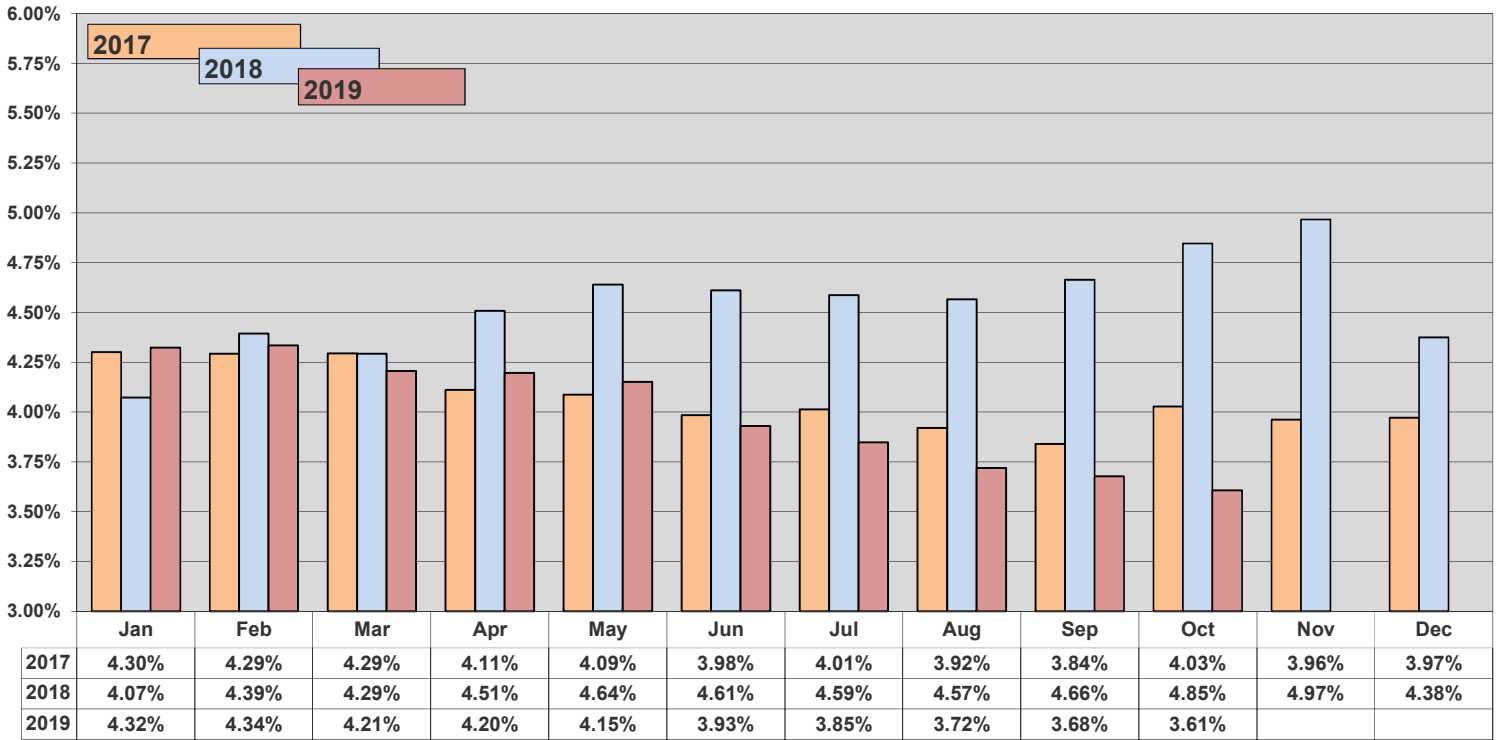
Complete stats and data may be found under Market Info at [www.orlandorealtors.org](http://www.orlandorealtors.org). Comments or suggestions? Contact Mike Blinn, Statistician.

Market Pulse™ data represents all listings taken or sold by ORRA brokers, regardless of location and is exclusive to residential property, which includes townhomes, duplexes, single-family homes, and condos. It does not include vacant land or commercial transactions.

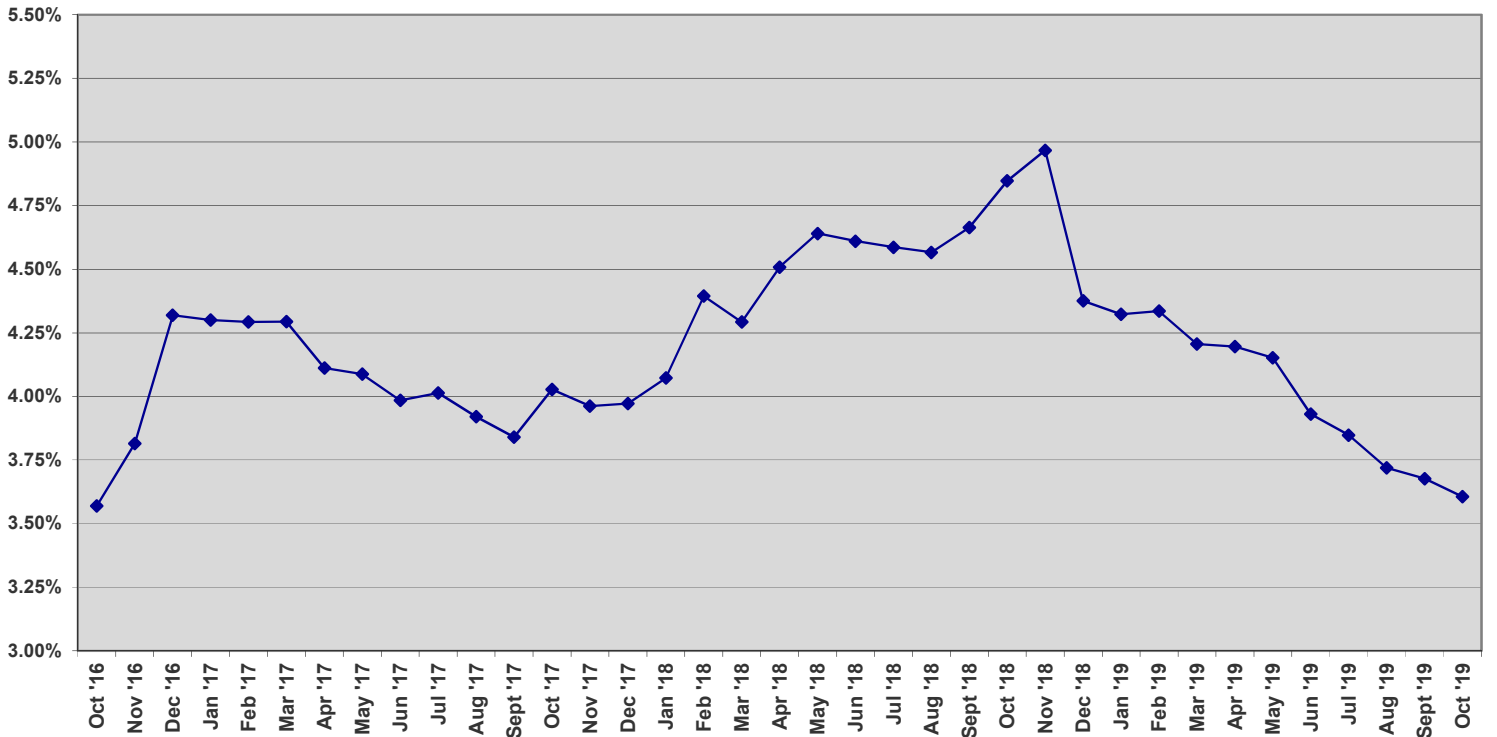




### Average Monthly Mortgage Rate

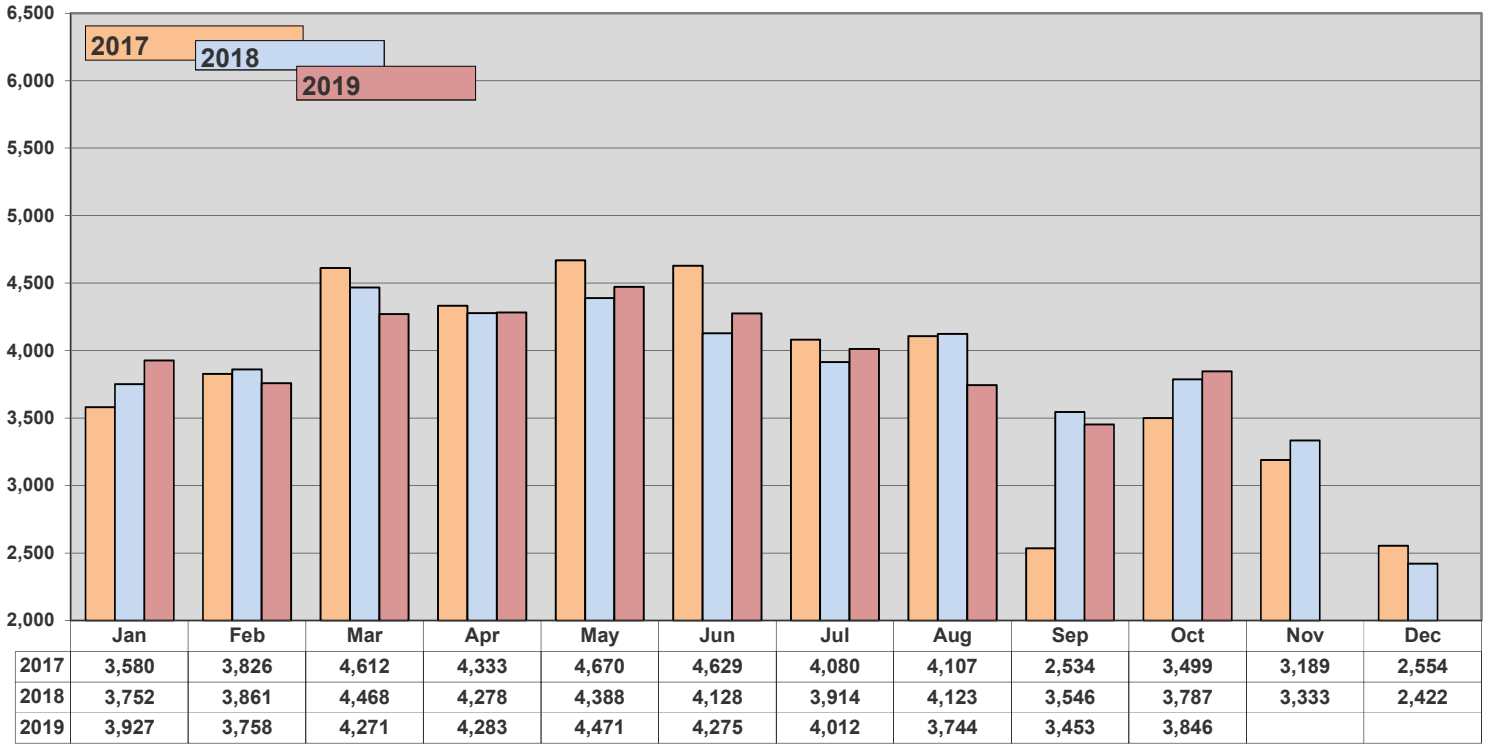


### Three-year History - Average Monthly Mortgage Rate

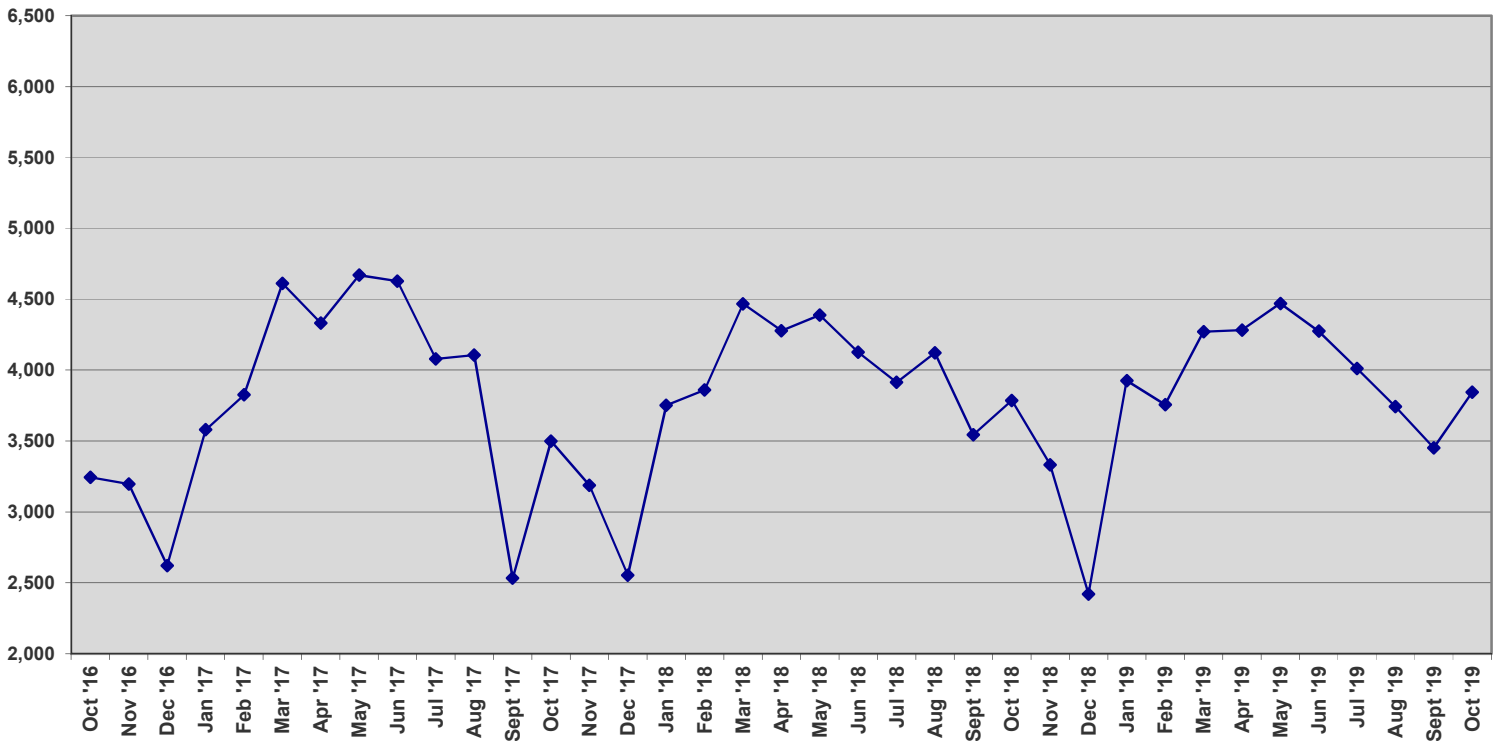




### New Listings

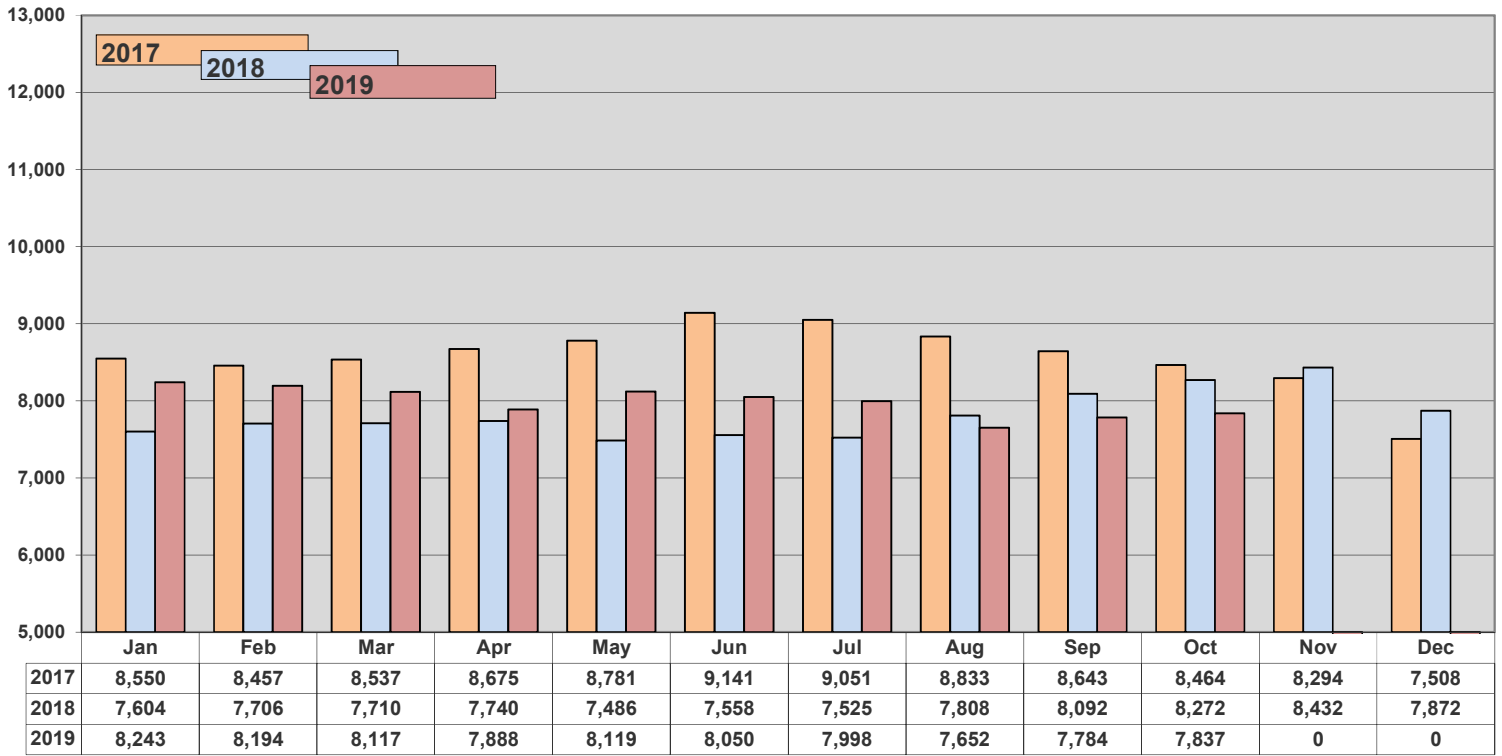


### Three-year History - New Listings

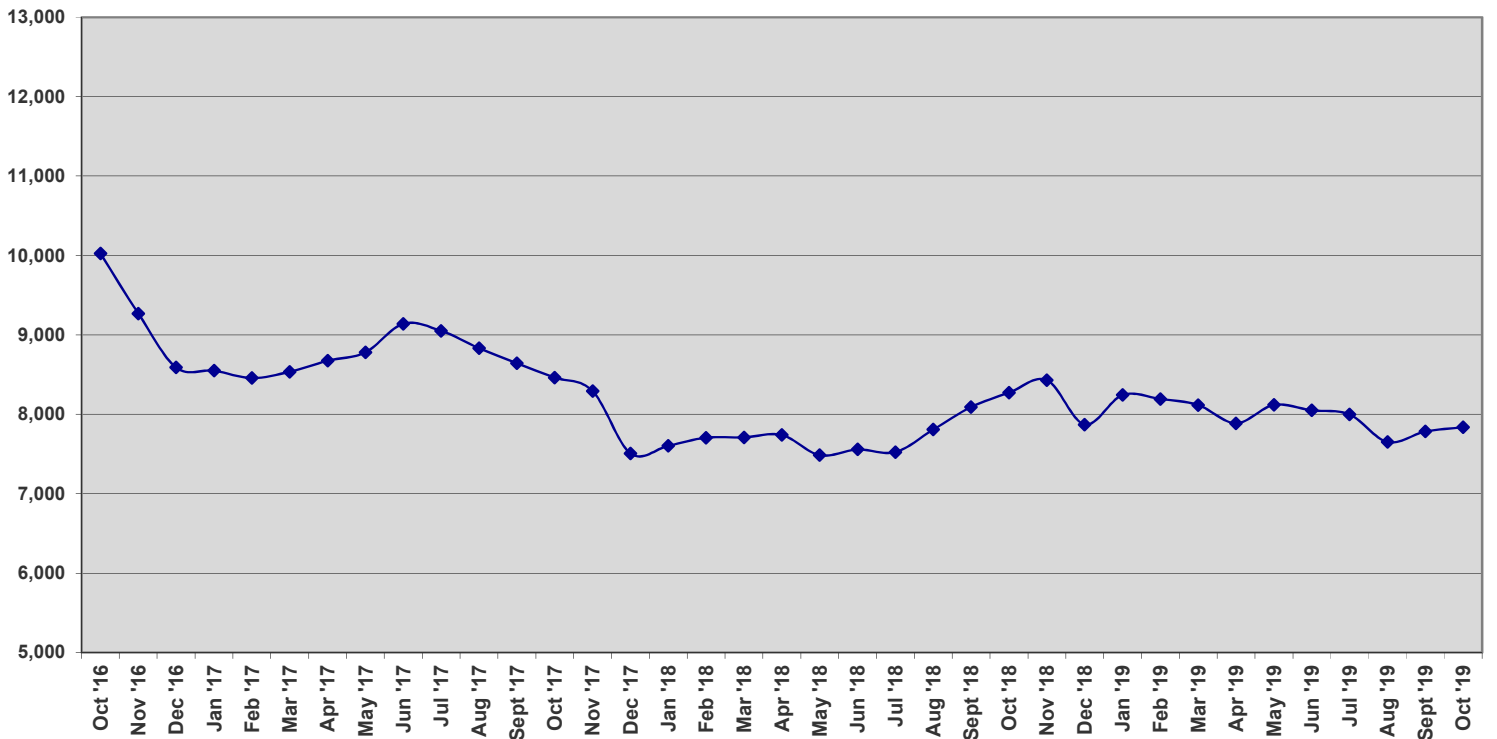




### Inventory

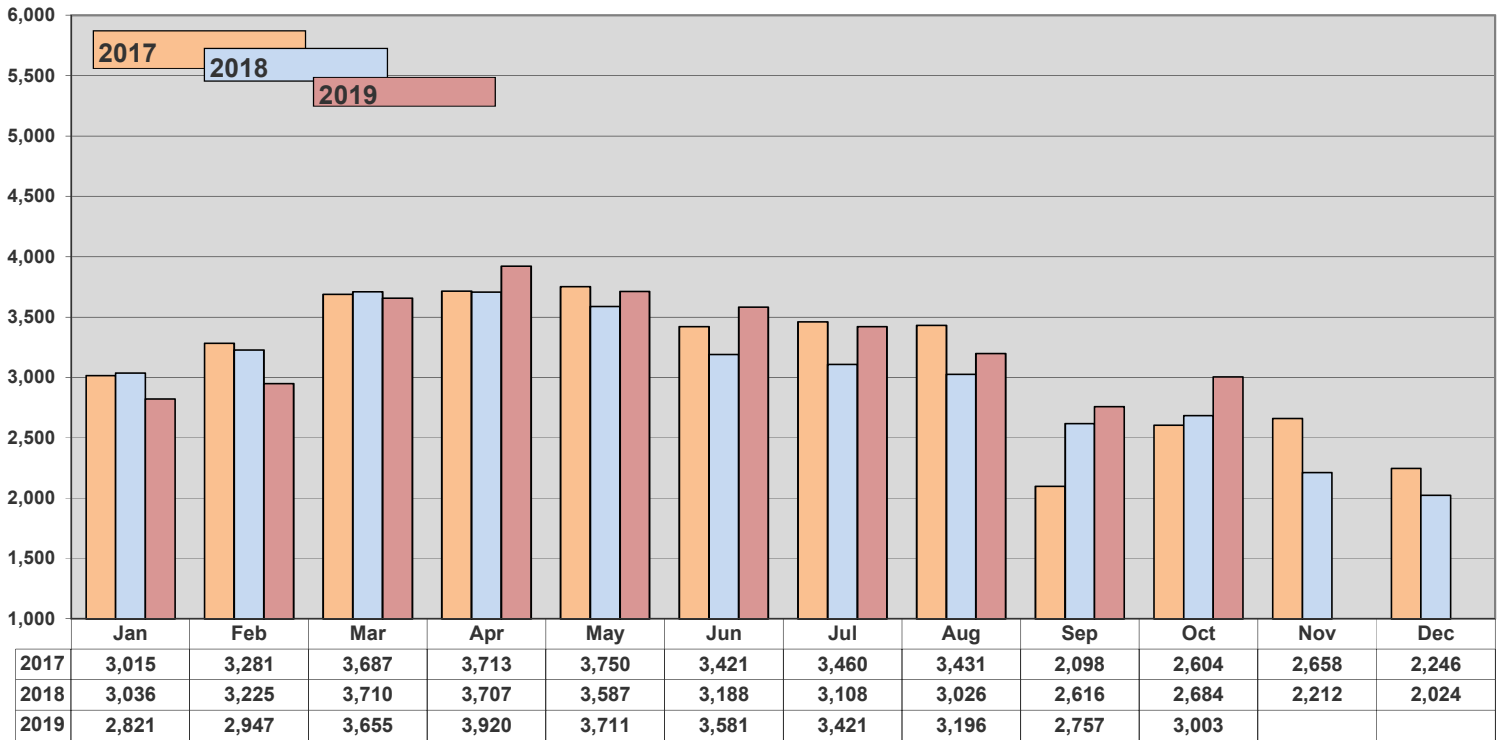


### Three-year History - Inventory

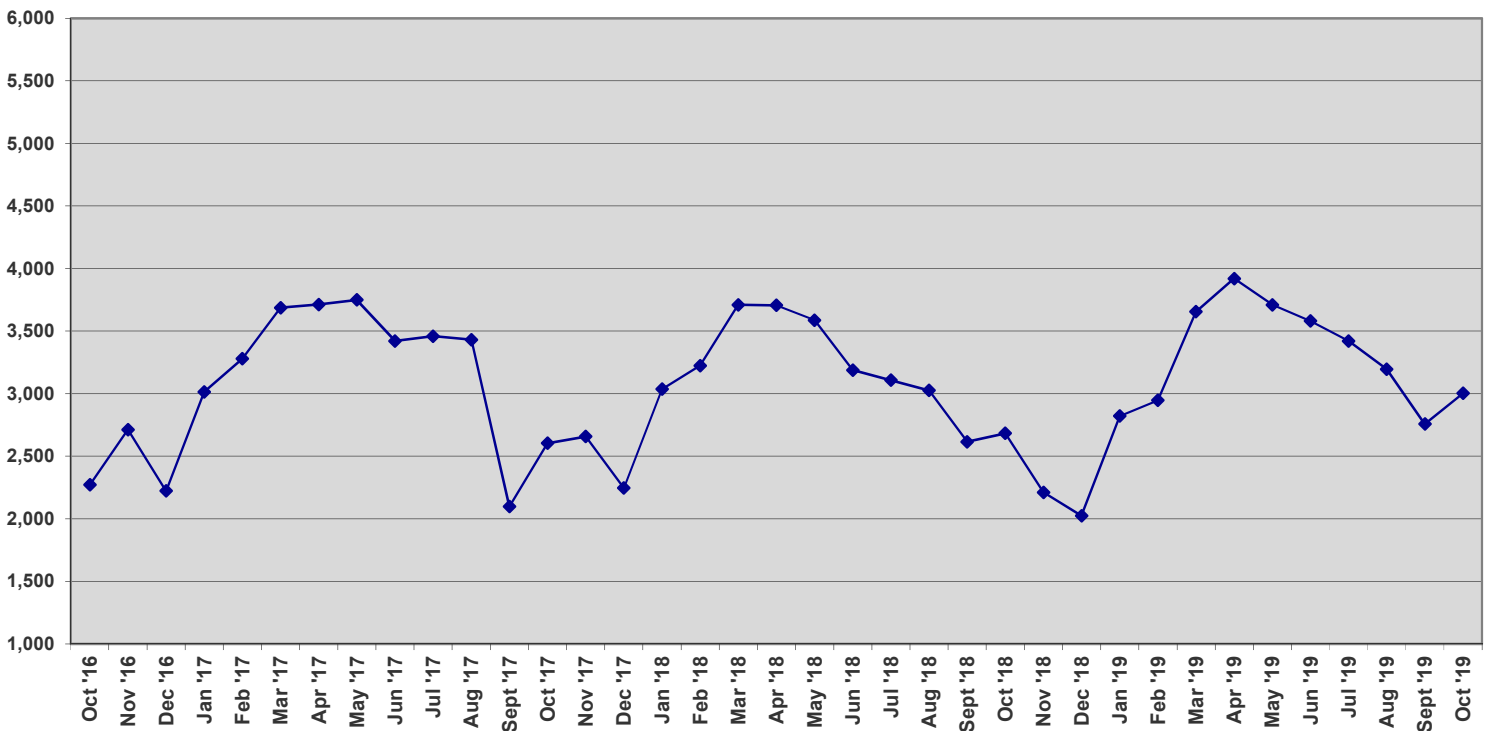




### New Contracts

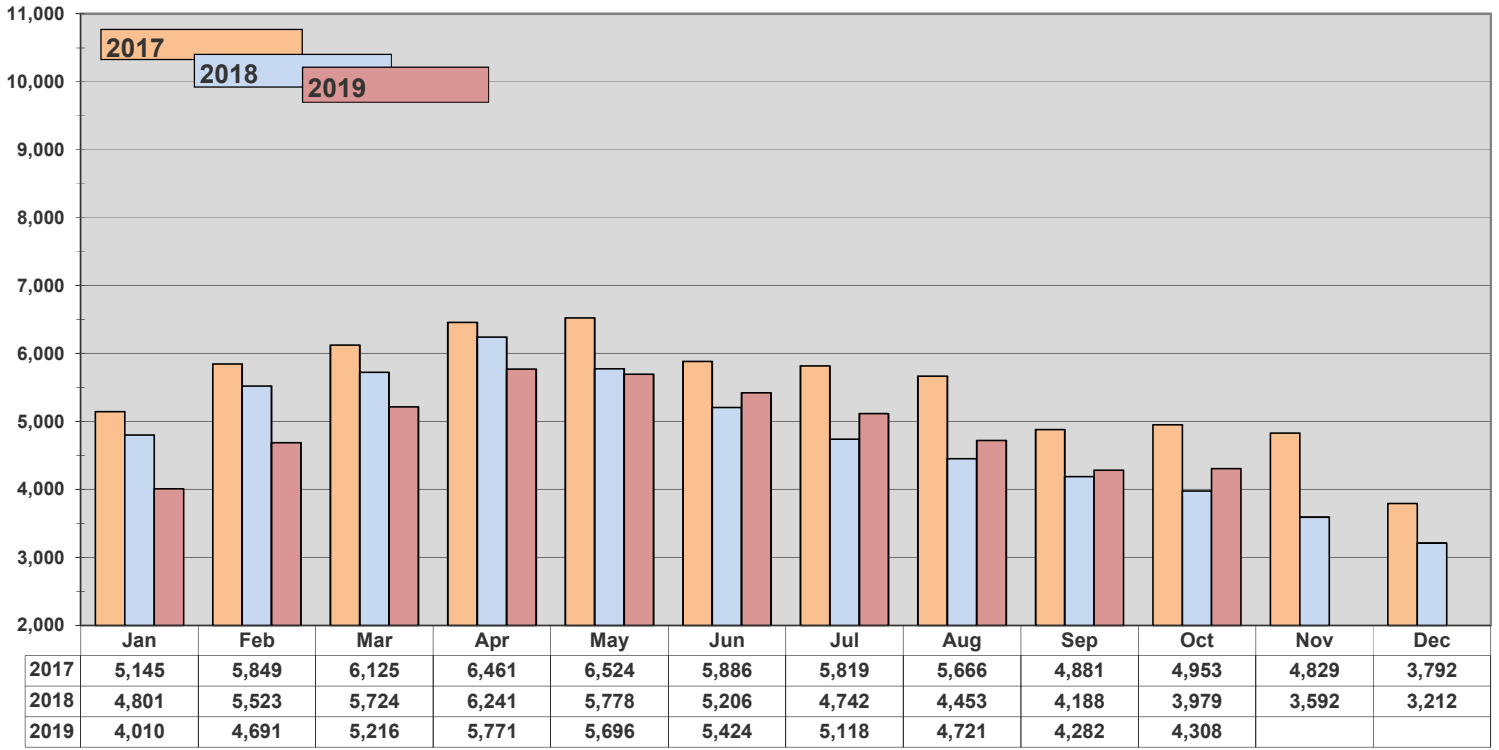


### Three-year History - New Contracts

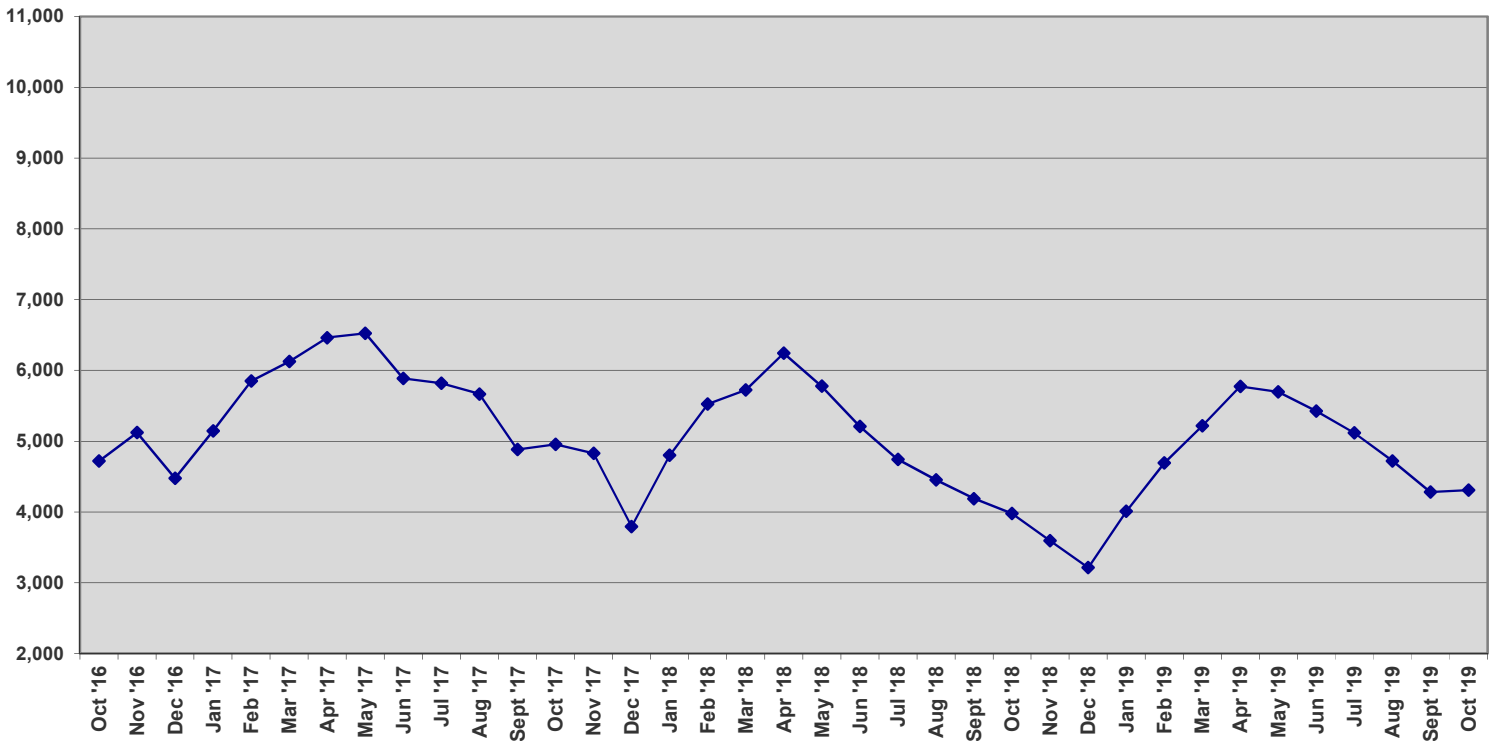




### Total Under Contract

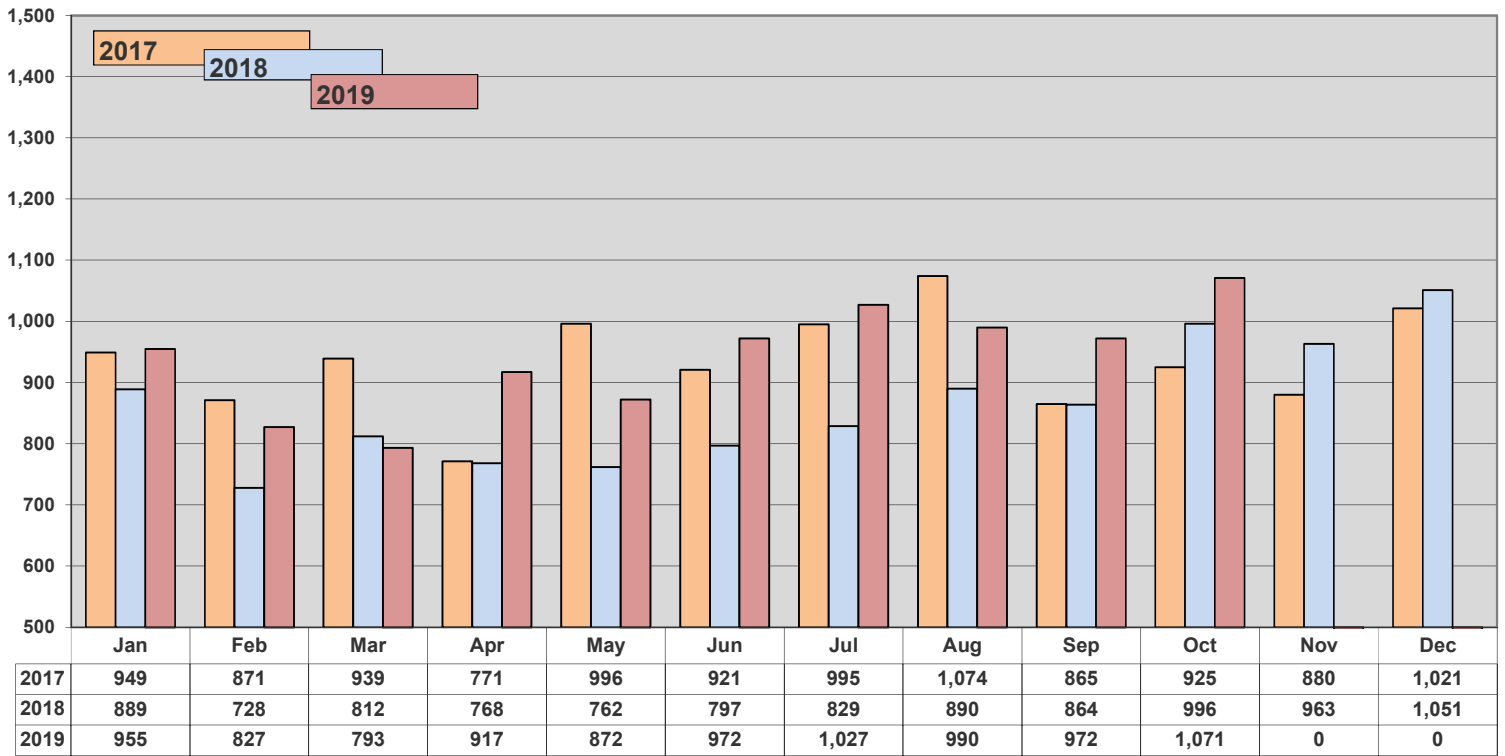


### Three-year History - Monthly Total Under Contract

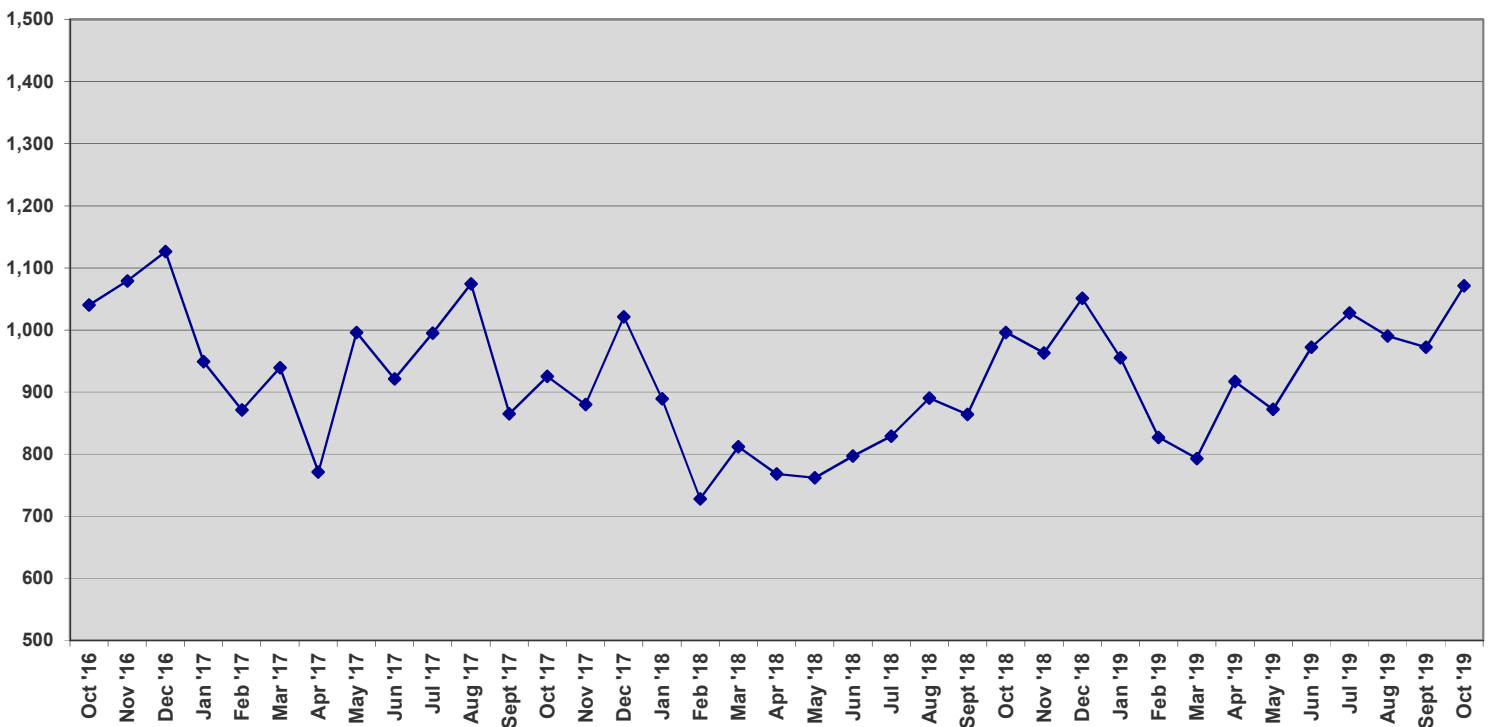




### Units off the Market - Withdrawn or Expired



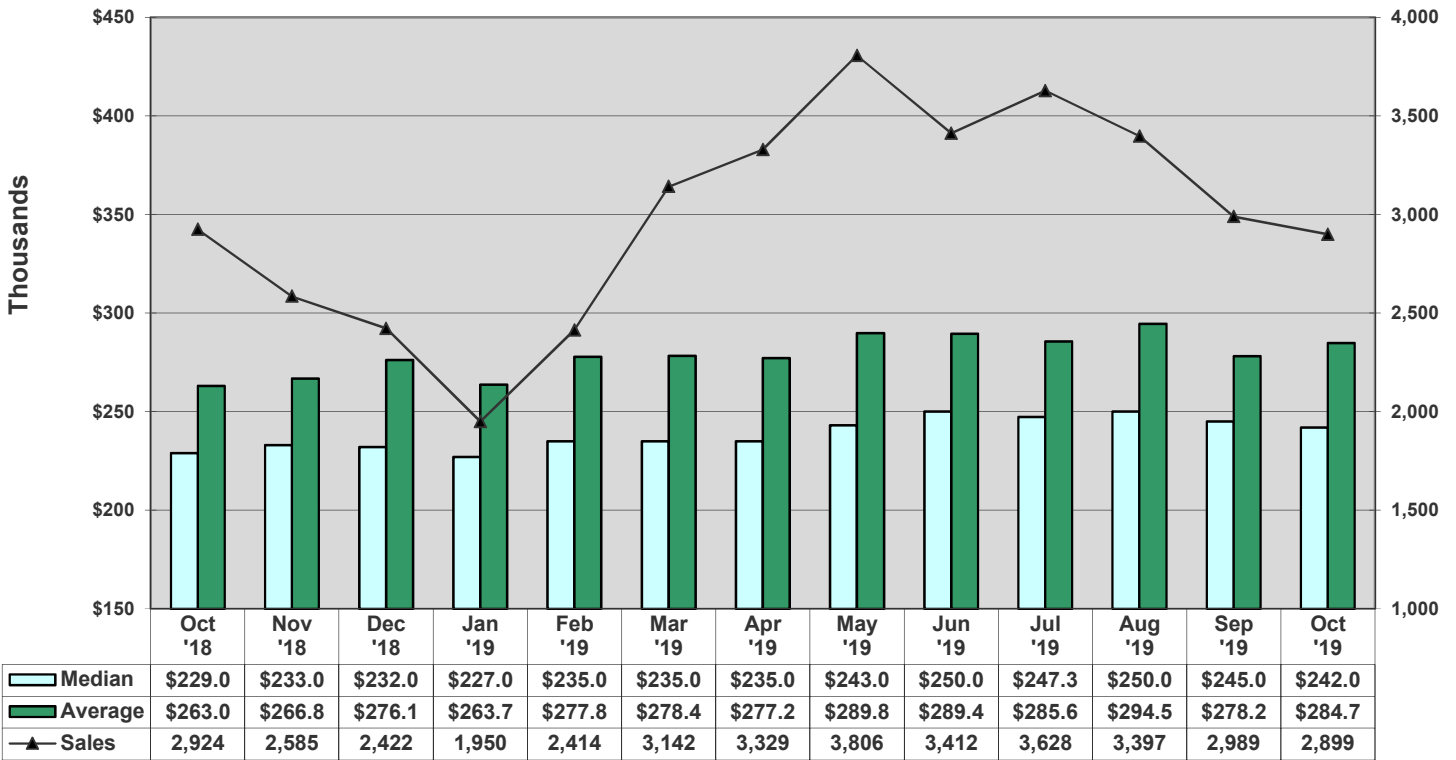
### Three-year History - Units off the Market - Withdrawn or Expired



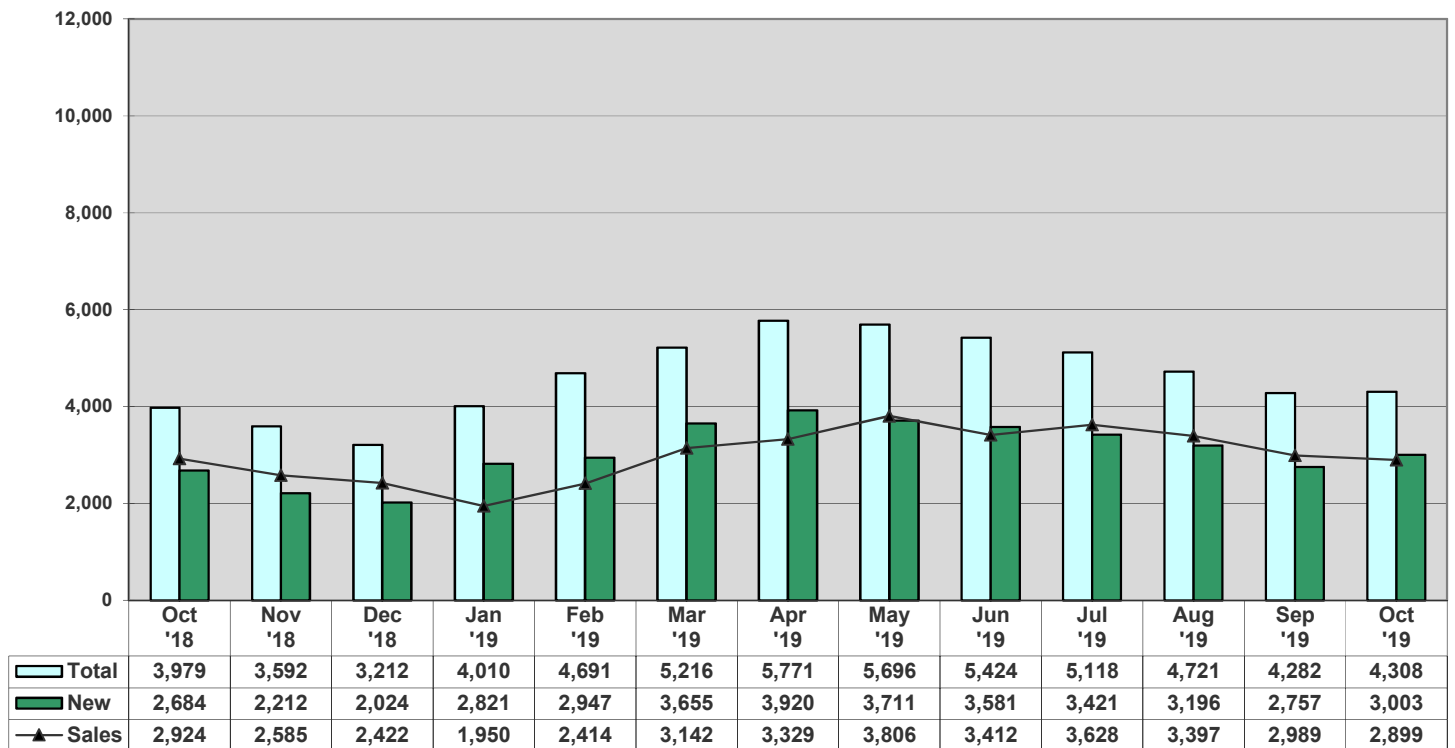




### Average vs Median Sales Price vs Sales

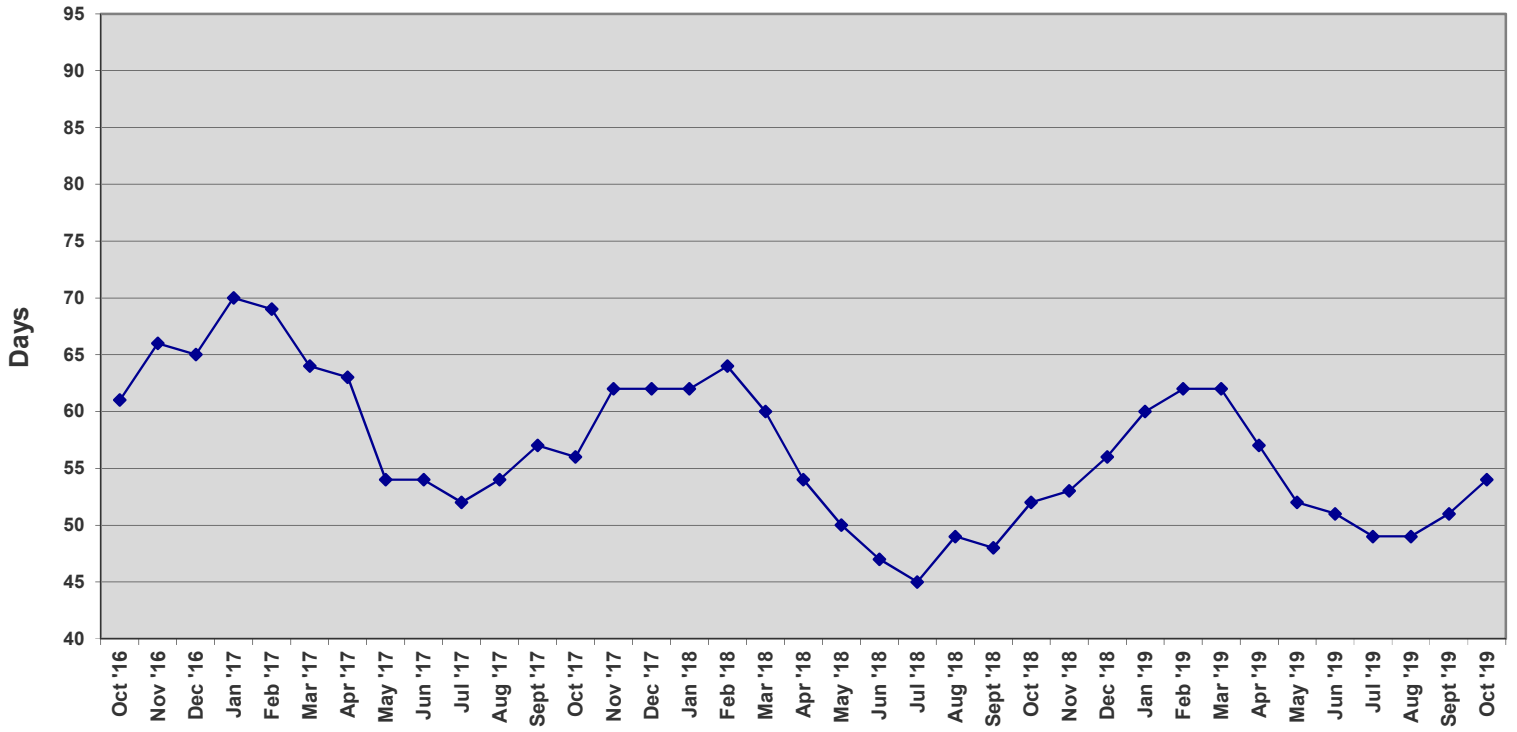


### Total Contracts vs New Contracts vs Sales





### Average Days on Market - Listing to Contract



### Average Days - Contract to Close

