



# MARKET PULSE

July 2019



ORLANDO REGIONAL  
**REALTOR**  
ASSOCIATION

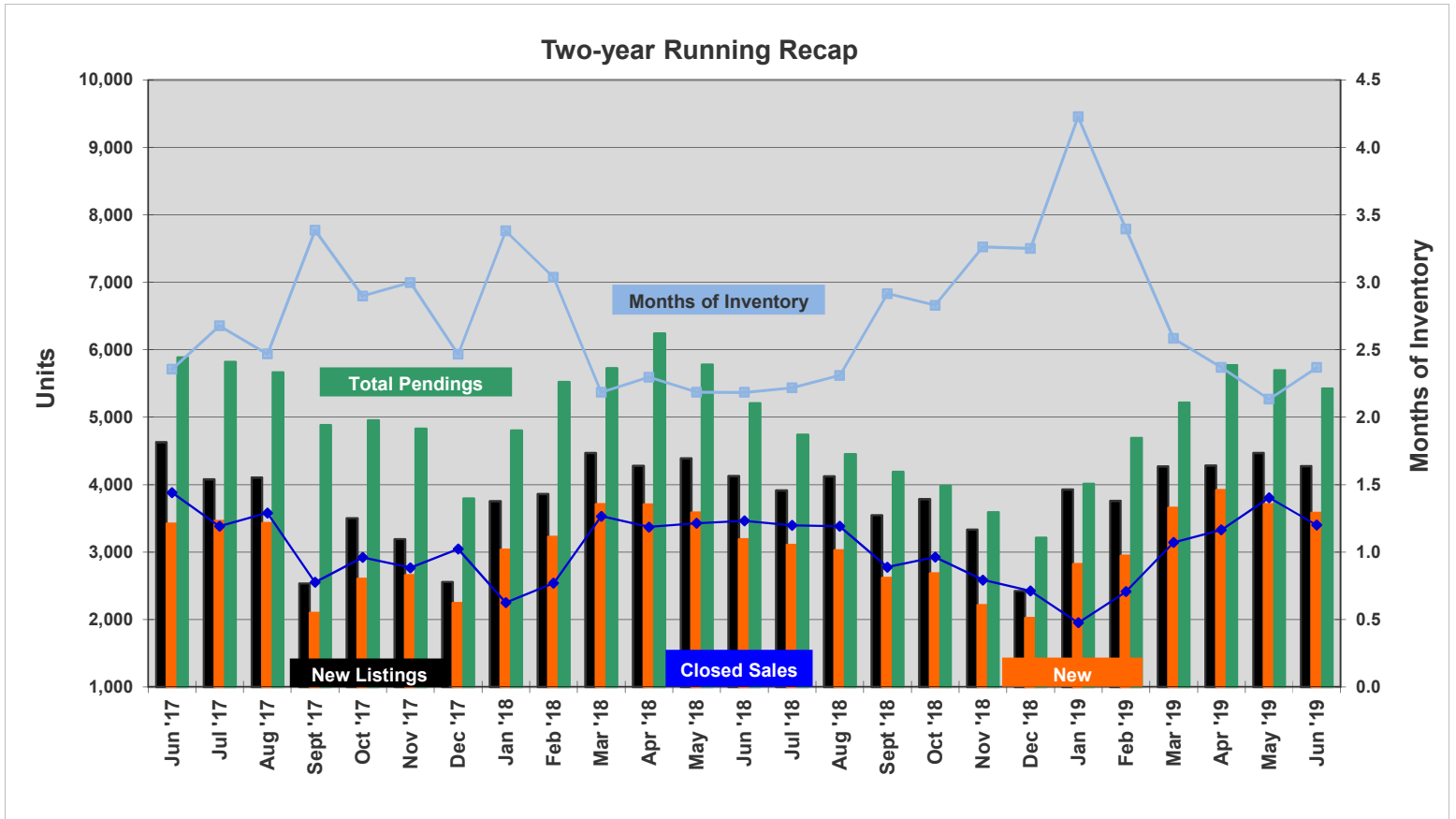


ORRA Originated Sales	Average Mtg Rate	Inventory				New Listings	New Contracts	Under Contract	Back on Market	Expired	Withdrawn	Sales Closed	Days on Market
		Total	Single Family Homes	Condos	Townhomes/Villas								
May '17	4.09%	8,781	6,755	1,227	799	4,670	3,750	6,524	475	190	806	3,845	54 *
Jun '17	<b>3.98%</b>	<b>9,141</b>	<b>7,140</b>	<b>1,188</b>	<b>813</b>	<b>4,629</b>	<b>3,421</b>	<b>5,886</b>	<b>482</b>	<b>219</b>	<b>702</b>	<b>3,882</b>	<b>54 *</b>
Jul '17	4.01%	9,051	7,130	1,126	795	4,080	3,460	5,819	521	221	774	3,381	52 *
Aug '17	3.92%	8,833	6,993	1,081	759	4,107	3,431	5,666	492	248	826	3,580	54 *
Sept '17	3.84%	8,643	6,857	1,044	742	2,534	2,098	4,881	409	268	597	2,552	57 *
Oct '17	4.03%	8,464	6,709	1,049	706	3,499	2,604	4,953	394	175	750	2,921	56 *
Nov '17	3.96%	8,294	6,540	1,043	711	3,189	2,658	4,829	365	166	714	2,767	62 *
Dec '17	3.97%	7,508	5,915	950	643	2,554	2,246	3,792	365	395	626	3,045	62 *
Jan '18	4.07%	7,604	6,010	936	658	3,752	3,036	4,801	381	256	633	2,249	62 *
Feb '18	4.39%	7,706	6,130	947	629	3,861	3,225	5,523	429	183	545	2,538	64 *
Mar '18	4.29%	7,710	6,136	959	615	4,468	3,710	5,724	427	210	602	3,530	60 *
Apr '18	4.51%	7,740	6,177	966	597	4,278	3,707	6,241	430	223	545	3,371	54 *
May '18	4.64%	7,486	6,043	915	528	4,388	3,587	5,778	481	159	603	3,426	50 *
Jun '18	<b>4.61%</b>	<b>7,558</b>	<b>5,990</b>	<b>919</b>	<b>649</b>	<b>4,128</b>	<b>3,188</b>	<b>5,206</b>	<b>655</b>	<b>186</b>	<b>611</b>	<b>3,461</b>	<b>47 *</b>
Jul '18	4.59%	7,525	6,038	959	528	3,914	3,108	4,742	681	186	643	3,394	45 *
Aug '18	4.57%	7,808	6,277	989	542	4,123	3,026	4,453	642	198	692	3,381	49 *
Sept '18	4.66%	8,092	6,471	1,071	550	3,546	2,616	4,188	655	217	647	2,776	48 *
Oct '18	4.85%	8,272	6,556	1,121	595	3,787	2,684	3,979	632	241	755	2,924	52 *
Nov '18	4.97%	8,432	6,669	1,163	600	3,333	2,212	3,592	580	221	742	2,585	53 *
Dec '18	4.38%	7,872	6,183	1,112	577	2,422	2,024	3,212	528	397	654	2,422	56 *
Jan '19	4.32%	8,243	6,421	1,181	641	3,927	2,821	4,010	596	240	715	1,950	60 *
Feb '19	4.34%	8,194	6,412	1,222	560	3,758	2,947	4,691	523	195	632	2,414	62 *
Mar '19	4.21%	8,117	6,406	1,177	534	4,271	3,655	5,216	656	180	613	3,142	62 *
Apr '19	4.20%	7,888	6,193	1,157	538	4,283	3,920	5,771	687	216	701	3,329	57 *
May '19	4.15%	8,119	6,382	1,154	583	4,471	3,711	5,696	732	120	752	3,806	52 *
Jun '19	<b>3.93%</b>	<b>8,050</b>	<b>6,289</b>	<b>1,135</b>	<b>626</b>	<b>4,275</b>	<b>3,581</b>	<b>5,424</b>	<b>677</b>	<b>218</b>	<b>754</b>	<b>3,399</b>	<b>51</b>
ORRA Originated Sales	Average Mtg Rate	Total	Single Family Homes	Condos	Townhomes/Villas	New Listings	New Contracts	Under Contract	Back on Market	Expired	Withdrawn	Sales Closed	Days on Market
		Inventory											

\* Corrected monthly sales.

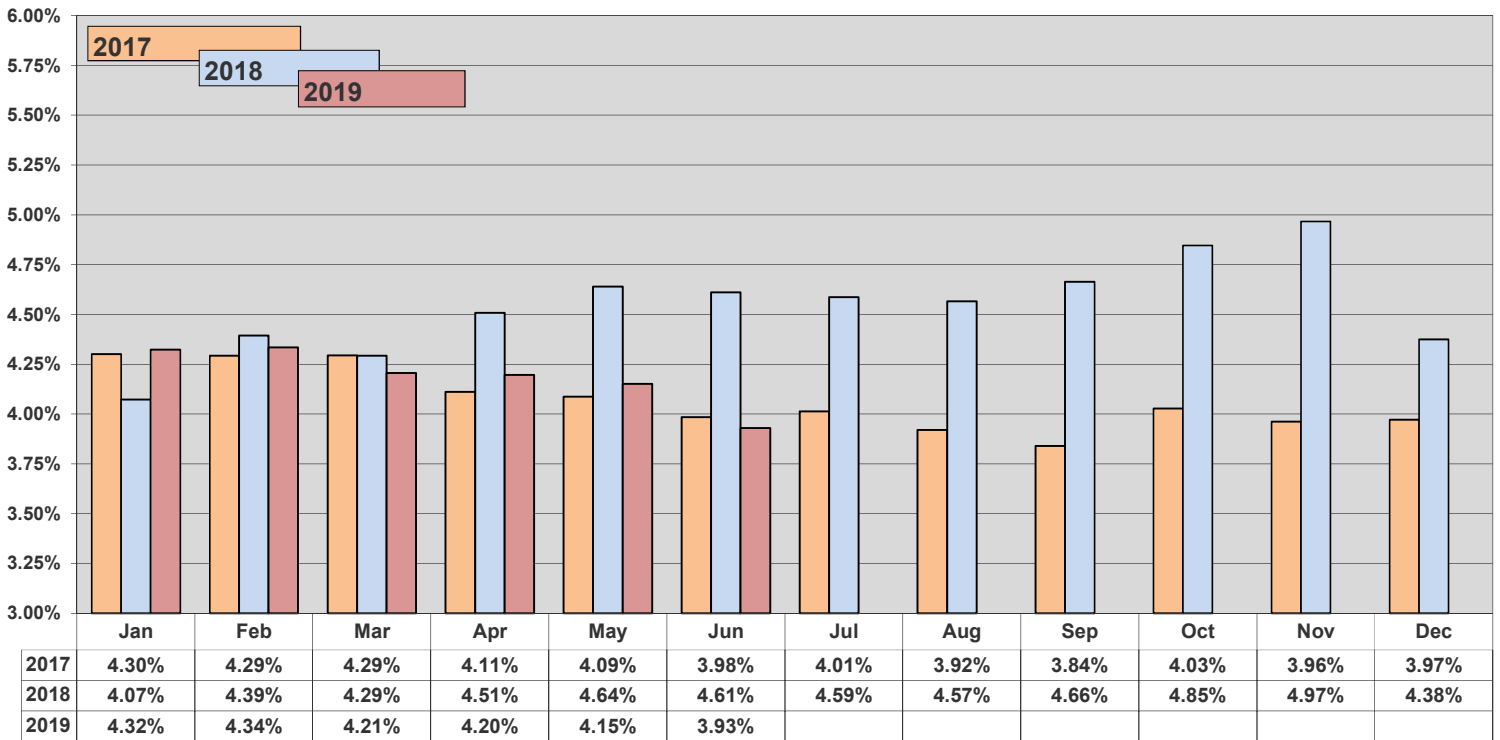
Complete stats and data may be found under Market Info at [www.orlandorealtors.org](http://www.orlandorealtors.org). Comments or suggestions? Contact Mike Blinn, Statistician.

Market Pulse™ data represents all listings taken or sold by ORRA brokers, regardless of location and is exclusive to residential property, which includes townhomes, duplexes, single-family homes, and condos. It does not include vacant land or commercial transactions.

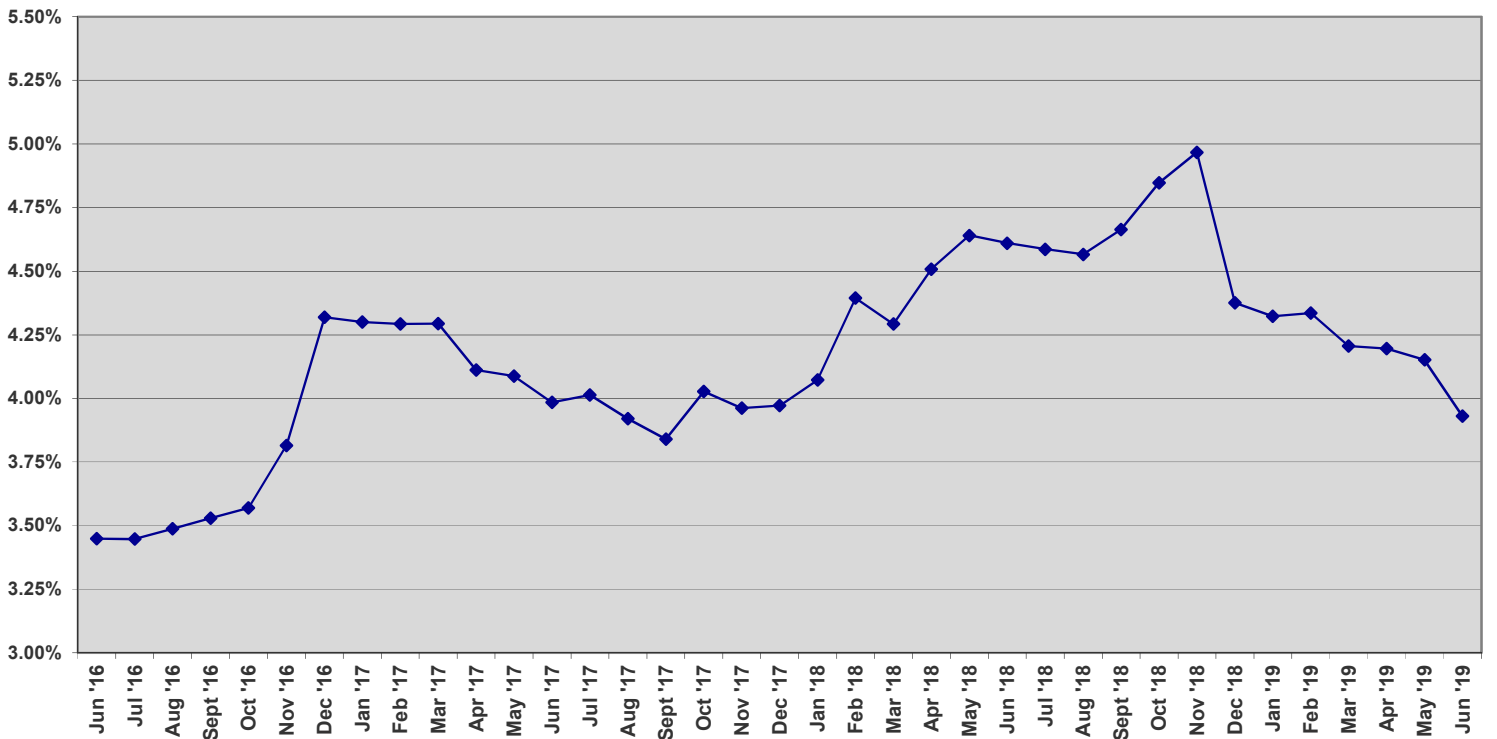




### Average Monthly Mortgage Rate

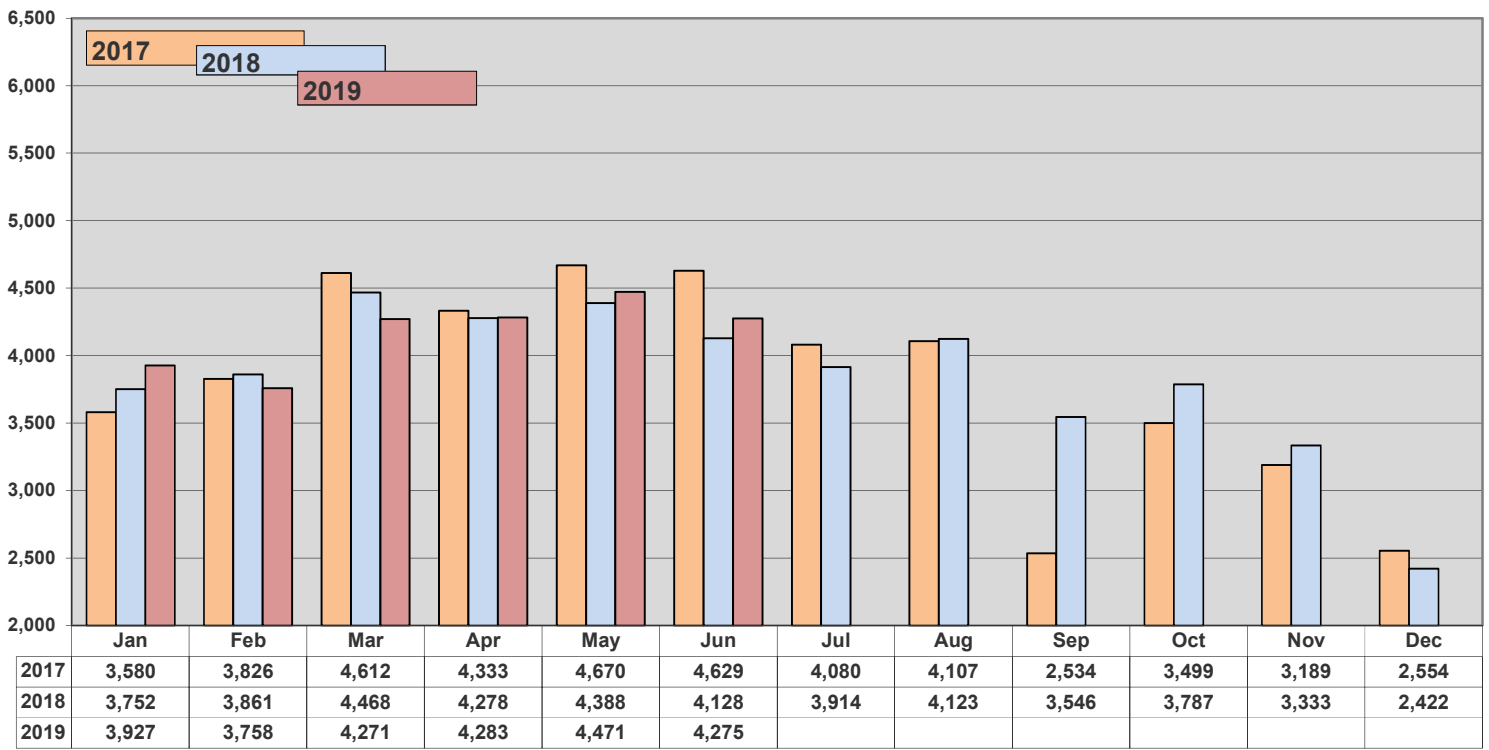


### Three-year History - Average Monthly Mortgage Rate

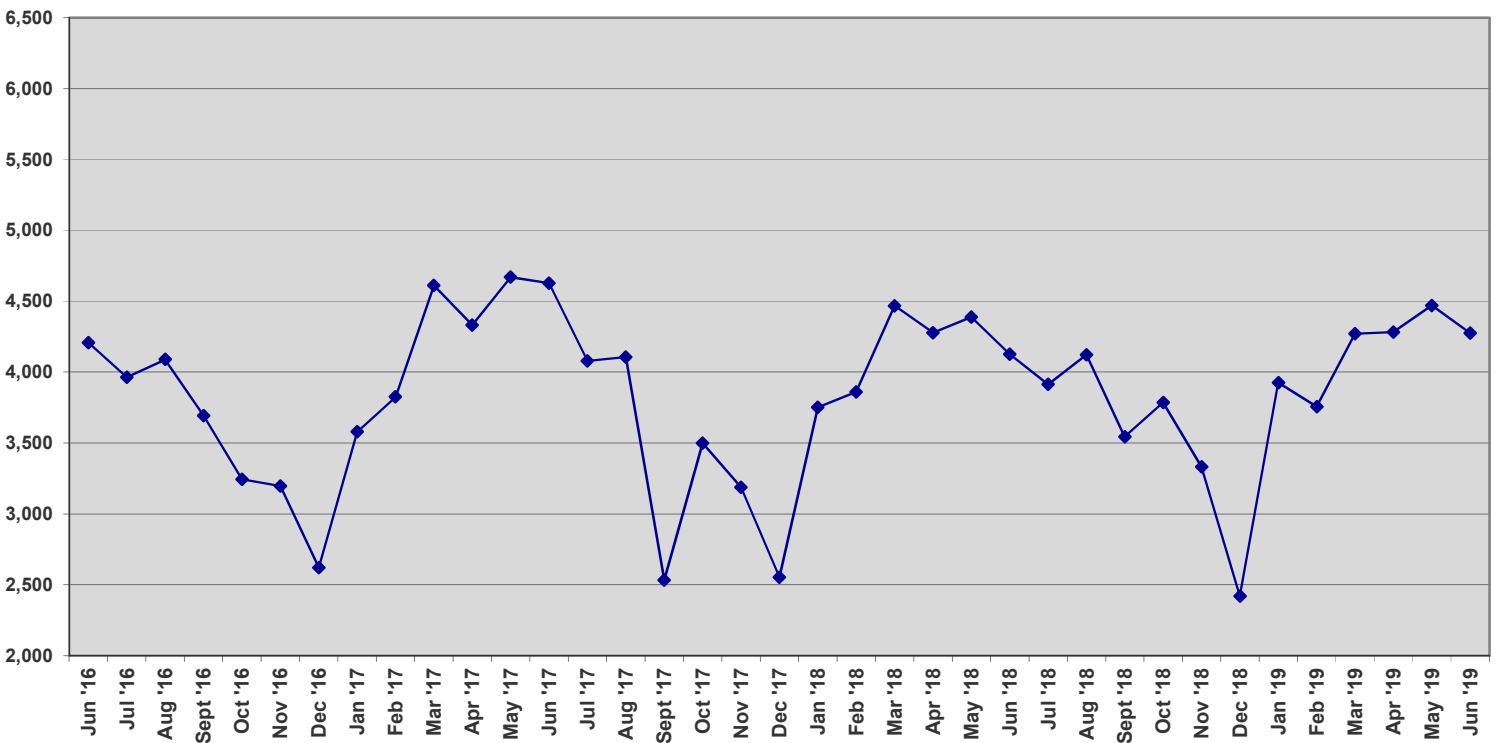




### New Listings

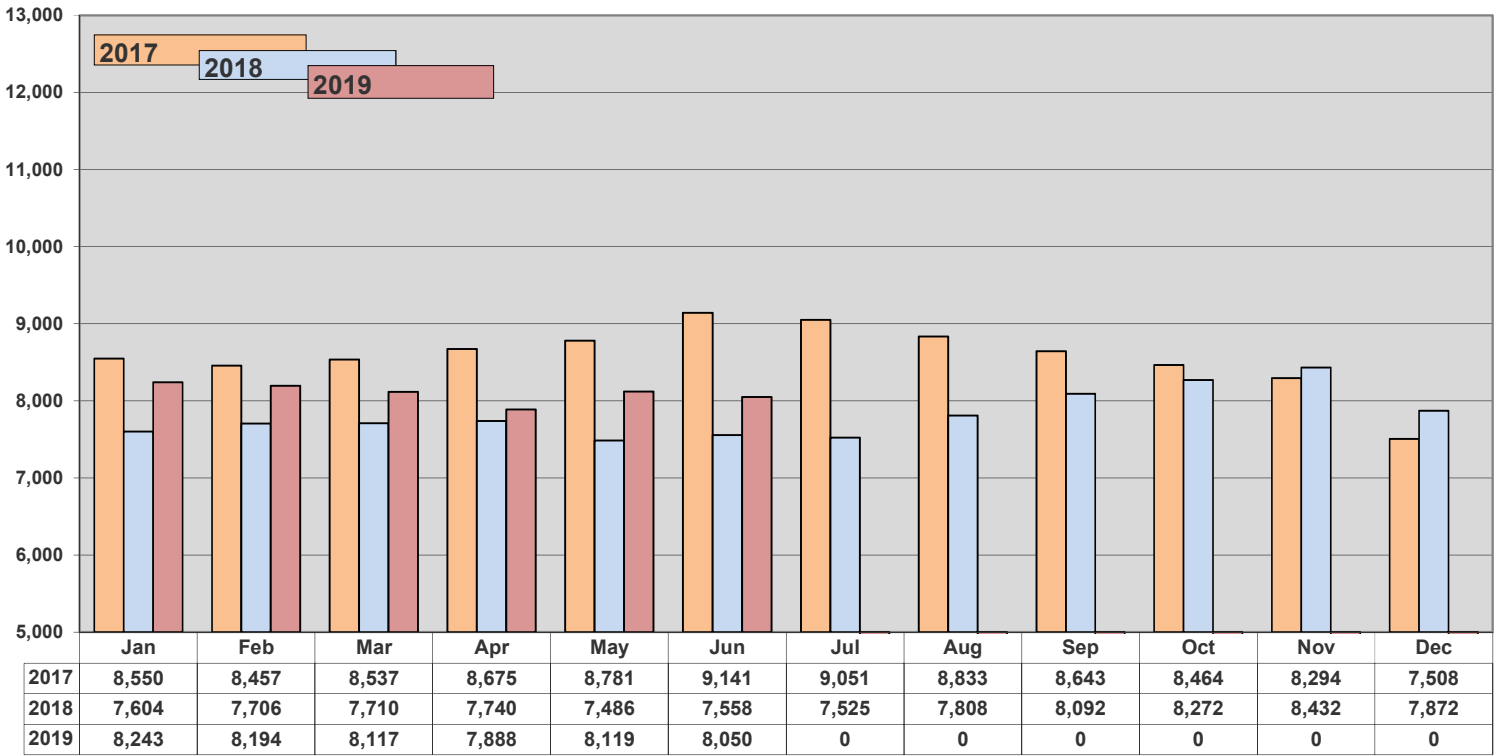


### Three-year History - New Listings

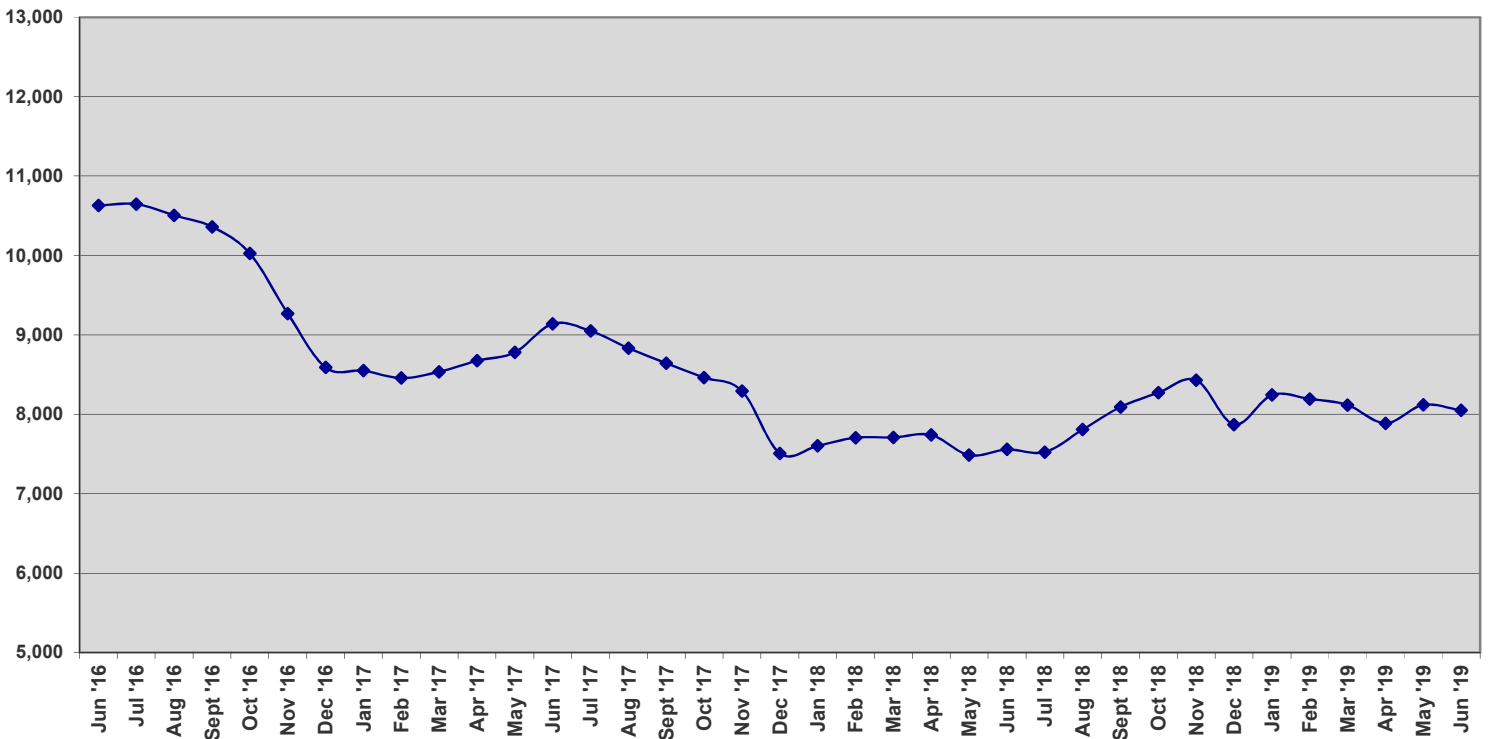




### Inventory

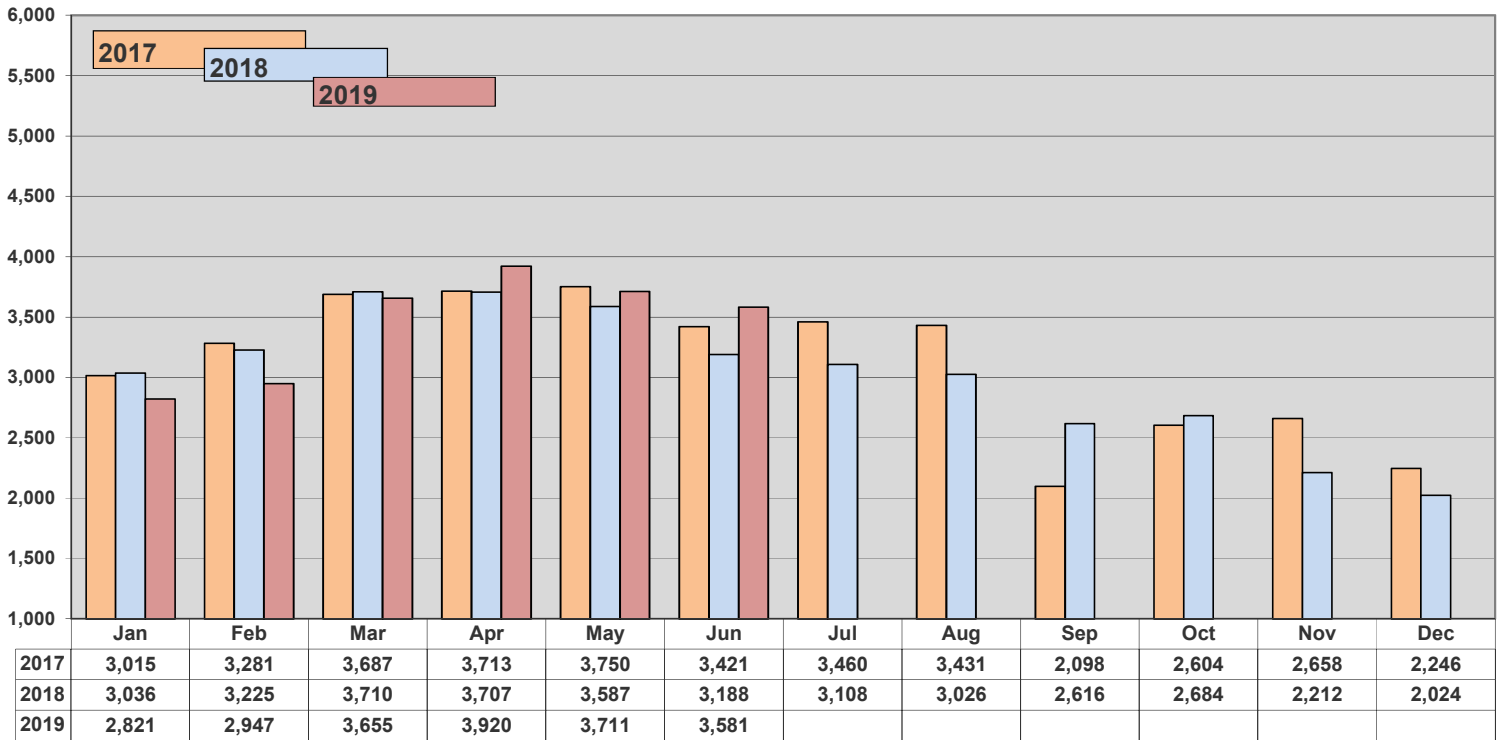


### Three-year History - Inventory

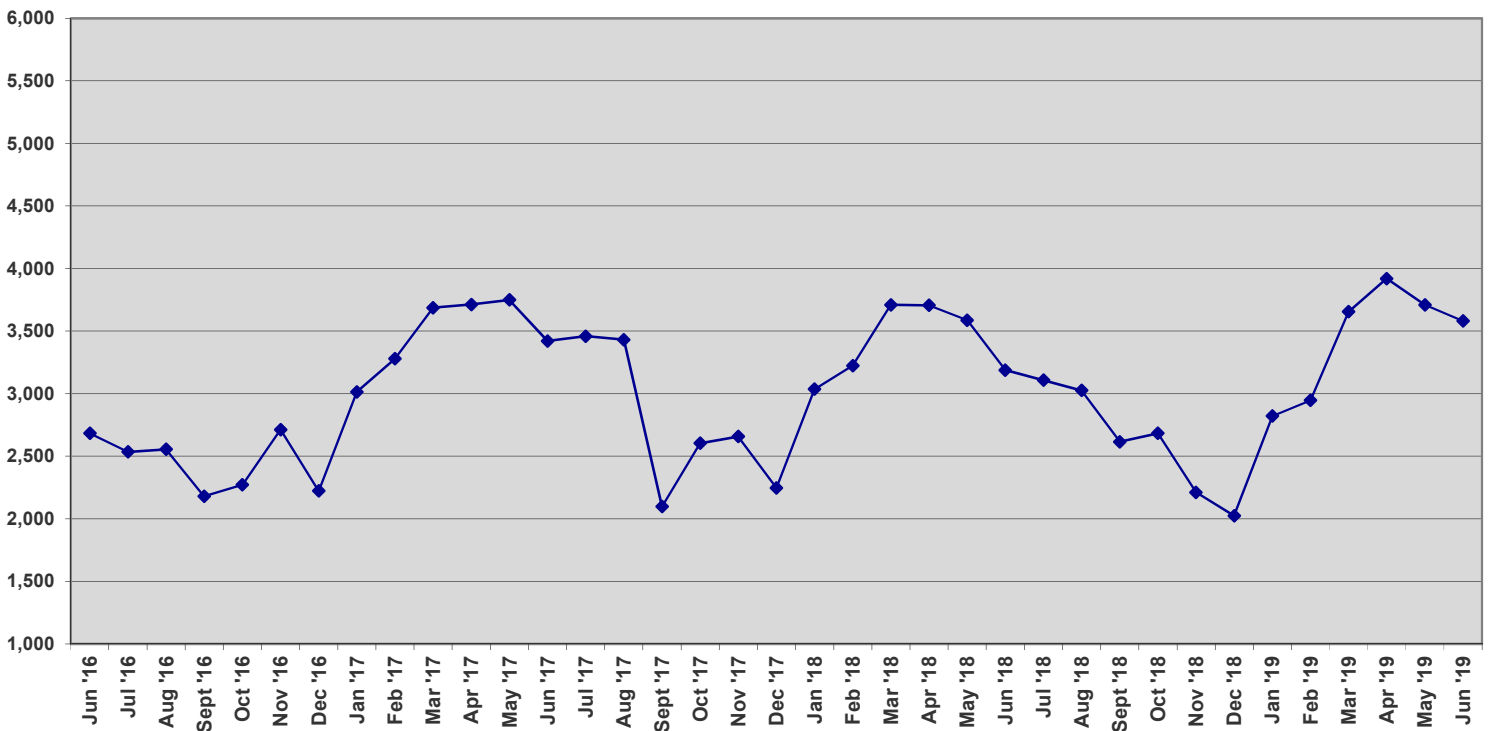




### New Contracts

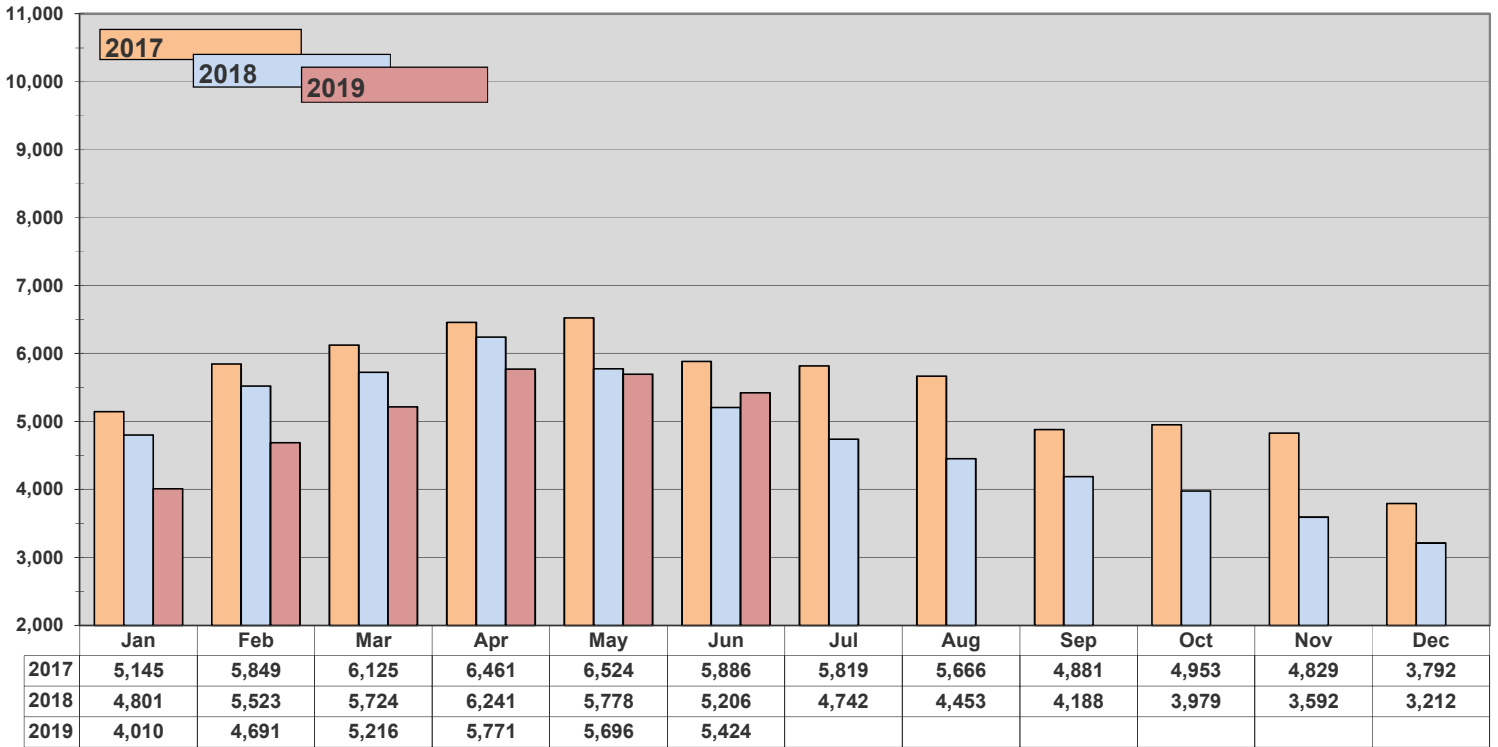


### Three-year History - New Contracts

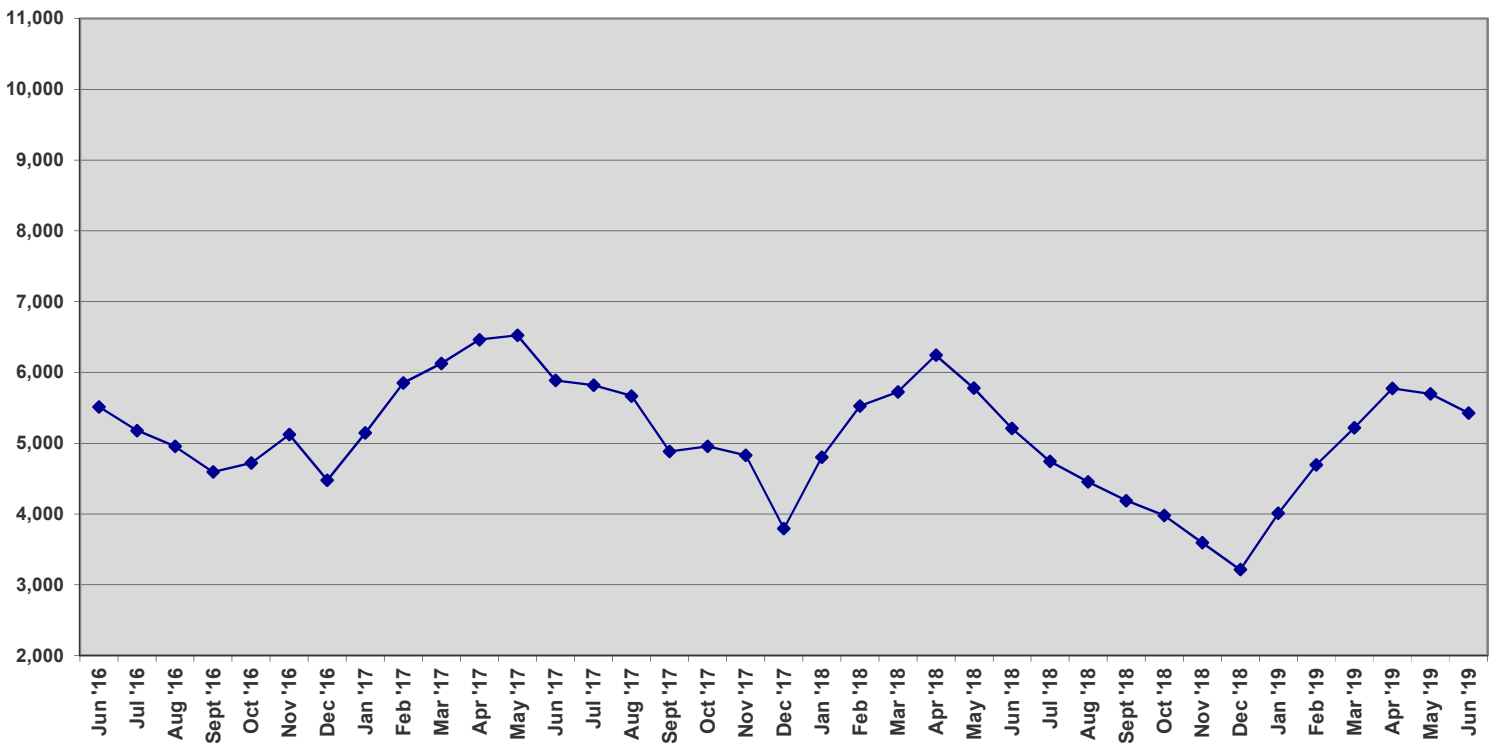




### Total Under Contract

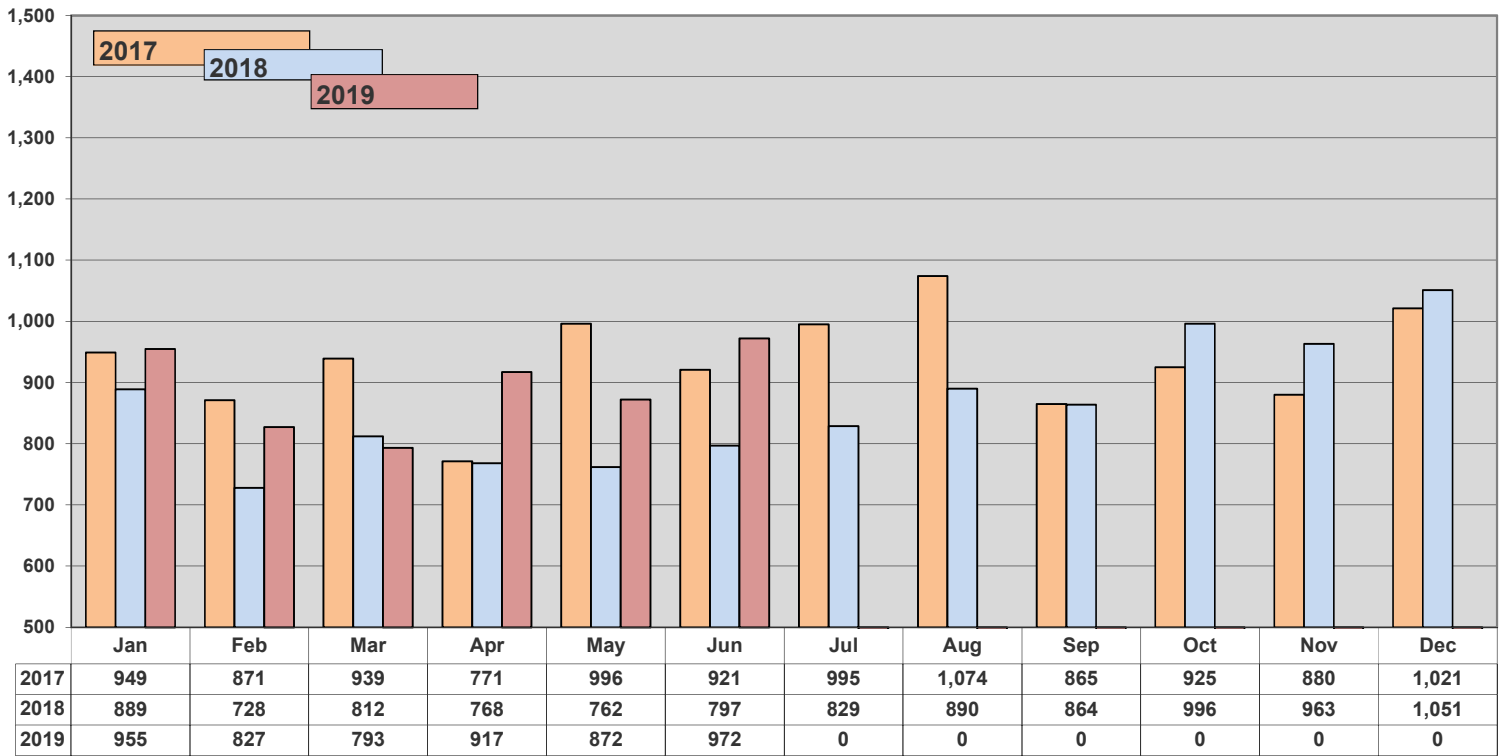


### Three-year History - Monthly Total Under Contract

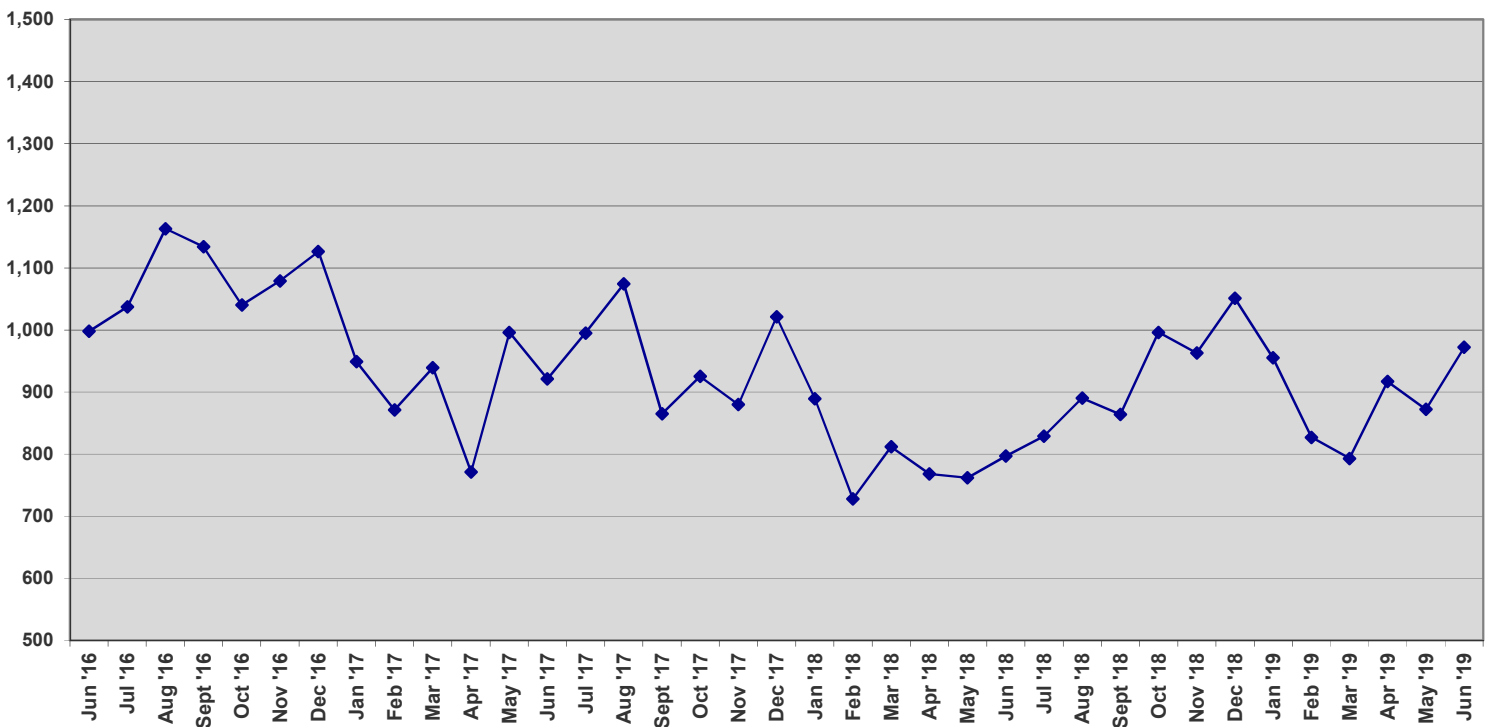




### Units off the Market - Withdrawn or Expired



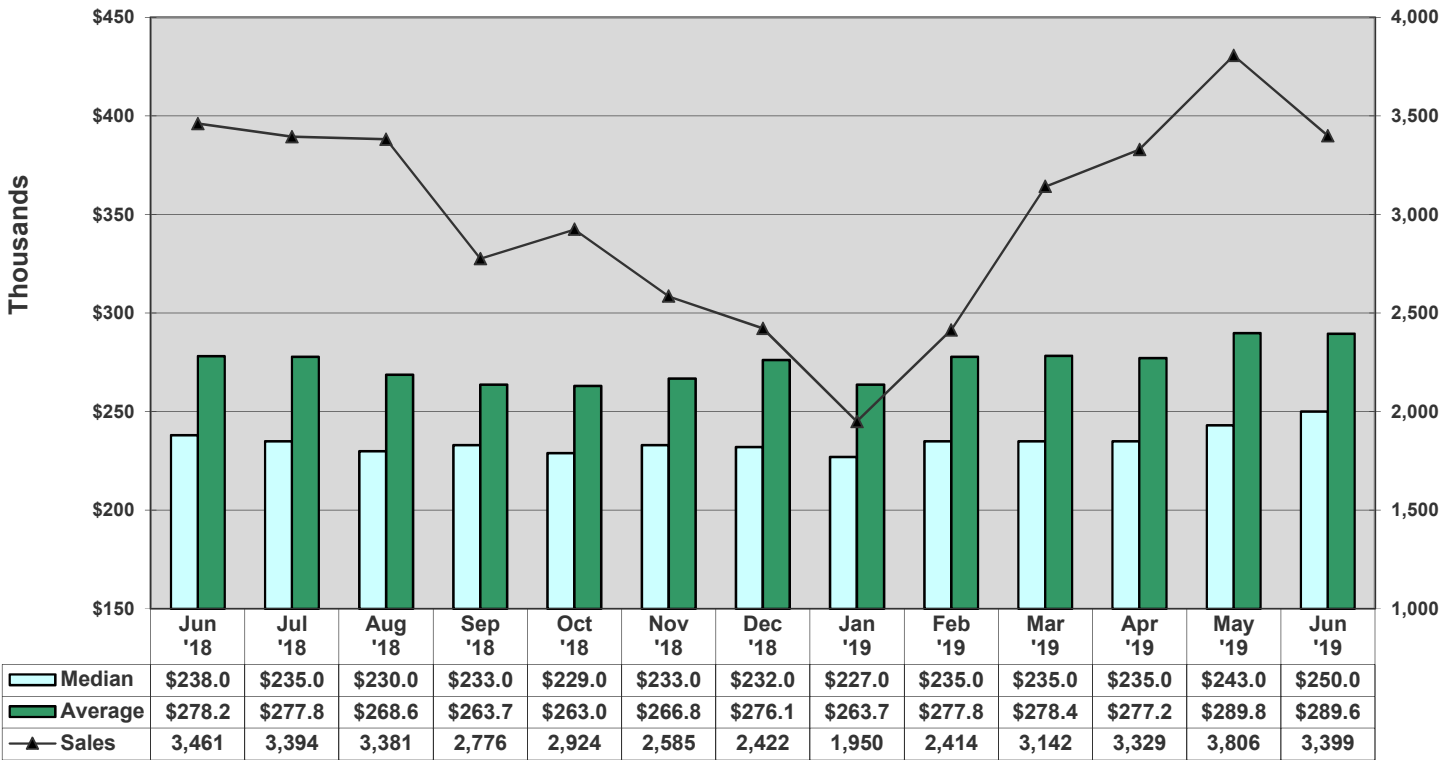
### Three-year History - Units off the Market - Withdrawn or Expired



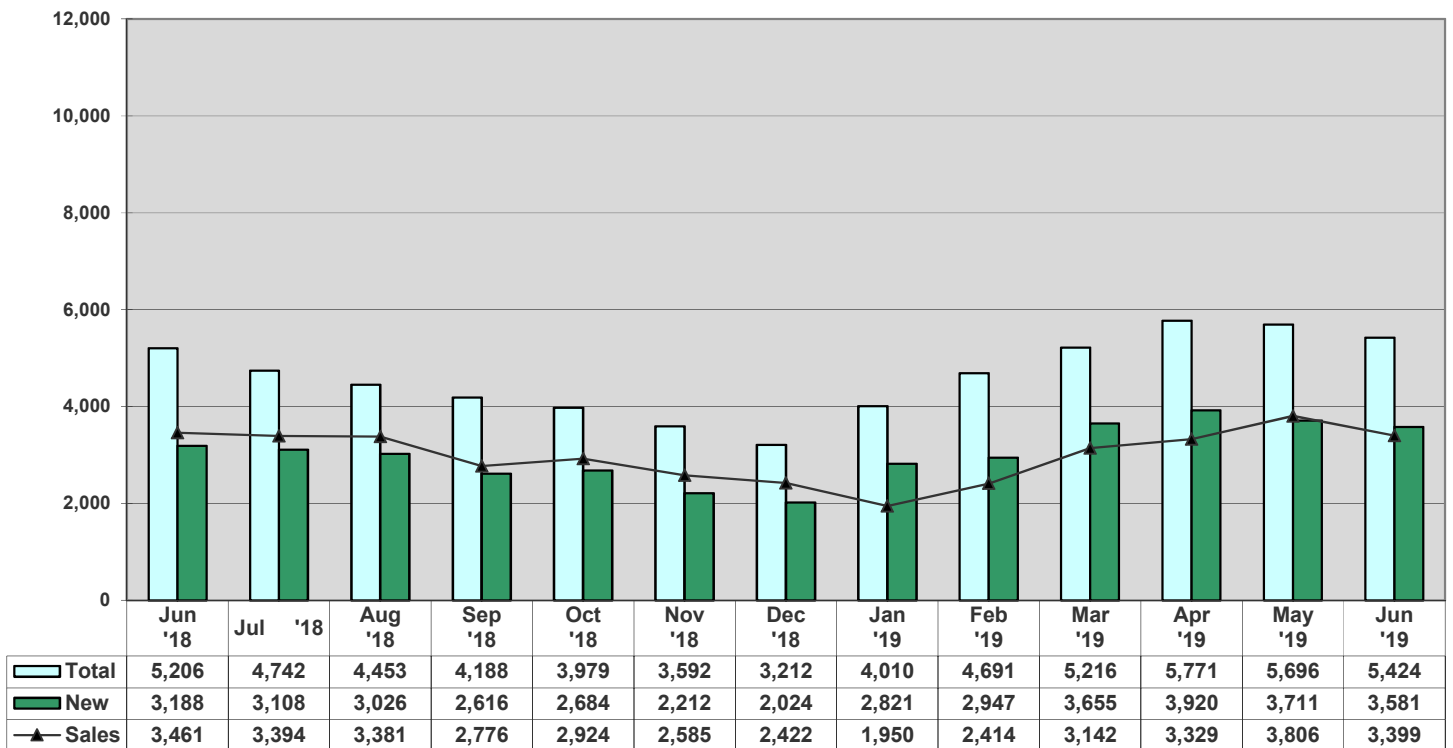




### Average vs Median Sales Price vs Sales

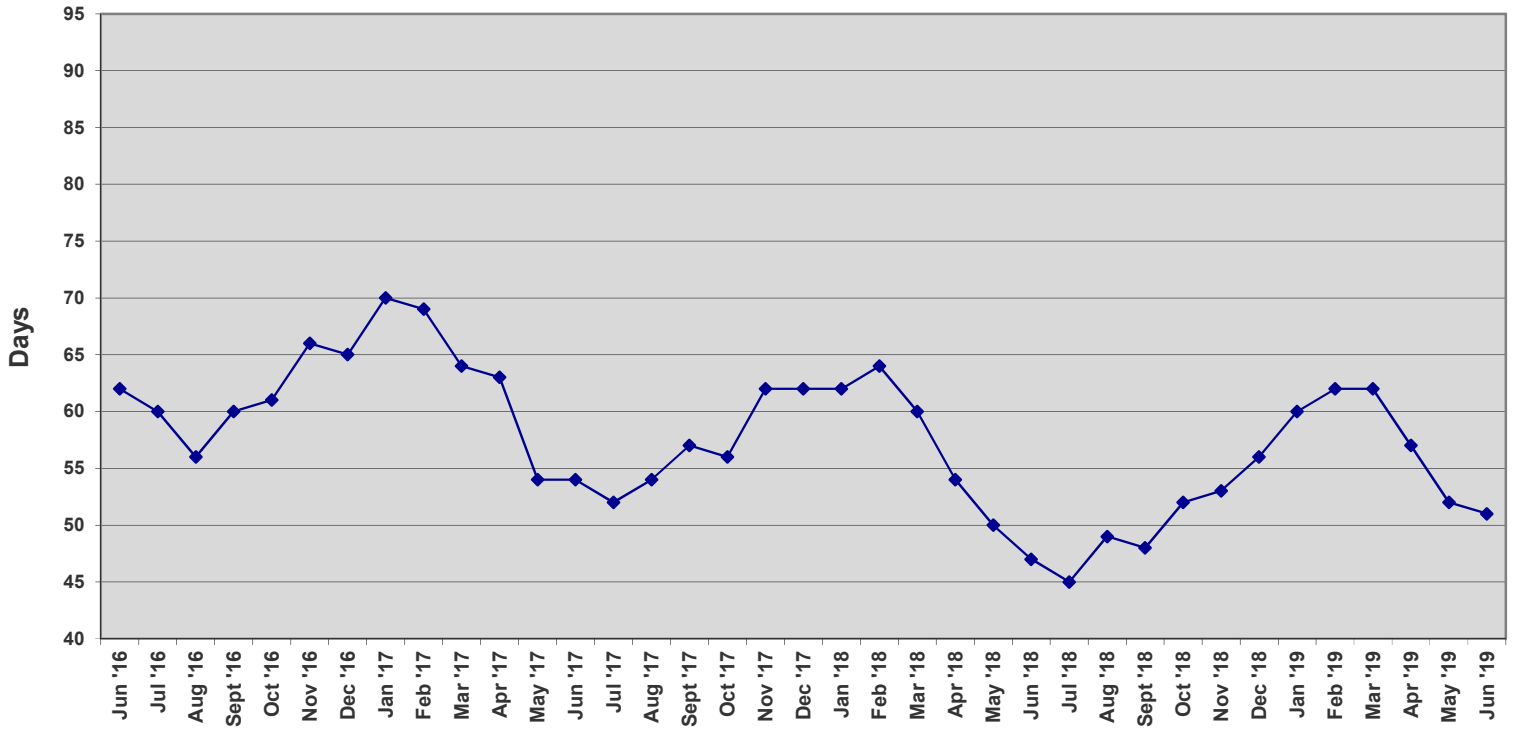


### Total Contracts vs New Contracts vs Sales





### Average Days on Market - Listing to Contract



### Average Days - Contract to Close

