



# MARKET PULSE

March 2019



ORLANDO REGIONAL  
**REALTOR**  
ASSOCIATION

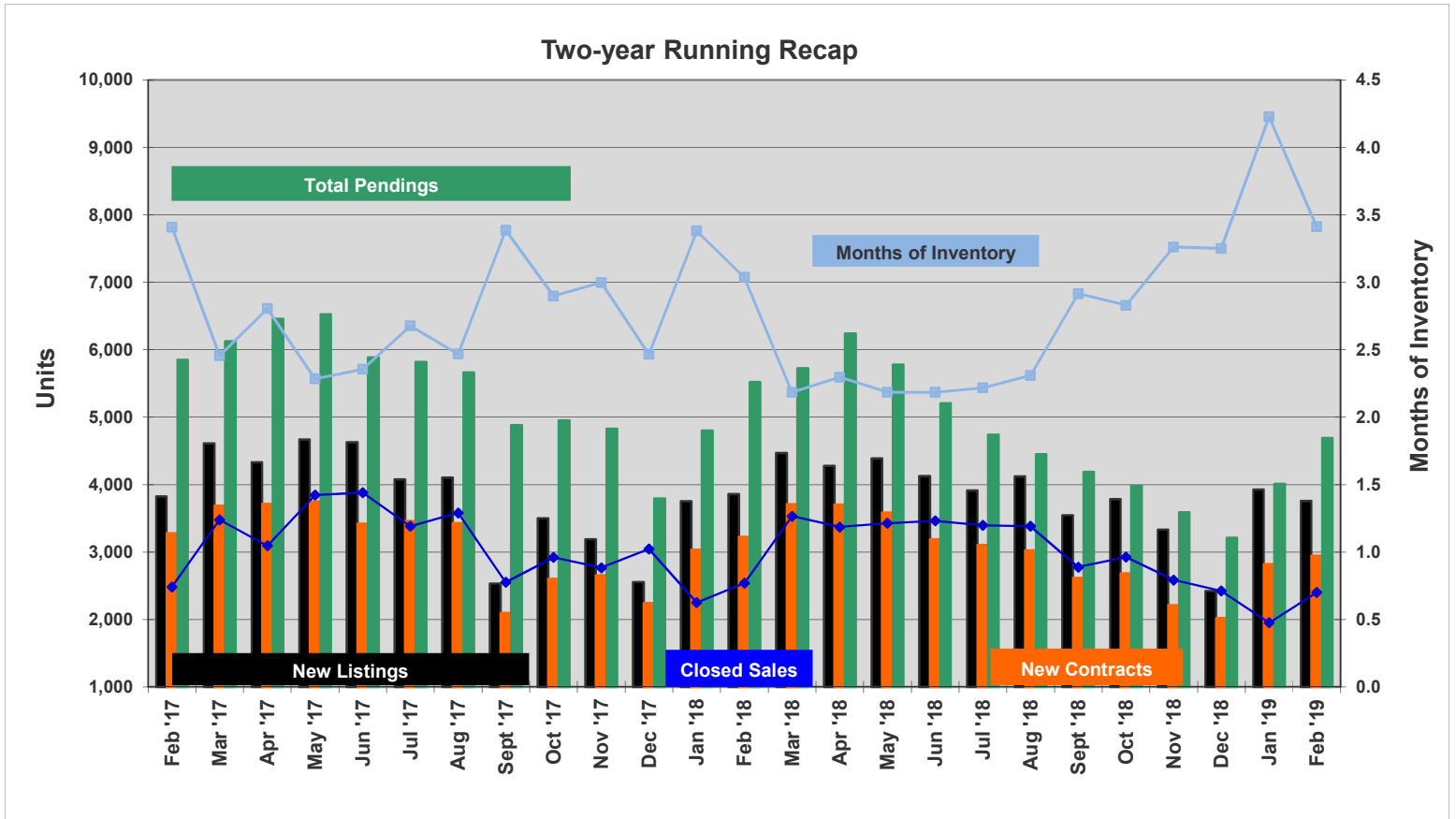


ORRA Originated Sales	Average Mtg Rate	Inventory				New Listings	New Contracts	Under Contract	Back on Market	Expired	Withdrawn	Sales Closed	Days on Market
		Total	Single Family Homes	Condos	Townhomes/Villas								
Jan '17	4.30%	8,550	6,437	1,331	782	3,580	3,015	5,145	372	240	709	2,213	70 *
Feb '17	<b>4.29%</b>	<b>8,457</b>	<b>6,404</b>	<b>1,264</b>	<b>789</b>	<b>3,826</b>	<b>3,281</b>	<b>5,849</b>	<b>380</b>	<b>232</b>	<b>639</b>	<b>2,482</b>	<b>69 *</b>
Mar '17	4.29%	8,537	6,531	1,266	740	4,612	3,687	6,125	421	181	758	3,477	64 *
Apr '17	4.11%	8,675	6,616	1,291	768	4,333	3,713	6,461	472	159	612	3,092	63 *
May '17	4.09%	8,781	6,755	1,227	799	4,670	3,750	6,524	475	190	806	3,845	54 *
Jun '17	3.98%	9,141	7,140	1,188	813	4,629	3,421	5,886	482	219	702	3,882	54 *
Jul '17	4.01%	9,051	7,130	1,126	795	4,080	3,460	5,819	521	221	774	3,381	52 *
Aug '17	3.92%	8,833	6,993	1,081	759	4,107	3,431	5,666	492	248	826	3,580	54 *
Sept '17	3.84%	8,643	6,857	1,044	742	2,534	2,098	4,881	409	268	597	2,552	57 *
Oct '17	4.03%	8,464	6,709	1,049	706	3,499	2,604	4,953	394	175	750	2,921	56 *
Nov '17	3.96%	8,294	6,540	1,043	711	3,189	2,658	4,829	365	166	714	2,767	62 *
Dec '17	3.97%	7,508	5,915	950	643	2,554	2,246	3,792	365	395	626	3,045	62 *
Jan '18	4.07%	7,604	6,010	936	658	3,752	3,036	4,801	381	256	633	2,249	62 *
Feb '18	<b>4.39%</b>	<b>7,706</b>	<b>6,130</b>	<b>947</b>	<b>629</b>	<b>3,861</b>	<b>3,225</b>	<b>5,523</b>	<b>429</b>	<b>183</b>	<b>545</b>	<b>2,538</b>	<b>64 *</b>
Mar '18	4.29%	7,710	6,136	959	615	4,468	3,710	5,724	427	210	602	3,530	60 *
Apr '18	4.51%	7,740	6,177	966	597	4,278	3,707	6,241	430	223	545	3,371	54 *
May '18	4.64%	7,486	6,043	915	528	4,388	3,587	5,778	481	159	603	3,426	50 *
Jun '18	4.61%	7,558	5,990	919	649	4,128	3,188	5,206	655	186	611	3,461	47 *
Jul '18	4.59%	7,525	6,038	959	528	3,914	3,108	4,742	681	186	643	3,394	45 *
Aug '18	4.57%	7,808	6,277	989	542	4,123	3,026	4,453	642	198	692	3,381	49 *
Sept '18	4.66%	8,092	6,471	1,071	550	3,546	2,616	4,188	655	217	647	2,776	48 *
Oct '18	4.85%	8,272	6,556	1,121	595	3,787	2,684	3,979	632	241	755	2,924	52 *
Nov '18	4.97%	8,432	6,669	1,163	600	3,333	2,212	3,592	580	221	742	2,585	53 *
Dec '18	4.38%	7,872	6,183	1,112	577	2,422	2,024	3,212	528	397	654	2,422	56 *
Jan '19	4.32%	8,243	6,421	1,181	641	3,927	2,821	4,010	596	240	715	1,950	60 *
Feb '19	<b>4.34%</b>	<b>8,194</b>	<b>6,412</b>	<b>1,222</b>	<b>560</b>	<b>3,758</b>	<b>2,947</b>	<b>4,691</b>	<b>523</b>	<b>195</b>	<b>632</b>	<b>2,402</b>	<b>62 *</b>
ORRA Originated Sales	Average Mtg Rate	Total Inventory	Single Family Homes	Condos	Townhomes/Villas	New Listings	New Contracts	Under Contract	Back on Market	Expired	Withdrawn	Sales Closed	Days on Market
		Inventory											

\* Corrected monthly sales.

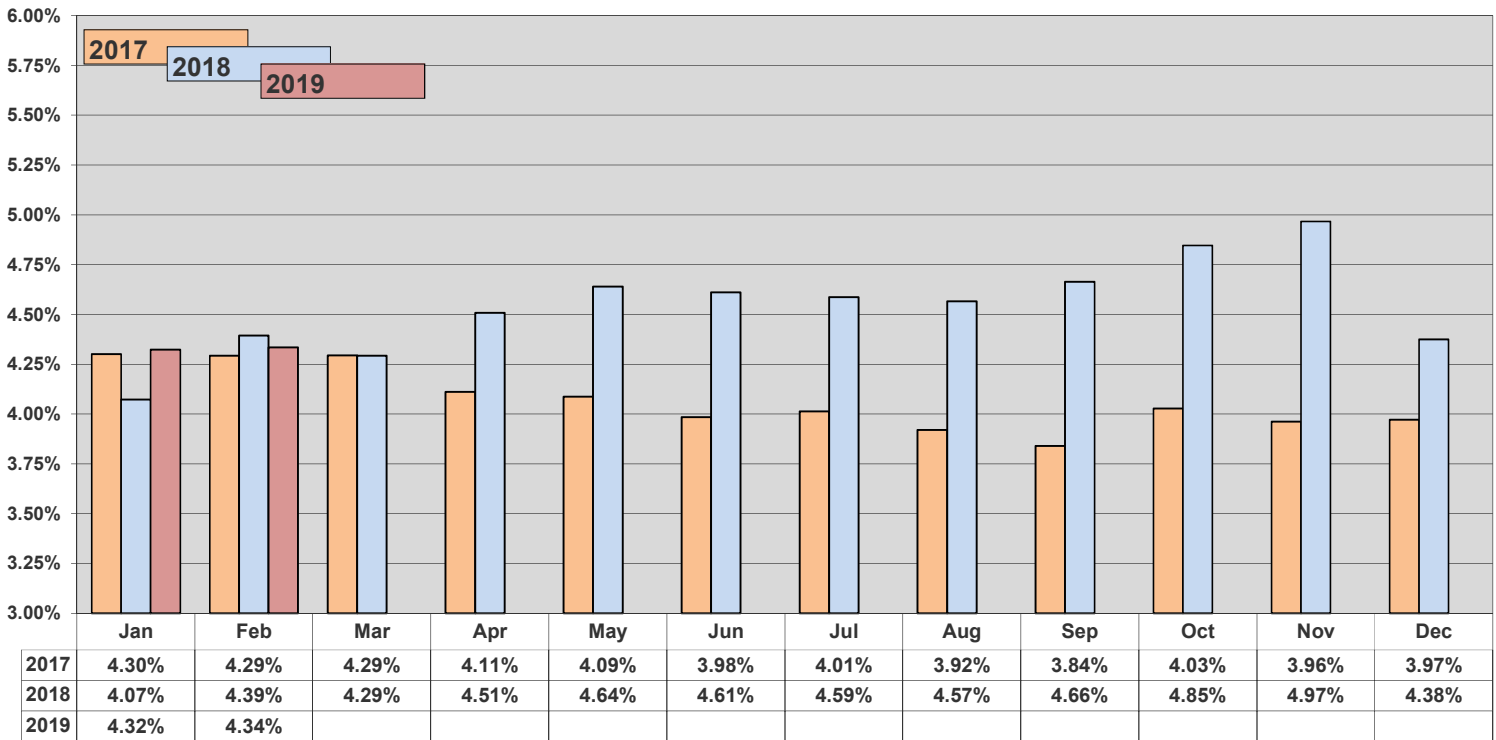
Complete stats and data may be found under Market Info at [www.orlandorealtors.org](http://www.orlandorealtors.org). Comments or suggestions? Contact Mike Blinn, Statistician.

Market Pulse™ data represents all listings taken or sold by ORRA brokers, regardless of location and is exclusive to residential property, which includes townhomes, duplexes, single-family homes, and condos. It does not include vacant land or commercial transactions.

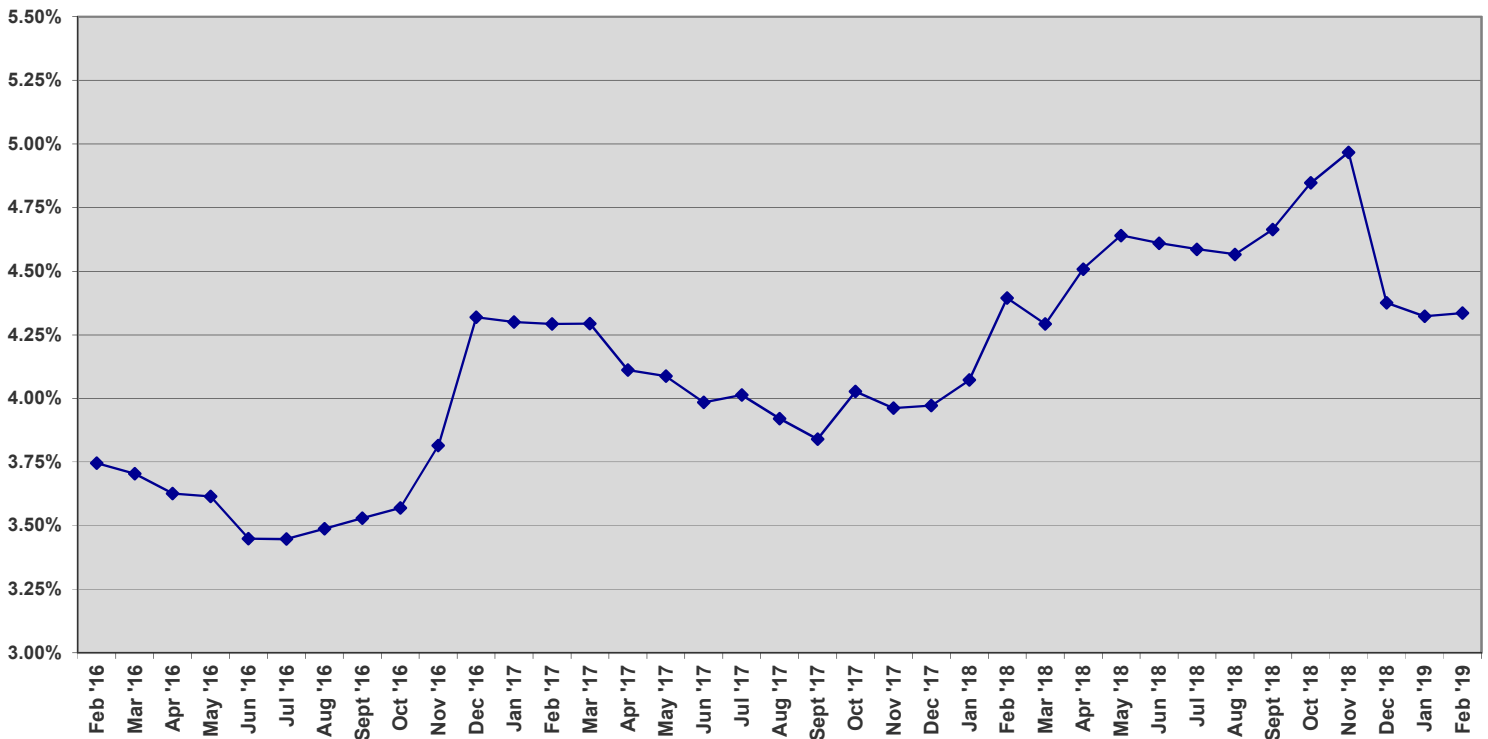




### Average Monthly Mortgage Rate

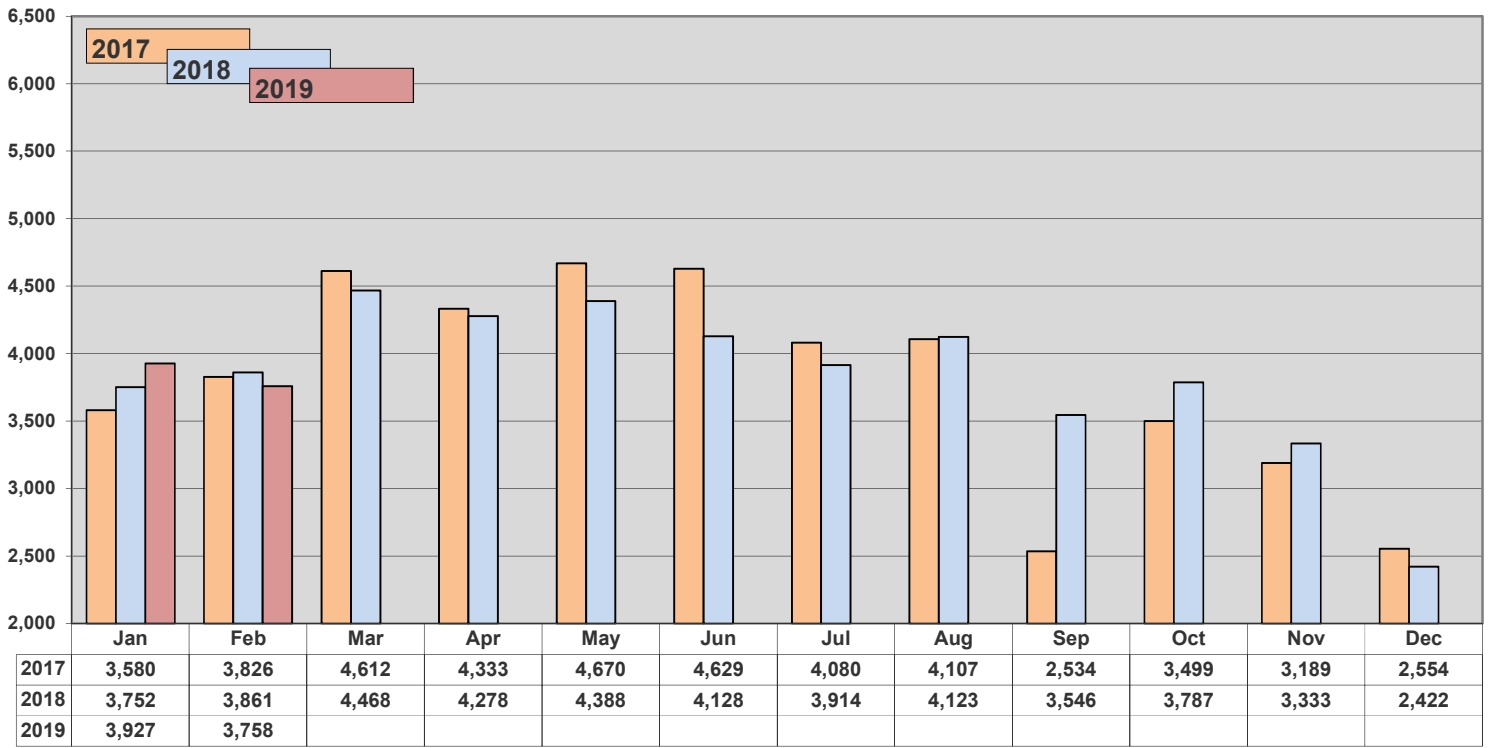


### Three-year History - Average Monthly Mortgage Rate

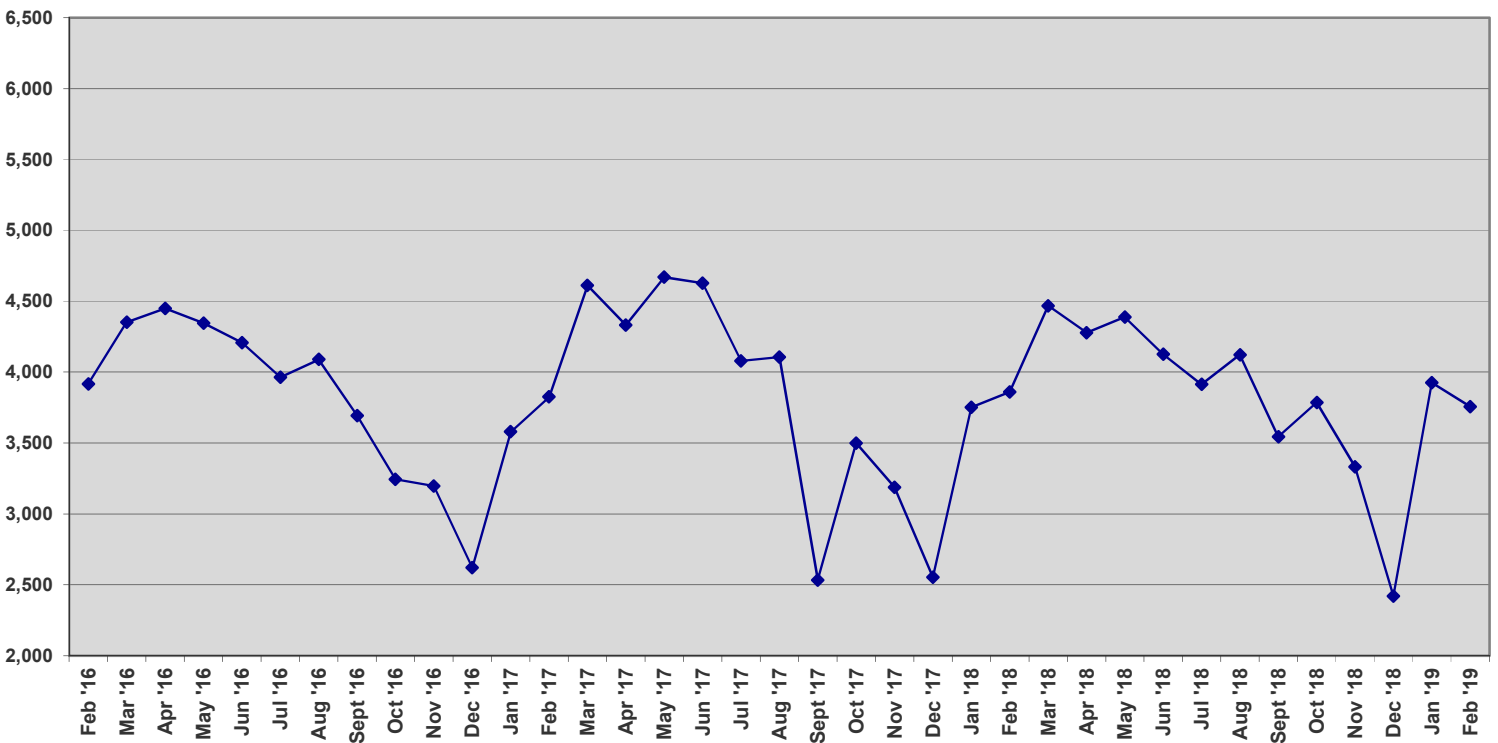




### New Listings

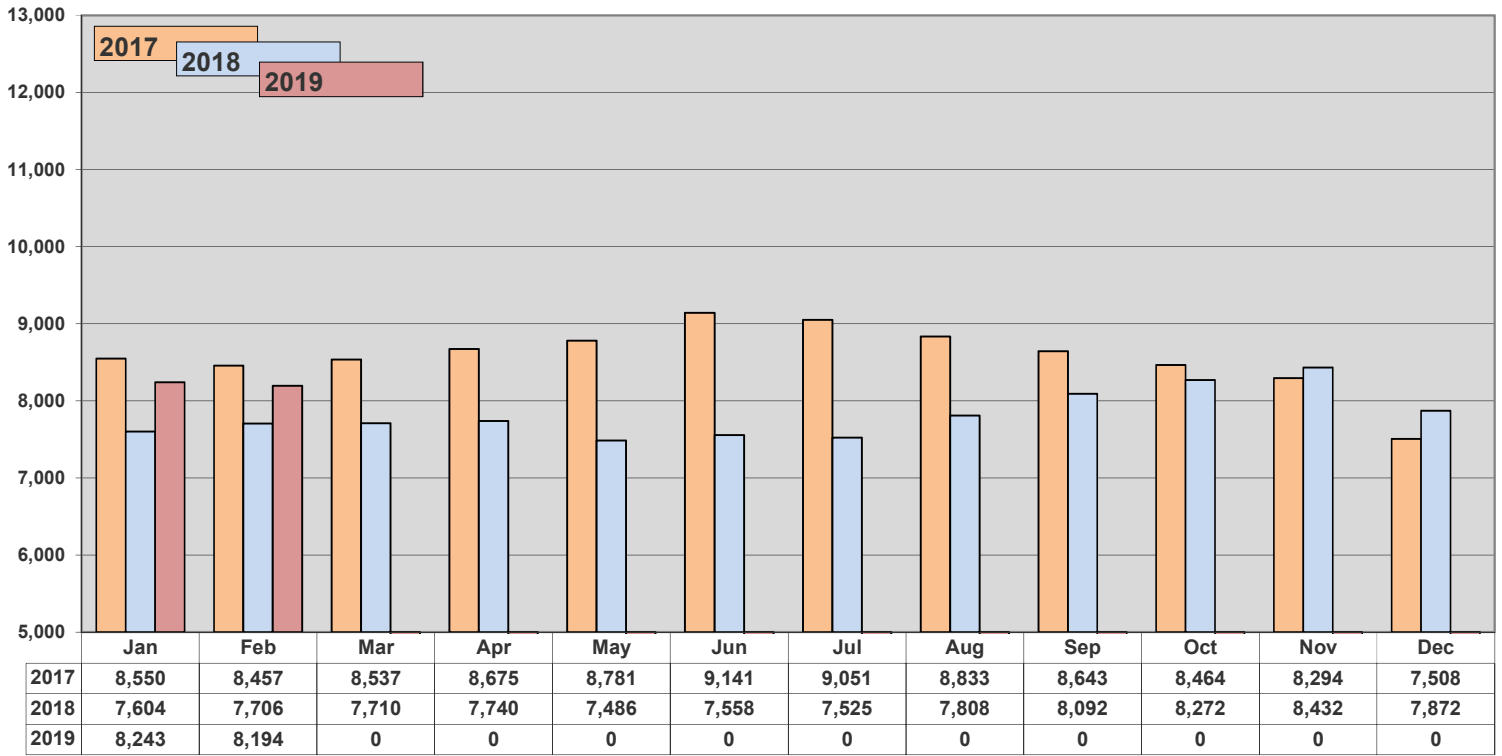


### Three-year History - New Listings

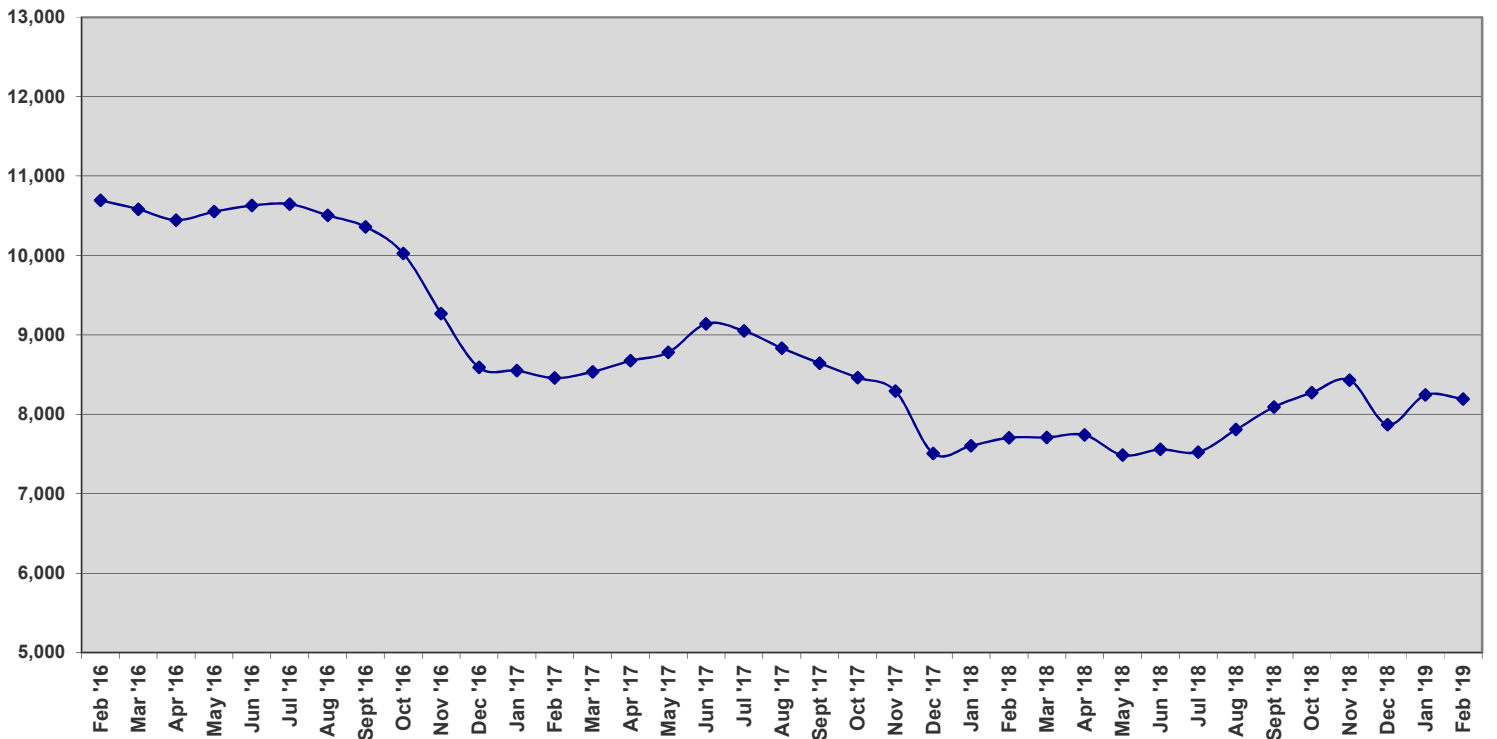




### Inventory

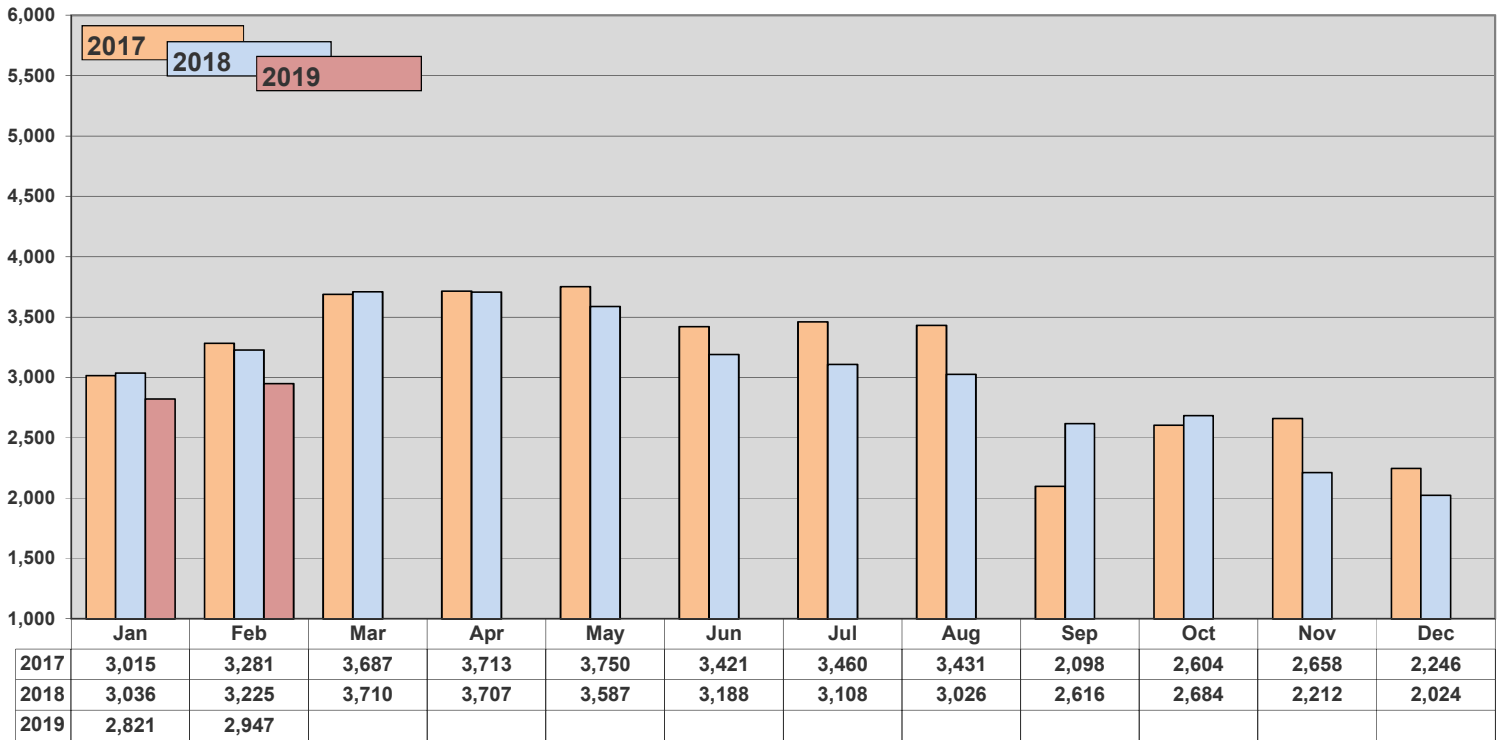


### Three-year History - Inventory

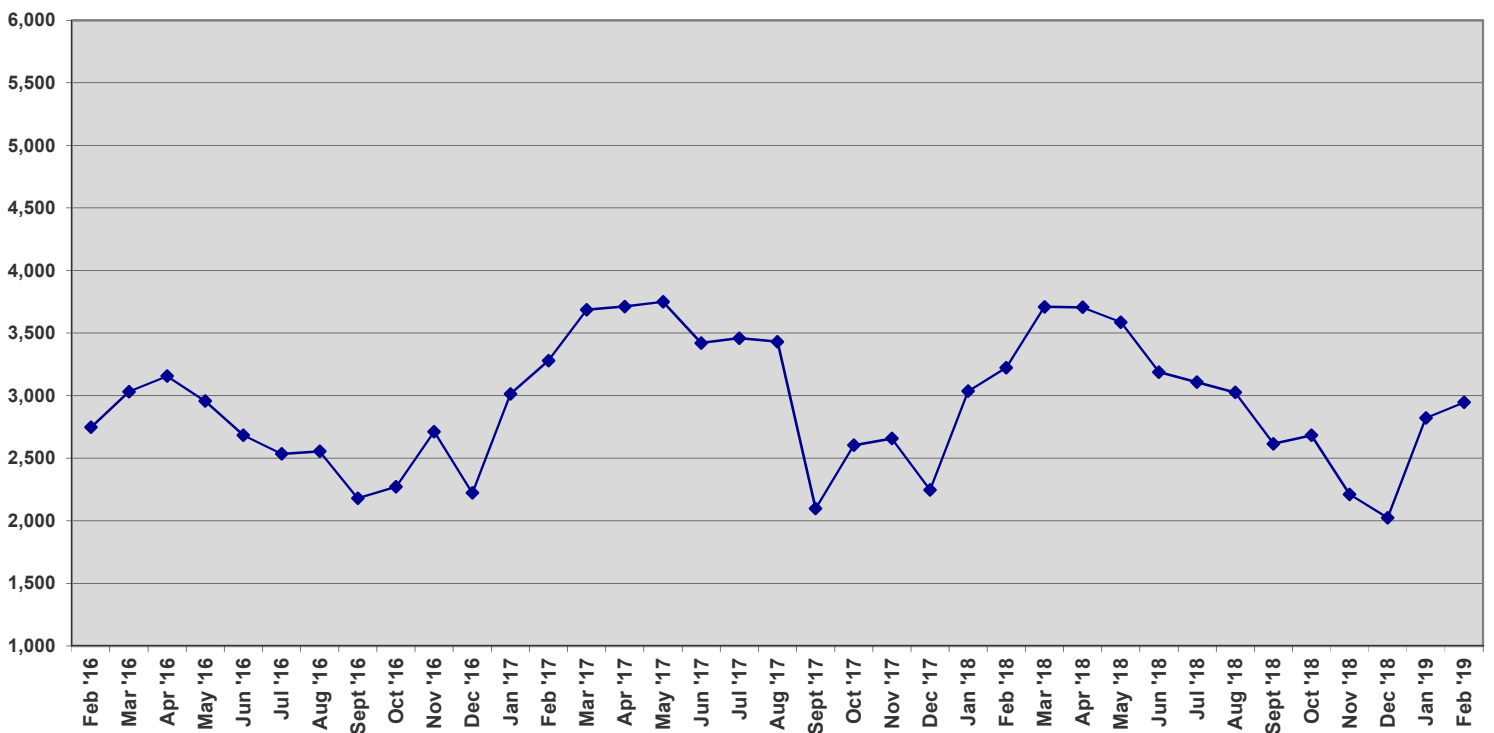




### New Contracts

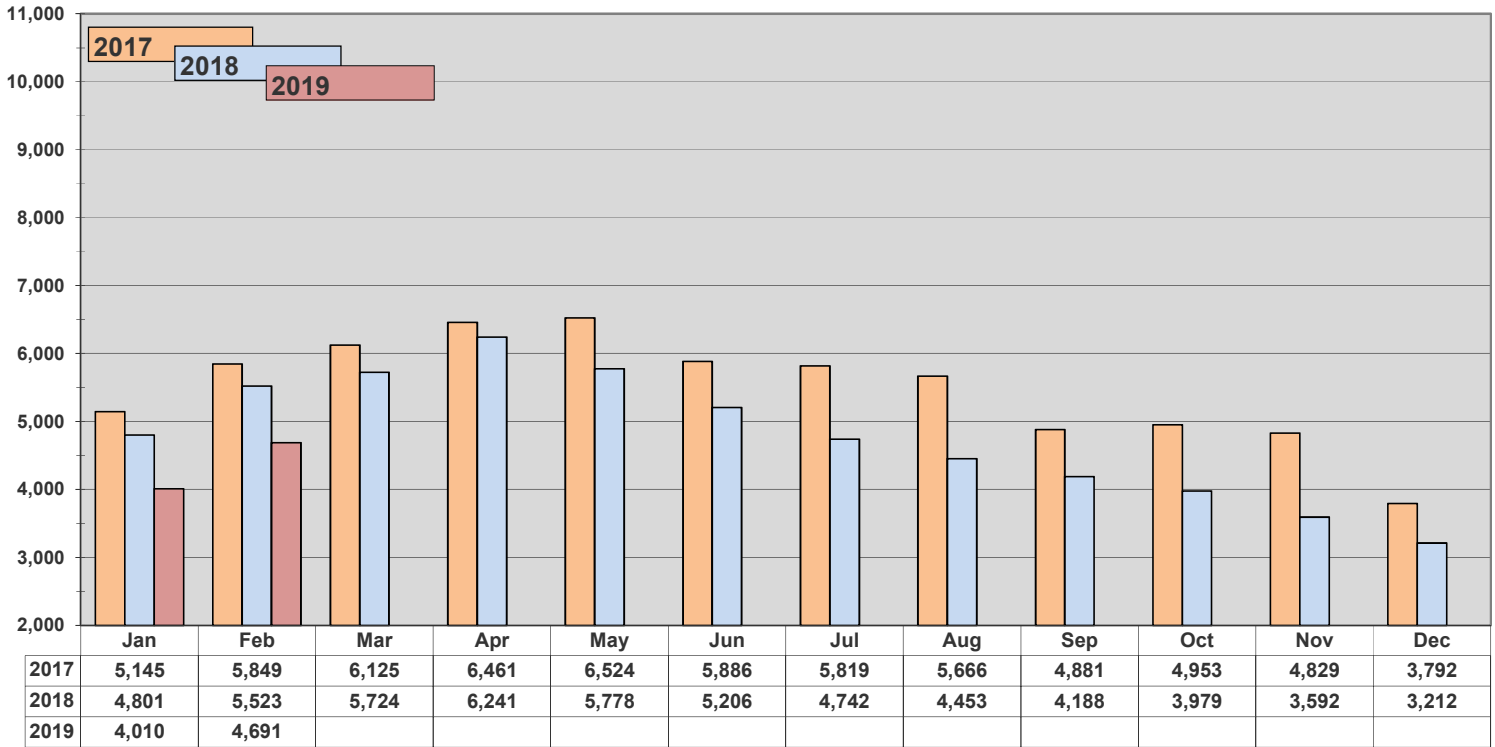


### Three-year History - New Contracts

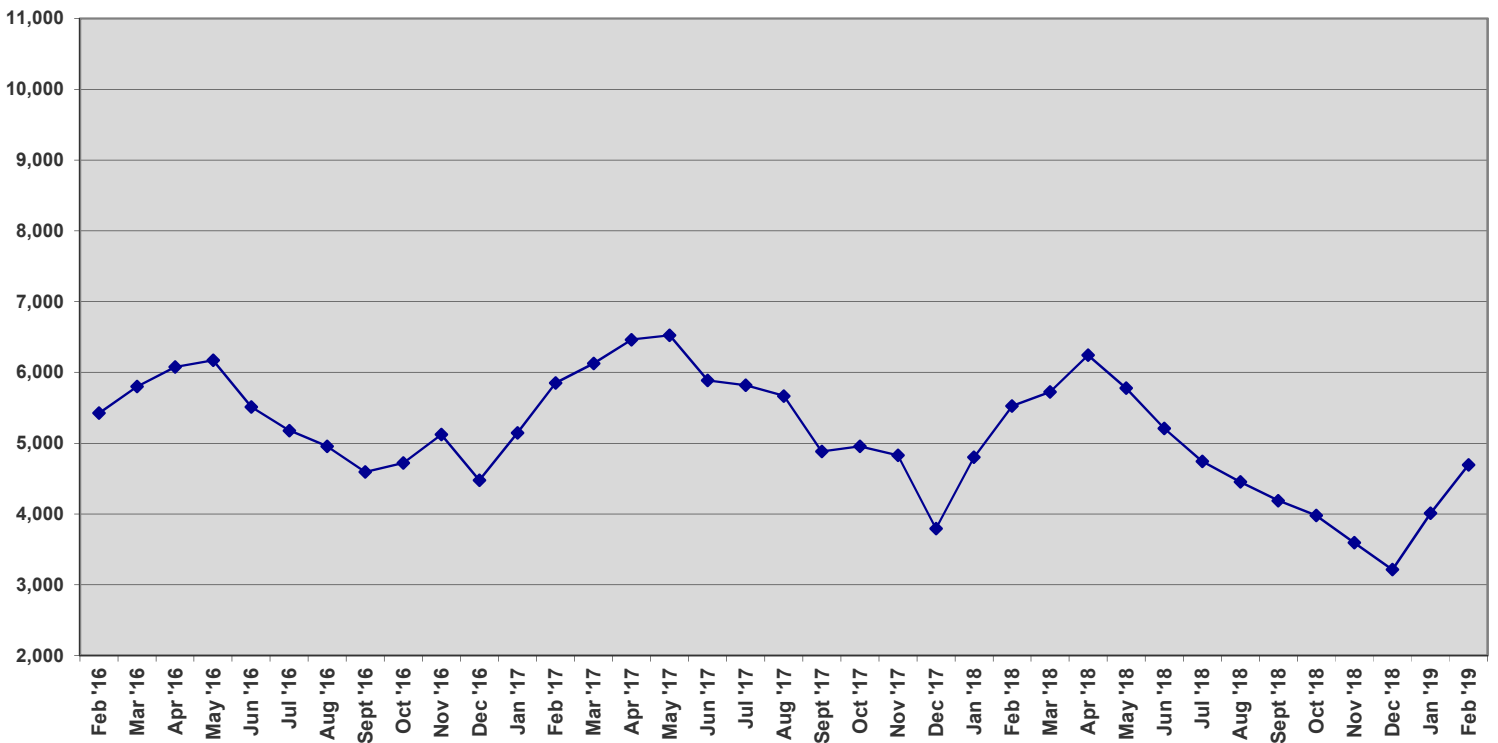




### Total Under Contract

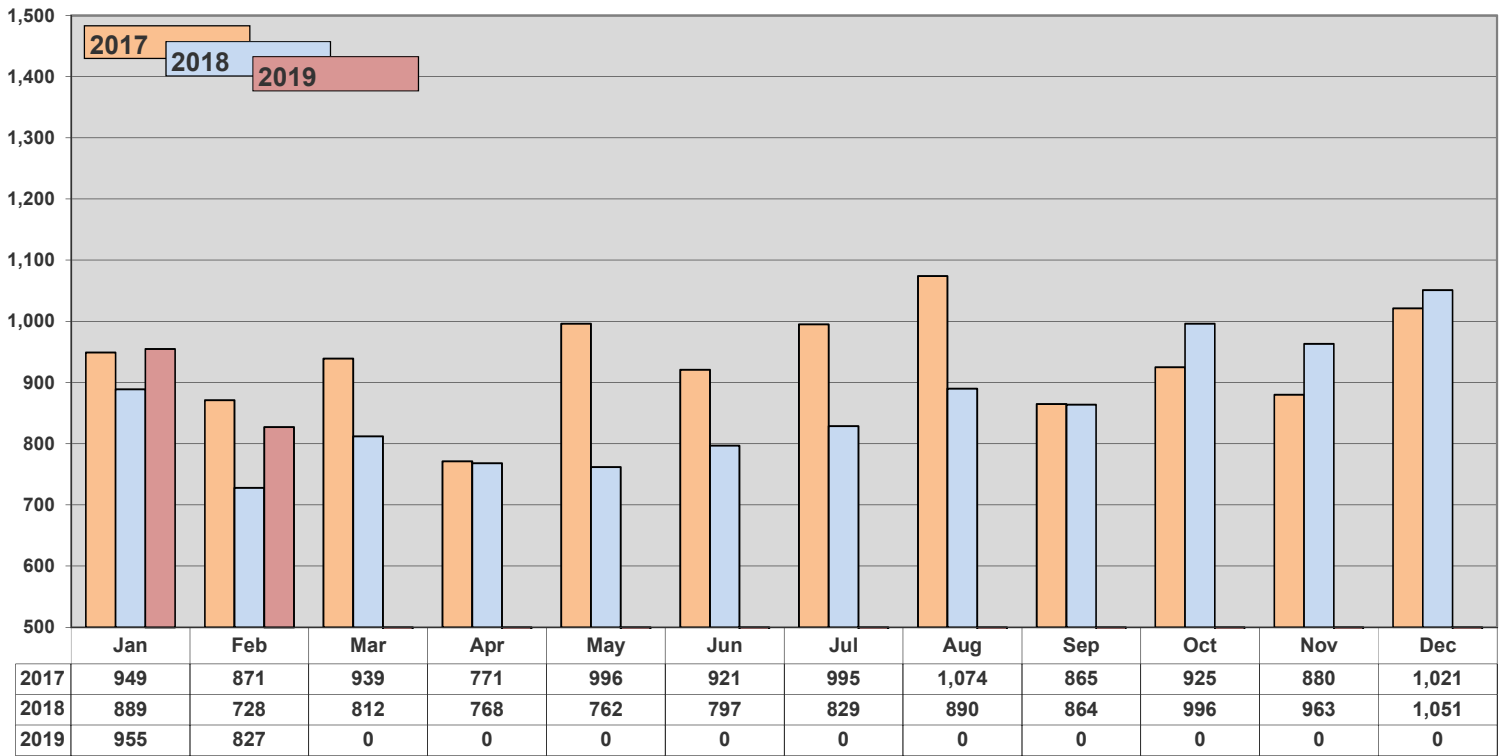


### Three-year History - Monthly Total Under Contract

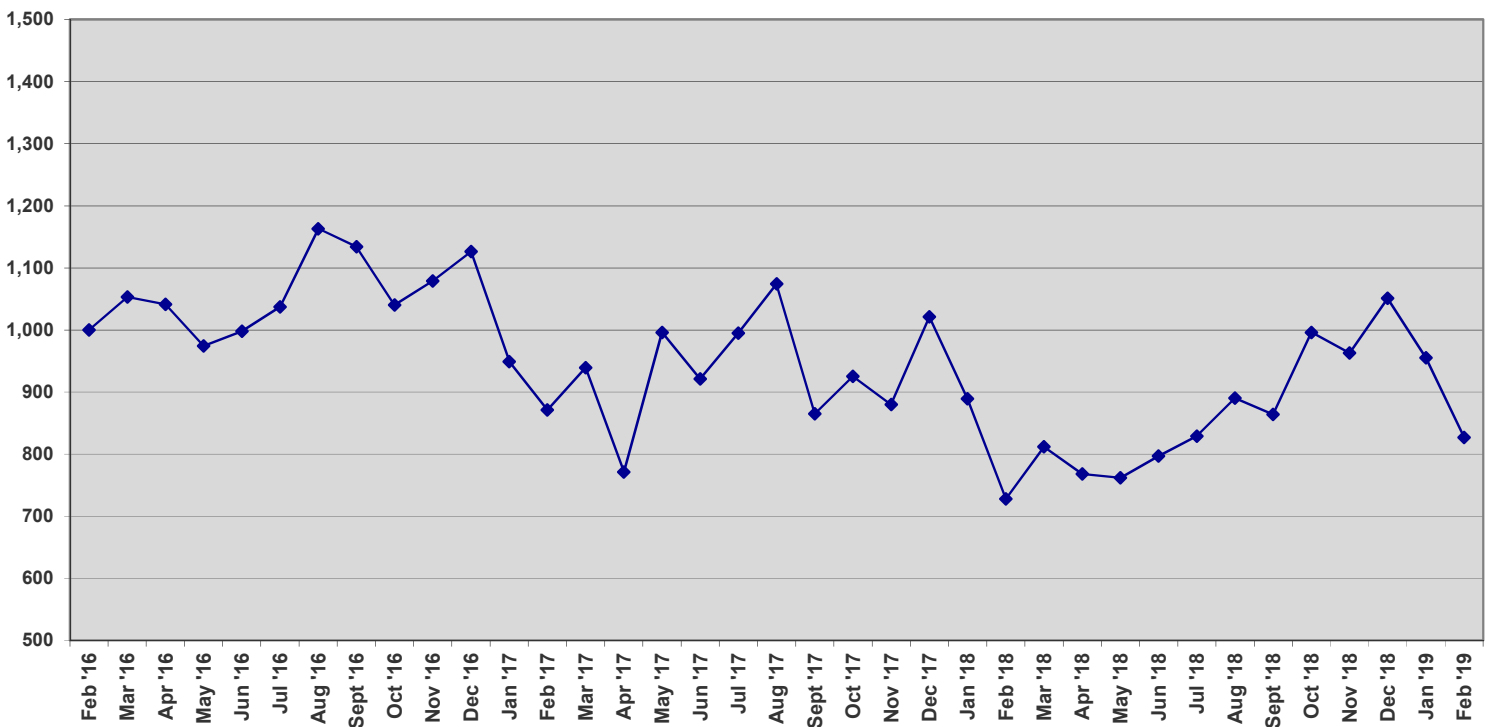




### Units off the Market - Withdrawn or Expired



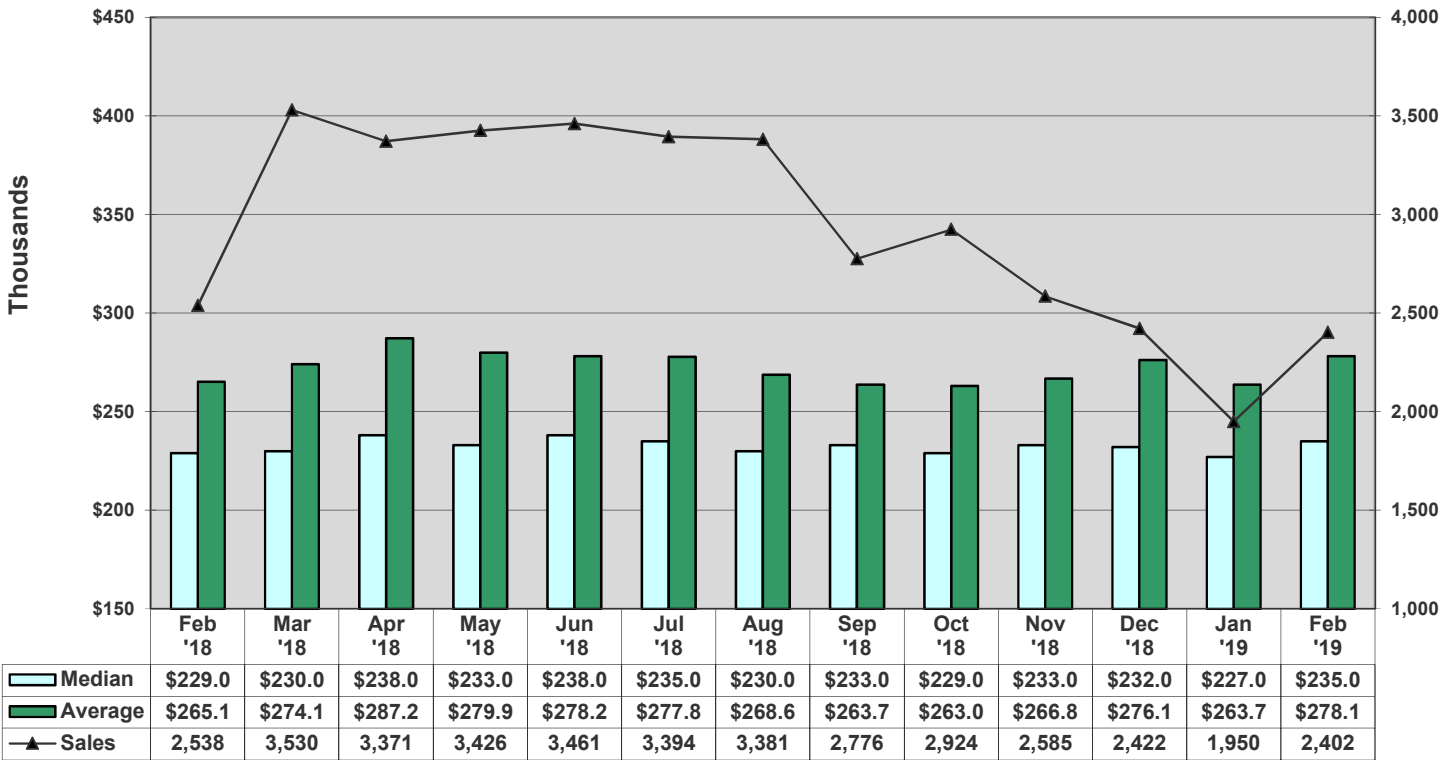
### Three-year History - Units off the Market - Withdrawn or Expired



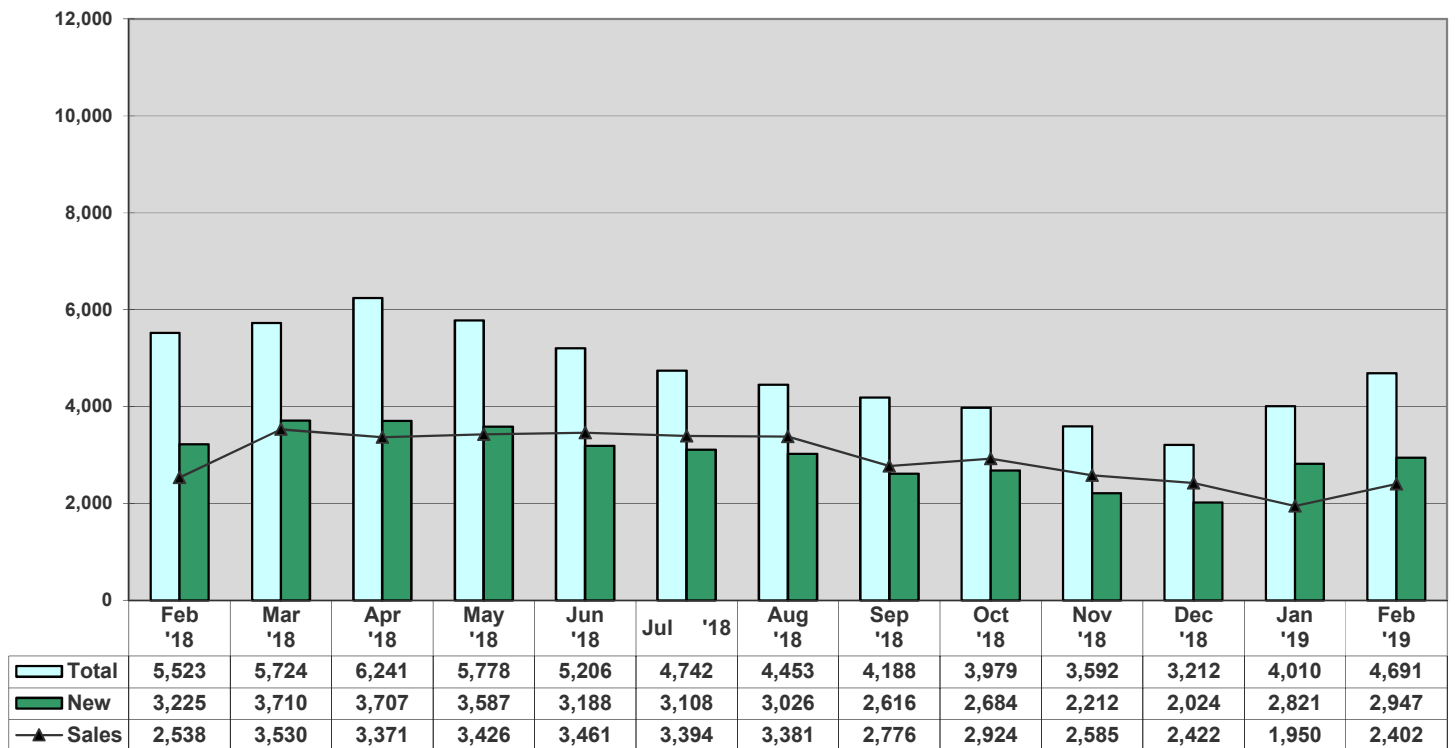




### Average vs Median Sales Price vs Sales

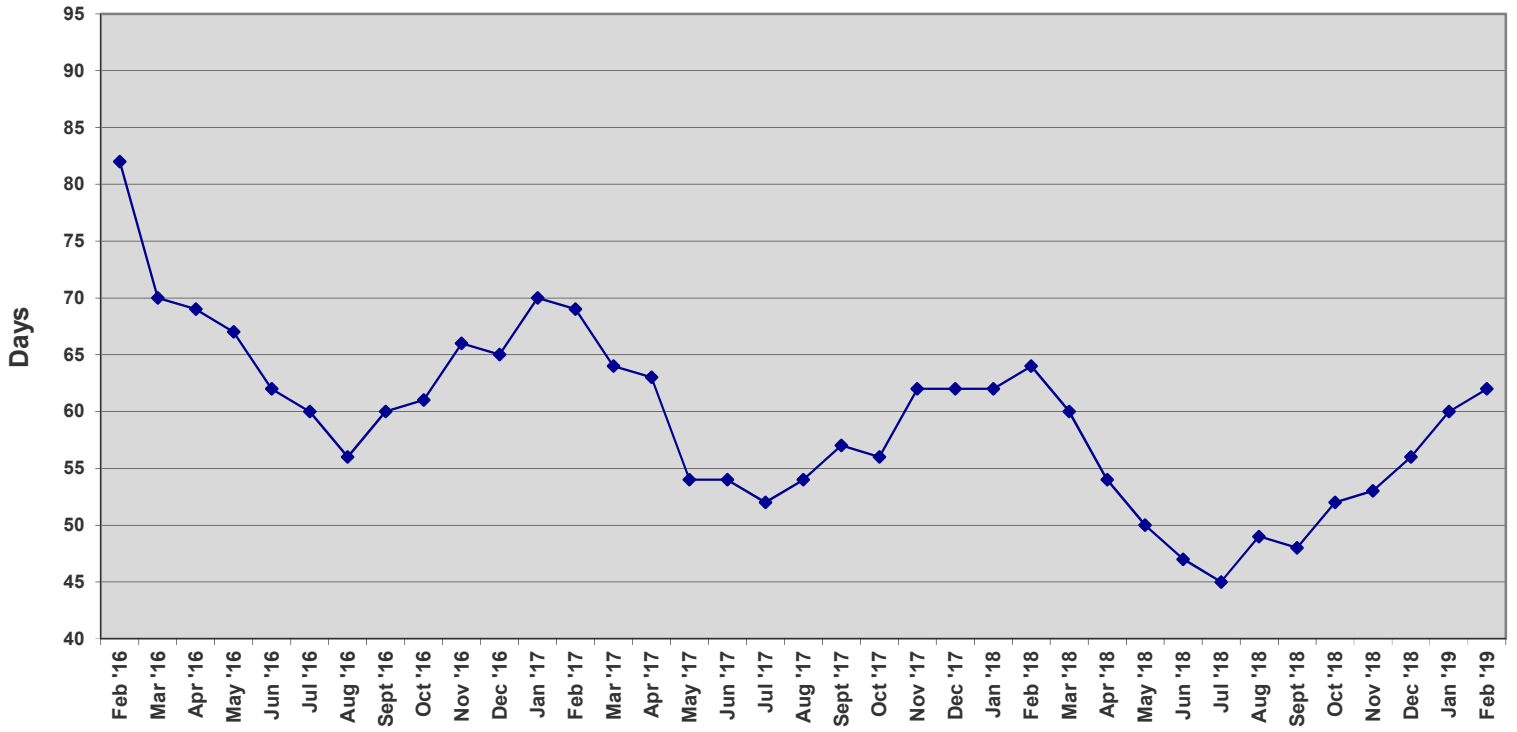


### Total Contracts vs New Contracts vs Sales





### Average Days on Market - Listing to Contract



### Average Days - Contract to Close

