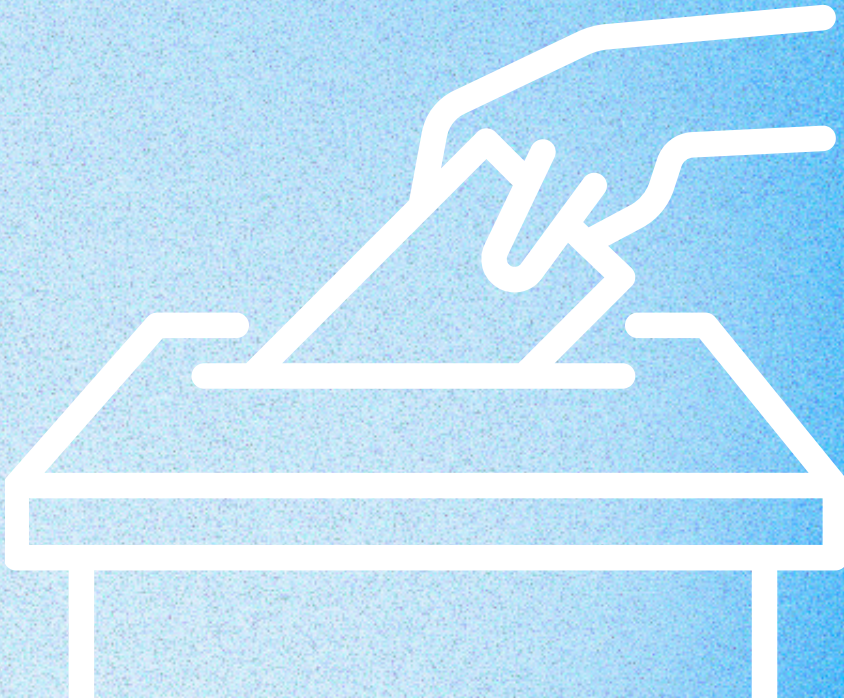




ORLANDO REGIONAL
REALTOR[®]
ASSOCIATION

20
26



ORRA VOTES

Your **Voice**. Your **Vote**. Your **Industry**.

A member resource for the 2026 election cycle — helping REALTORS[®] check in, plan ahead, and show up for the issues that matter most.



ORRA Votes 2026

Your Voice. Your Vote. Your Industry.

Every election shapes the future of our communities – and the real estate industry has a stake in that future.

Through ORRA Votes 2026, the Orlando Regional REALTOR[®] Association is encouraging every eligible member to be informed, prepared, and engaged throughout the 2026 election cycle. Local, county, state, and federal races can impact housing, private property rights, infrastructure, transportation, taxes, insurance, permitting, economic development, and the future of Central Florida’s real estate market.

This guide is designed to help members check their voter registration, understand key deadlines, find official election resources, make a voting plan, and learn more about candidates supported through ORRA’s advocacy process.

Why REALTOR[®] Votes Matter

REALTOR [®] Priority	Why It Matters
Housing affordability and supply	Impacts buyers, sellers, renters, and long-term market health
Private property rights	Protects ownership, use, transfer, and investment in real property
Infrastructure and transportation	Supports growth, mobility, and access to opportunity
Permitting and regulatory efficiency	Affects project timelines, housing costs, and development capacity
Taxes, fees, and assessments	Impacts affordability, ownership costs, and business conditions
Economic development	Strengthens communities and supports residential and commercial real estate
Insurance and resiliency	Impacts property costs, risk, and market stability



Start Here

Your 2026 Voting Checklist

Before each election, ORRA members are encouraged to complete the following steps:



ACTION

1



Check your voter registration status

2



Confirm your residential and mailing address

3



Review your party affiliation before the Primary Election

4



Request or renew your vote-by-mail ballot, if desired

5



Review your sample ballot when available

6



Confirm your early voting site or Election Day polling location

7



Bring valid photo and signature identification if voting in person

8



Vote early, vote by mail, or vote on Election Day

ORRA-Endorsed Candidates

REALTOR[®] Champions for 2026

As part of ORRA's advocacy mission, ORRA endorses candidates who understand the issues REALTORS[®] face every day and who recognize the importance of a strong housing market, private property rights, and a healthy business environment in Central Florida.

Endorsements are made through ORRA's advocacy review process, which may include candidate questionnaires, interviews, review of public service experience, voting records where applicable, and evaluation of each candidate's alignment with REALTOR[®] priorities. These priorities include private property rights, housing opportunity, responsible growth, infrastructure, economic development, and policies that support a strong real estate industry.

ORRA's endorsed candidates have demonstrated a commitment to issues that matter to REALTORS[®], property owners, homebuyers, businesses, and communities across Central Florida. Members are encouraged to review their sample ballot, learn about the candidates and issues in their jurisdiction, and make an informed voting plan.

2026 ORRA-Endorsed Candidates

Orange County Commissioner



Mike Scott

District 6

[Campaign Website](#)



Deidre Graybill

District 7

[Campaign Website](#)

Seminole County Commissioners



Jay Zembower

District 2

[Campaign Website](#)



Amy Lockhart

District 4

[Campaign Website](#)

Seminole County School Board



Kristine Kraus

District 1

[Campaign Website](#)



Autumn Garick

District 5

[Campaign Website](#)



2026 Election Deadlines

2026 Primary Election Timeline

2026 General Election Timeline

Date	Deadline/Action
Monday, July 20, 2026	Deadline to register to vote or change party affiliation for the Primary Election
Thursday, August 6, 2026 by 5:00 p.m.	Deadline to register to vote or change party affiliation for the Primary Election
Saturday, August 8 - Saturday, August 15, 2026	Statewide mandatory early voting period
Tuesday, August 18, 2026	Primary Election Day: polls open 7:00 a.m.-7:00 p.m.
Tuesday, August 18, 2026 by 7:00 p.m.	Deadline for completed vote-by-mail ballots to be received by the Supervisor of Elections office

Date	Deadline/Action
Monday, October 5, 2026	Deadline to register to vote for the General Election
Thursday, October 22, 2026, by 5:00 p.m.	Deadline to request that a vote-by-mail ballot be mailed
Saturday, October 24 - Saturday, October 31, 2026	Statewide mandatory early voting period
Tuesday, November 3, 2026	General Election Day: polls open 7:00 a.m.-7:00 p.m.
Tuesday, November 3, 2026, by 7:00 p.m.	Deadline for completed vote-by-mail ballots to be received by the Supervisor of Elections office

* Counties may offer additional early voting days, so confirm your county's schedule before making your voting plan.

Orange County Voter Information



 Website: <https://www.voteorangefl.gov>



The Orange County Supervisor of Elections website allows voters to register, update registration, check voter information, request a vote-by-mail ballot, track a mail ballot, find a polling place, review what is on the ballot, access sample ballots, learn about accessibility and language resources, and find information about becoming a poll worker.

Orange County
2026 Primary Election Timeline

Date	Deadline/Action
Monday, July 20, 2026	Deadline to register to vote or change party affiliation
Thursday, August 6, 2026 by 5:00 p.m.	Deadline to request a vote-by-mail ballot
Monday, August 3 - Sunday, August 16, 2026	Orange County early voting, 9:00 a.m. - 7:00 p.m.
Tuesday, August 18, 2026	Primary Election Day
Tuesday, August 18, 2026 by 7:00 p.m.	Deadline for completed vote-by-mail ballots to be received by the Supervisor of Elections office

Orange County
2026 General Election Timeline

Date	Deadline/Action
Monday, October 5, 2026	Deadline to register to vote
Thursday, October 22, 2026, by 5:00 p.m.	Deadline to request a vote-by-mail ballot
Monday, October 19 - Sunday, November 1, 2026	Orange County early voting, 8:00 a.m.–8:00 p.m.
Tuesday, November 3, 2026	General Election Day
Tuesday, November 3, 2026, by 7:00 p.m.	Deadline for completed vote-by-mail ballots to be received by the Supervisor of Elections office



Orange County early voting dates, times, and locations should be confirmed directly with the Orange County Supervisor of Elections before publication and again before each election.



Orange County Supervisor of Elections
Supervisor: Karen Castor Dentel
Website: <https://www.voteorangefl.gov>

Office Address: 119 W. Kaley Street, Orlando, FL 32806
Phone: 407-836-2070
Vote-by-Mail Phone: 407-836-8683

Seminole County Voter Information



 Website: <https://www.voteseminole.gov>



The Seminole County Supervisor of Elections website includes voter registration tools, voter record lookup, polling location information, vote-by-mail information, early voting information, candidate information, election worker information, voter guide resources, accessibility information, and election updates.

Seminole County
2026 Primary Election Timeline

Date	Deadline/Action
Monday, July 20, 2026	Deadline to register to vote or change party affiliation
Thursday, August 6, 2026 by 5:00 p.m.	Deadline to request a vote-by-mail ballot
Saturday, August 8 – Saturday August 15, 2026	Orange County early voting, 10:00 a.m. - 6:00 p.m.
Tuesday, August 18, 2026	Primary Election Day
Tuesday, August 18, 2026 by 7:00 p.m.	Deadline for completed vote-by-mail ballots to be received by the Supervisor of Elections office

Seminole County
2026 General Election Timeline

Date	Deadline/Action
Monday, October 5, 2026	Deadline to register to vote
Thursday, October 22, 2026, by 5:00 p.m.	Deadline to request a vote-by-mail ballot
Monday, October 19 – Sunday, November 1, 2026	Seminole County early voting, 7:00 a.m.-7:00 p.m.
Tuesday, November 3, 2026	General Election Day
Tuesday, November 3, 2026, by 7:00 p.m.	Deadline for completed vote-by-mail ballots to be received by the Supervisor of Elections office



Seminole County early voting dates, times, and locations should be confirmed directly with the Seminole County Supervisor of Elections before publication and again before each election.



Seminole County Supervisor of Elections
Supervisor: Amy Pennock
Website: <https://www.voteseminole.gov>

Office Address: 1500 E. Airport Blvd., Sanford, FL 32773
Phone: 407-585-8683



Make your Voting Plan

Choose the voting option that works best for your schedule, then confirm your details before you cast your ballot.

Option 01

Vote by Mail

What to know

Vote-by-mail is available to eligible registered voters in Florida. A voter, immediate family member, legal guardian, or designee for a voter with a disability may request a vote-by-mail ballot.

KEY DETAIL

The request deadline is no later than 5:00 p.m. on the 12th day before the election. A completed vote-by-mail ballot must be received by the Supervisor of Elections office by 7:00 p.m. local time on Election Day, regardless of postmark.

ORRA Votes Tip

Do not wait until Election Day to return a mail ballot. If voting by mail, request early, return early, and track your ballot through your county Supervisor of Elections.

Option 02

Vote Early

What to know

Early voting allows registered voters to vote in person before Election Day. Each county may offer its own dates, times, and locations beyond the statewide mandatory early voting period.

KEY DETAIL

Best for flexibility if Election Day gets crowded, complicated or busy.

ORRA Votes Tip

Early voting may be the most flexible option for busy REALTORS® who may have client meetings, showings, closings, or travel on Election Day.

Option 03

Election Day

What to know

On Election Day, voters must vote at their assigned polling location. Polls are open from 7:00 a.m. to 7:00 p.m. local time.

KEY DETAIL

Voters who are in line by 7:00 p.m. are allowed to vote.

ORRA Votes Tip

Polling locations can change. Confirm your assigned polling place before Election Day.



First-Time Voter Information



Start early, check your details, and make a plan before Election Day.

First-Time Voter Checklist

A simple step-by-step path to help new voters feel ready and confident.

- 1 Register to vote before the deadline
- 2 Confirm your voter registration status
- 3 Make sure your name, address, party affiliation, and signature are current
- 4 Decide whether to vote by mail, vote early, or vote on Election Day
- 5 Review your sample ballot when available
- 6 Bring current and valid photo and signature identification if voting in person
- 7 Ask a poll worker for help if you need assistance

Additional Nearby County Election Resources

For members who live outside Orange or Seminole County, confirm voting information directly with your Supervisor of Elections.

Osceola County: voteosceola.gov

Lake County: lakevotes.gov

Osceola County: volusciaelections.gov

How to Register or Update Your Voter Information

Florida voters may register to vote or update voter information online through Florida's official voter registration system. Members may also register or update voter information through their county Supervisor of Elections office.

[Click here to update your voter information](#)

Members should update their voter information when they:

Situation

Why it Matters

- Move to a new address Determines the correct precinct and ballot
- Change their name Helps ensure voter records match identification
- Want to update party affiliation Important before the Primary Election
- Need to update mailing address Important for election notices and vote-by-mail
- Need to update signature Used for vote-by-mail and ballot verification

Official Voter Registration Resources

Florida Division of Elections:

Orange County Supervisor of Elections:

Seminole County Supervisor of Elections:

Find your Polling location

Orange County Polling Place Lookup

Seminole County Polling Place Lookup





Accessibility and Voting Assistance



Voting should be accessible to every eligible voter. Members who need assistance should contact their county Supervisor of Elections before Election Day whenever possible.

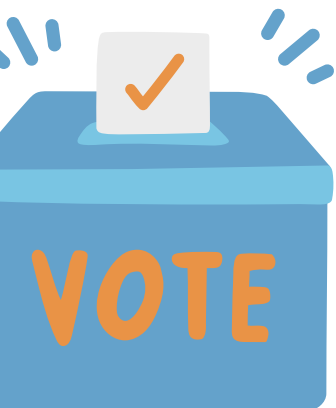
Assistance may be available for voters who:

Need	Available Support
Have a disability	Accessible voting equipment and polling place assistance
Need help reading or marking a ballot	Voter assistance at the polling place
Need language access	County-specific language resources where available
Are military or overseas voters	Special voter resources and ballot options
Need to understand voting rights	Voter guide, rights, and responsibilities resources



ORRA Votes Tip

Do not wait until Election Day to ask questions about accessibility, language access, or voter assistance. Contact your county Supervisor of Elections early so you know what options are available.



Become a Poll Worker or Election Worker

Serving as a poll worker or election worker is a direct way to support secure, accessible, and efficient elections.

Orange County

[Learn More](#)



Orange County provides information on becoming a poll worker and participating in Adopt-A-Precinct through its Supervisor of Elections website.

Seminole County

[Learn More](#)



Seminole County election workers help voters navigate the voting process, assist at polling locations, and support election operations.



ORLANDO REGIONAL
REALTOR[®]
ASSOCIATION



ORRA VOTES

Your **Voice**. Your **Vote**. Your **Industry**.

Your vote is one of the most important ways to help shape the future of Central Florida. As REALTORS[®], ORRA members understand the connection between strong communities, informed civic participation, and sound public policy.

Before you VOTE

- Check your registration.
- Confirm your polling place.
- Know your deadlines.
- Make your voting plan.
- Review your sample ballot.
- VOTE**

Make Your **Voting Plan**

I will vote by: Mail Early Voting Election Day

My voting date: _____

My polling or early voting location: _____

My sample ballot reviewed: Yes Not yet

Disclaimer

This guide is provided as a member education resource as part of ORRA Votes 2026, ORRA's Get Out the Vote campaign. Election dates, deadlines, polling locations, voting procedures, candidate information, and ballot details are subject to change. Members should confirm all voting information directly with the Florida Division of Elections or their county Supervisor of Elections.

Candidate endorsements reflect ORRA's advocacy process and priorities related to the real estate industry, private property rights, housing, economic development, and community growth.